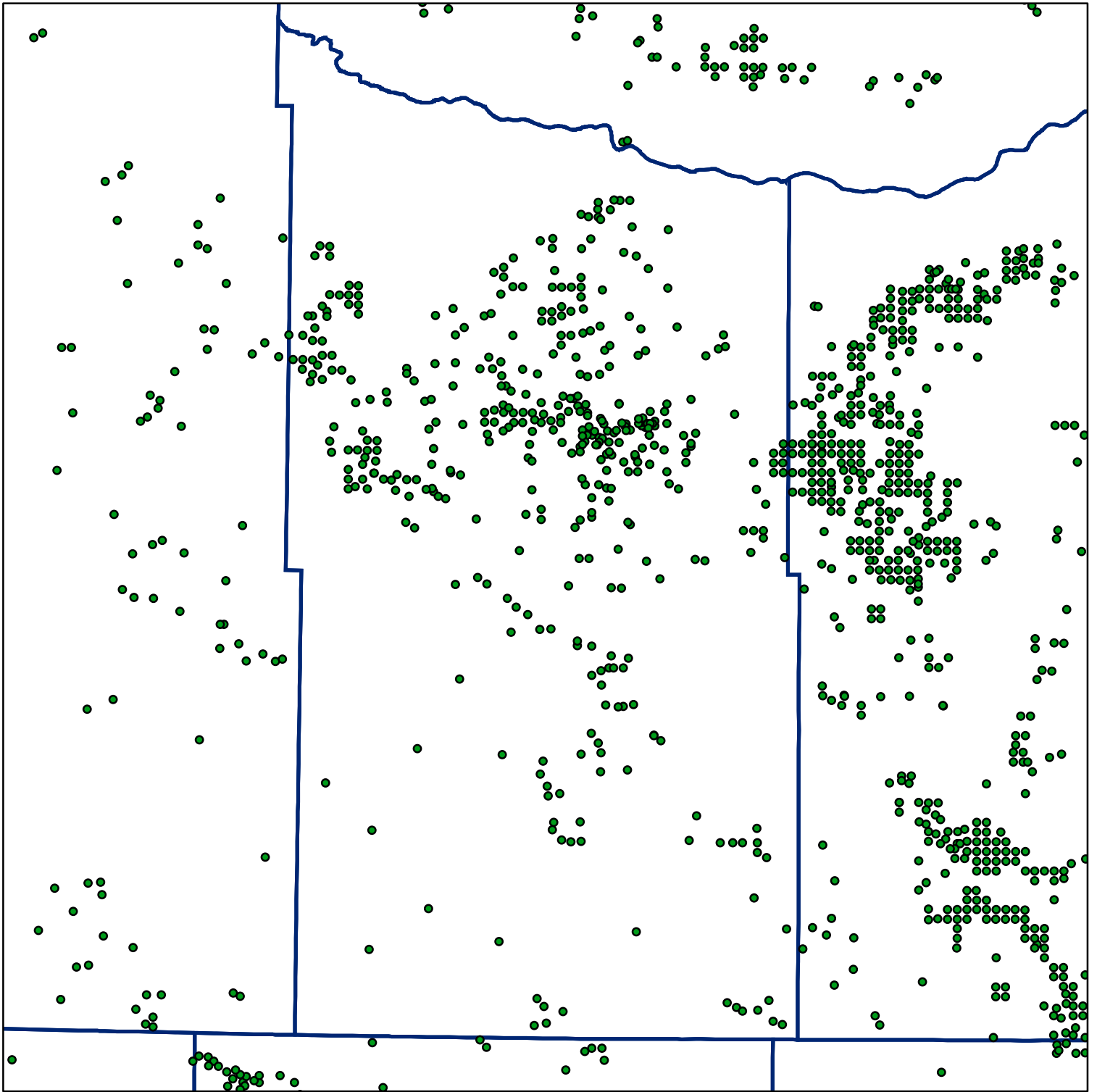


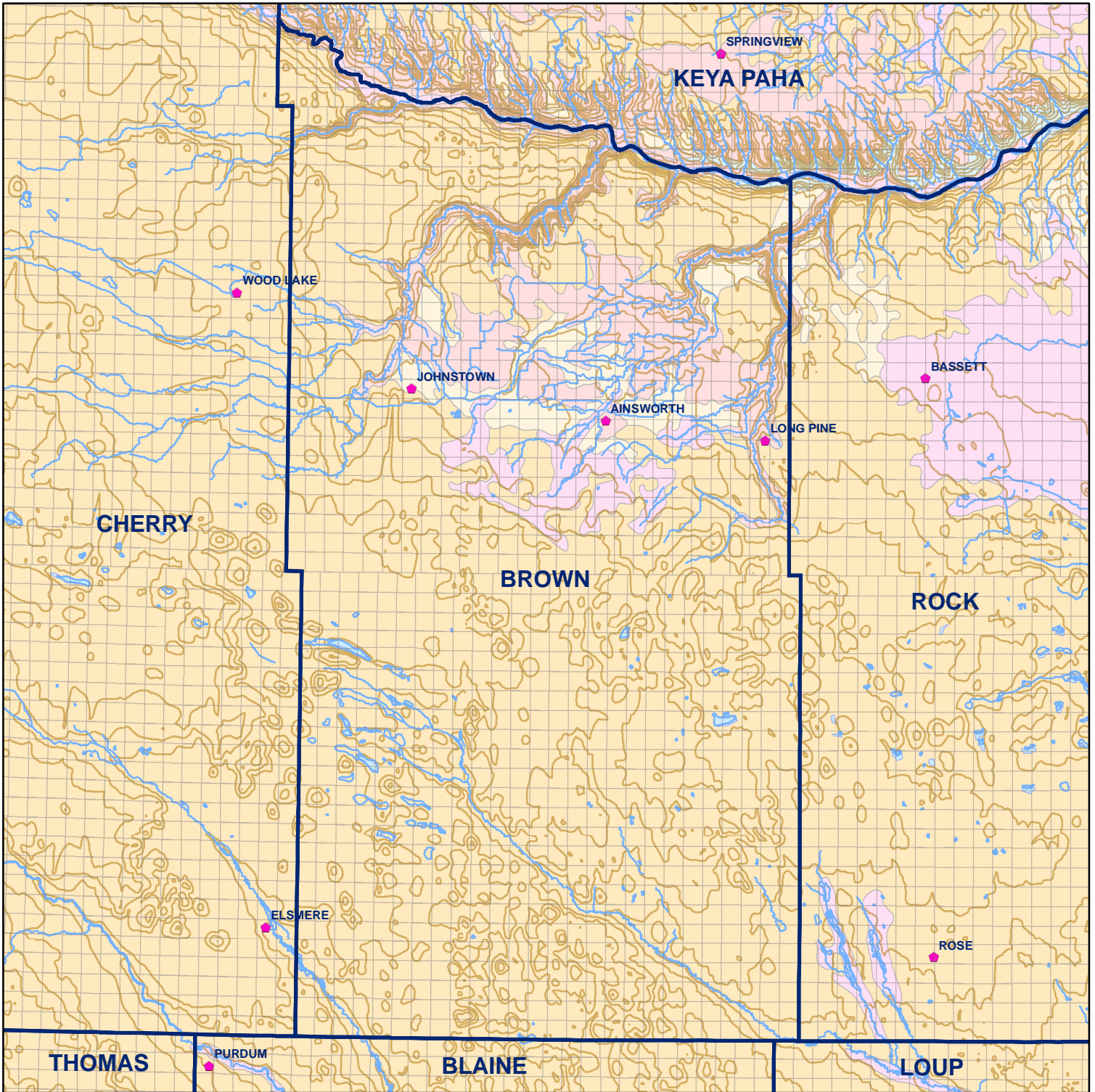
 Market Areas



● Registered Wells > 500 GPM

255	253	251	249	247	245	243	241	239	237
377	379	381	383	385	387	389	391	393	395
509	507	505	503	501	499	497	495	493	491
631	633	635	637	639	641	643	645	647	649
773	771	769	767	765	763	761	759	757	755
897	899	901	903	905	907	909	911	913	915
1047	1045	1043	1041	1039	1037	1035	1033	1031	1029
1173	1175	1177	1179	1181	1183	1185	1187	1189	1191
1323	1321	1319	1317	1315	1313	1311	1309	1307	1305
1449	1451	1453	1455	1457	1459	1461	1463	1465	1467

Geo Codes



Brown County

Legend

Towns

Sections

Rivers and Streams

Topography

Soil Classes

Lakes and Ponds

Excessively drained sandy soils formed in alluvium in valleys and eolian sand on uplands in sandhills

Excessively drained sandy soils formed in eolian sands on uplands in sandhills

Moderately well drained silty soils on uplands and in depressions formed in loess

Well drained silty soils formed in loess on uplands

Well drained silty soils formed in loess and alluvium on stream terraces

Well to somewhat excessively drained loamy soils formed in weathered sandstone and eolian material on uplands

Somewhat poorly drained soils formed in alluvium on bottom lands

Moderately well drained silty soils with clayey subsoils on uplands