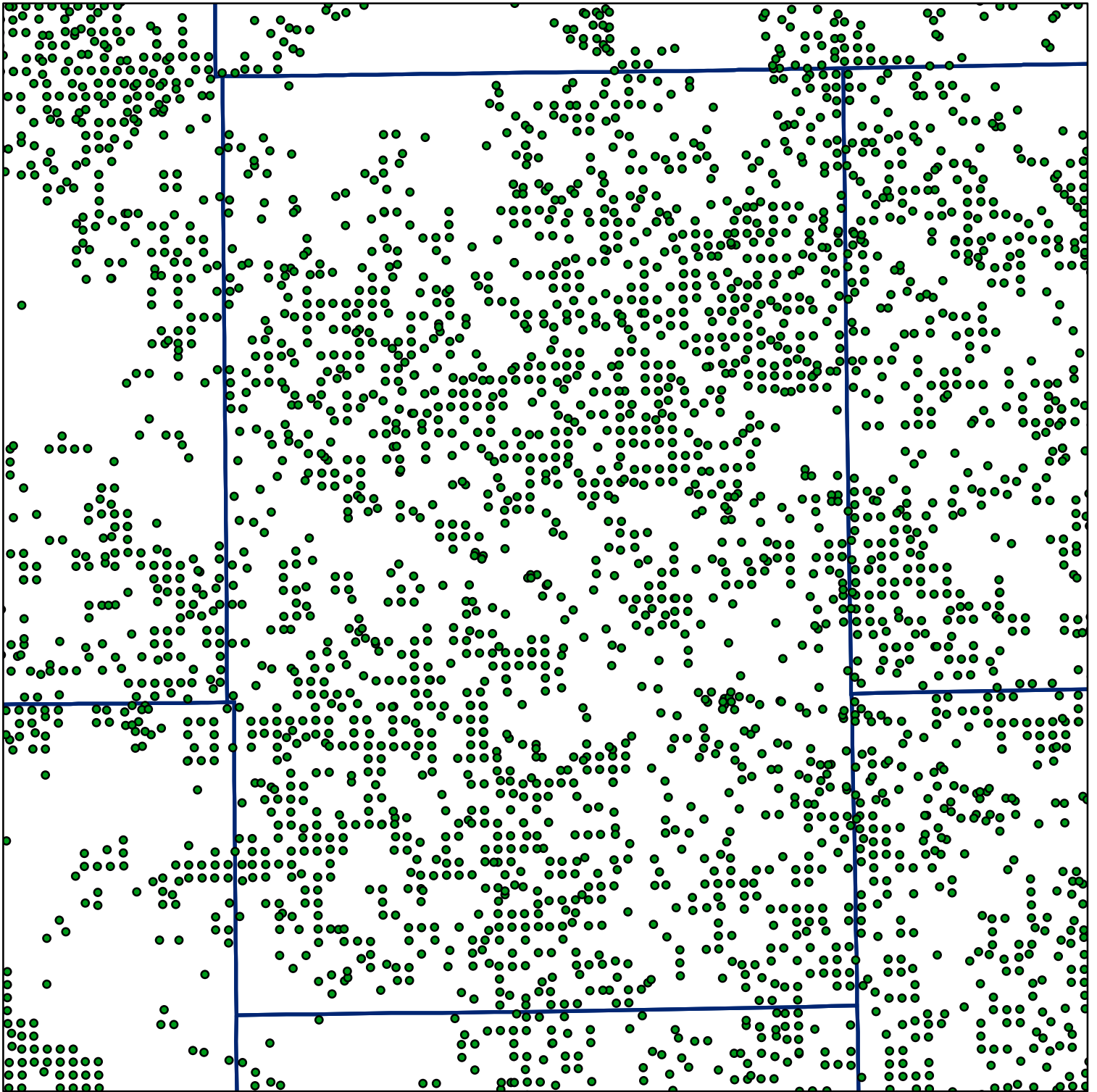
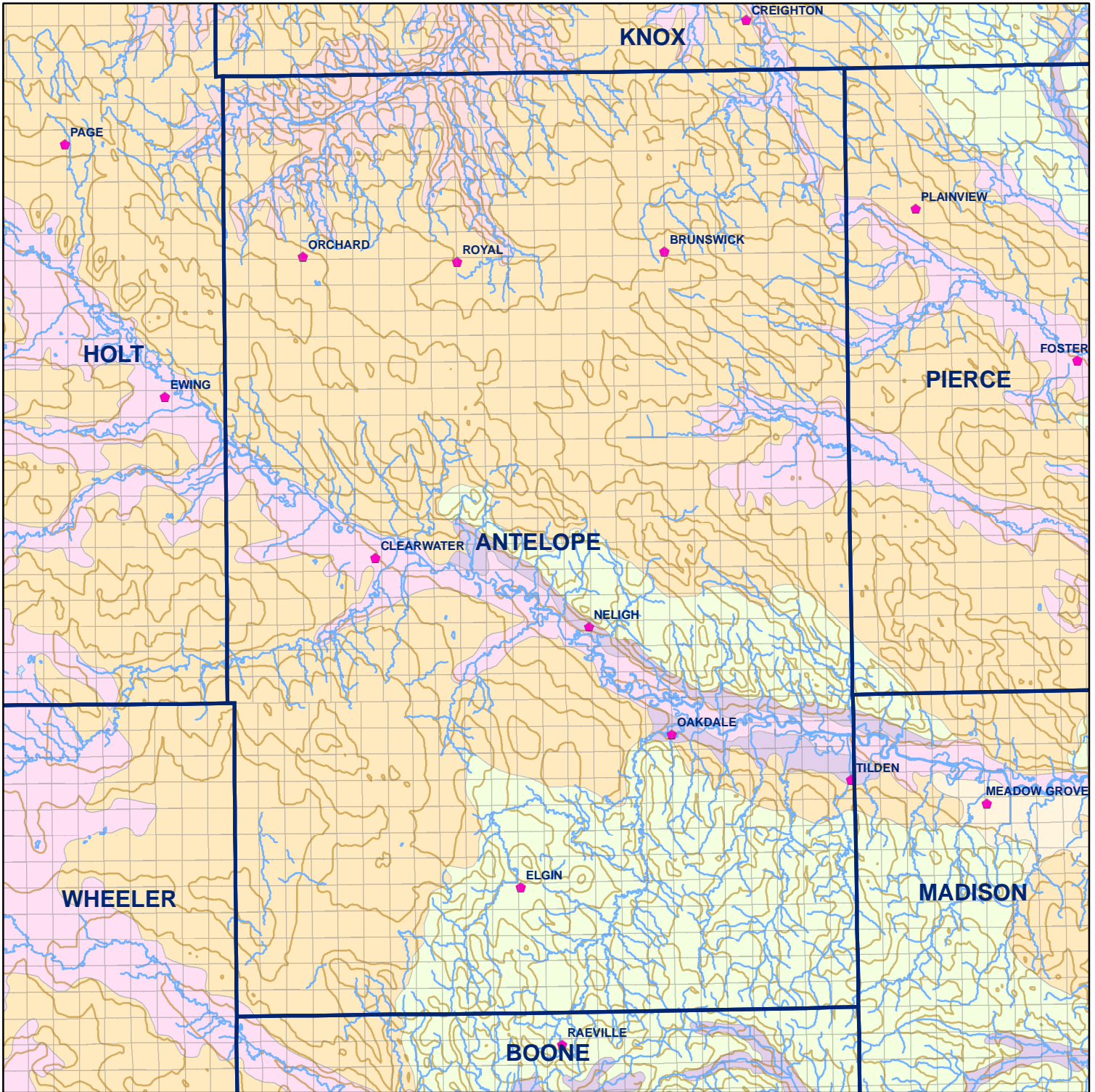


Market Areas



● Registered Wells > 500 GPM

739	737	735	733	731	729	727	725
931	933	935	937	939	941	943	945
1013	1011	1009	1007	1005	1003	1001	999
1207	1209	1211	1213	1215	1217	1219	1221
1289	1287	1285	1283	1281	1279	1277	1275
1483	1485	1487	1489	1491	1493	1495	1497
1569	1567	1565	1563	1561	1559	1557	1555
1763	1765	1767	1769	1771	1773	1775	1777



Antelope County

Legend

Towns

Sections

Rivers and Streams

Topography

Soil Classes

Lakes and Ponds

Excessively drained sandy soils formed in alluvium in valleys and eolian sand on uplands in sandhills

Excessively drained sandy soils formed in eolian sands on uplands in sandhills

Moderately well drained silty soils on uplands and in depressions formed in loess

Well drained silty soils formed in loess on uplands

Well drained silty soils formed in loess and alluvium on stream terraces

Well to somewhat excessively drained loamy soils formed in weathered sandstone and eolian material on uplands

Somewhat poorly drained soils formed in alluvium on bottom lands

Moderately well drained silty soils with clayey subsoils on uplands