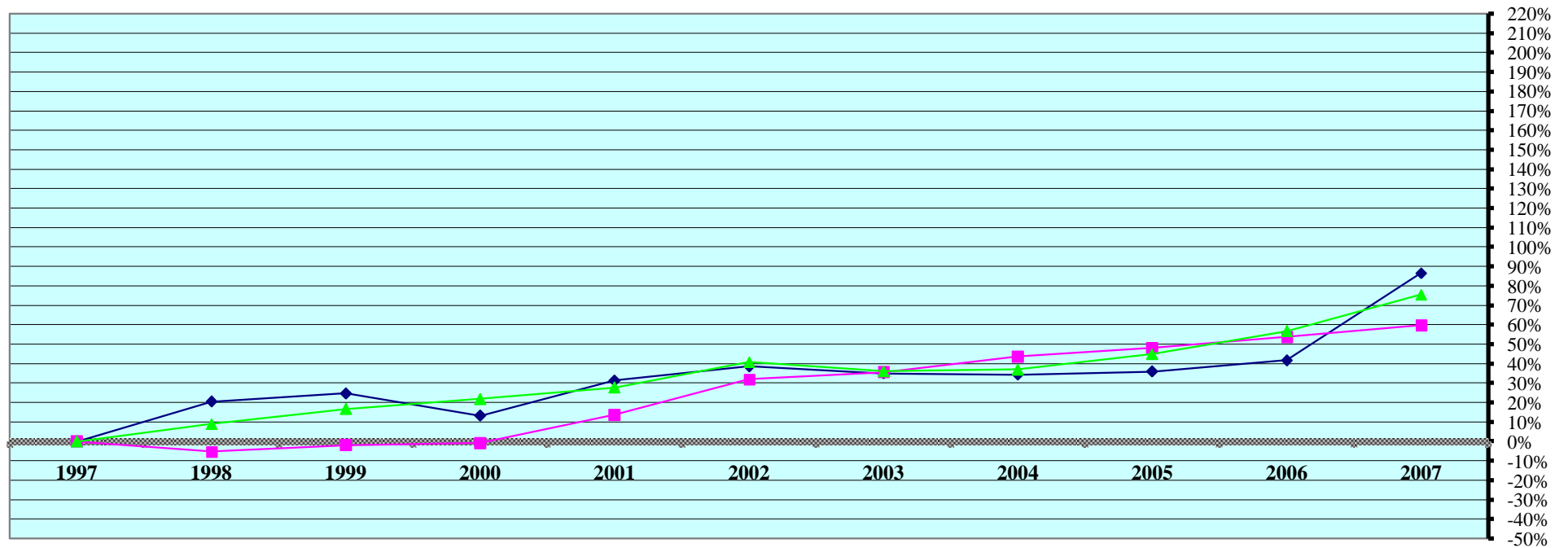


### REAL PROPERTY VALUATIONS - Cumulative %Change 1997-2007



Tax Year	Residential & Recreational <sup>(1)</sup>				Commercial & Industrial <sup>(1)</sup>				Total Agricultural Land <sup>(1)</sup>			
	Value	Amnt Value Chg	Ann.%chg	Cmltv%chg	Value	Amnt Value Chg	Ann.%chg	Cmltv%chg	Value	Amnt Value Chg	Ann.%chg	Cmltv%chg
1997	29,634,530	--	--	--	11,650,010	--	--	--	124,727,645	--	--	--
1998	35,715,440	6,080,910	20.52%	20.52%	11,046,945	-603,065	-5.18%	-5.18%	136,059,640	11,331,995	9.09%	9.09%
1999	36,954,370	1,238,930	3.47%	24.70%	11,442,170	395,225	3.58%	-1.78%	145,627,865	9,568,225	7.03%	16.76%
2000	33,550,755	-3,403,615	-9.21%	13.22%	11,553,685	111,515	0.97%	-0.83%	152,041,495	6,413,630	4.40%	21.90%
2001	38,924,815	5,374,060	16.02%	31.35%	13,245,935	1,692,250	14.65%	13.70%	159,318,660	7,277,165	4.79%	27.73%
2002	41,074,835	2,150,020	5.52%	38.60%	15,380,075	2,134,140	16.11%	32.02%	175,653,085	16,334,425	10.25%	40.83%
2003	40,008,870	-1,065,965	-2.60%	35.01%	15,804,075	424,000	2.76%	35.66%	169,798,225	-5,854,860	-3.33%	36.14%
2004	39,816,930	-191,940	-0.48%	34.36%	16,733,590	929,515	5.88%	43.64%	170,908,105	1,109,880	0.65%	37.03%
2005	40,269,865	452,935	1.14%	35.89%	17,248,705	515,115	3.08%	48.06%	180,872,560	9,964,455	5.83%	45.01%
2006	42,008,950	1,739,085	4.32%	41.76%	17,906,950	658,245	3.82%	53.71%	195,513,075	14,640,515	8.09%	56.75%
2007	55,291,665	13,282,715	31.62%	86.58%	18,606,710	699,760	3.91%	59.71%	218,901,920	23,388,845	11.96%	75.50%

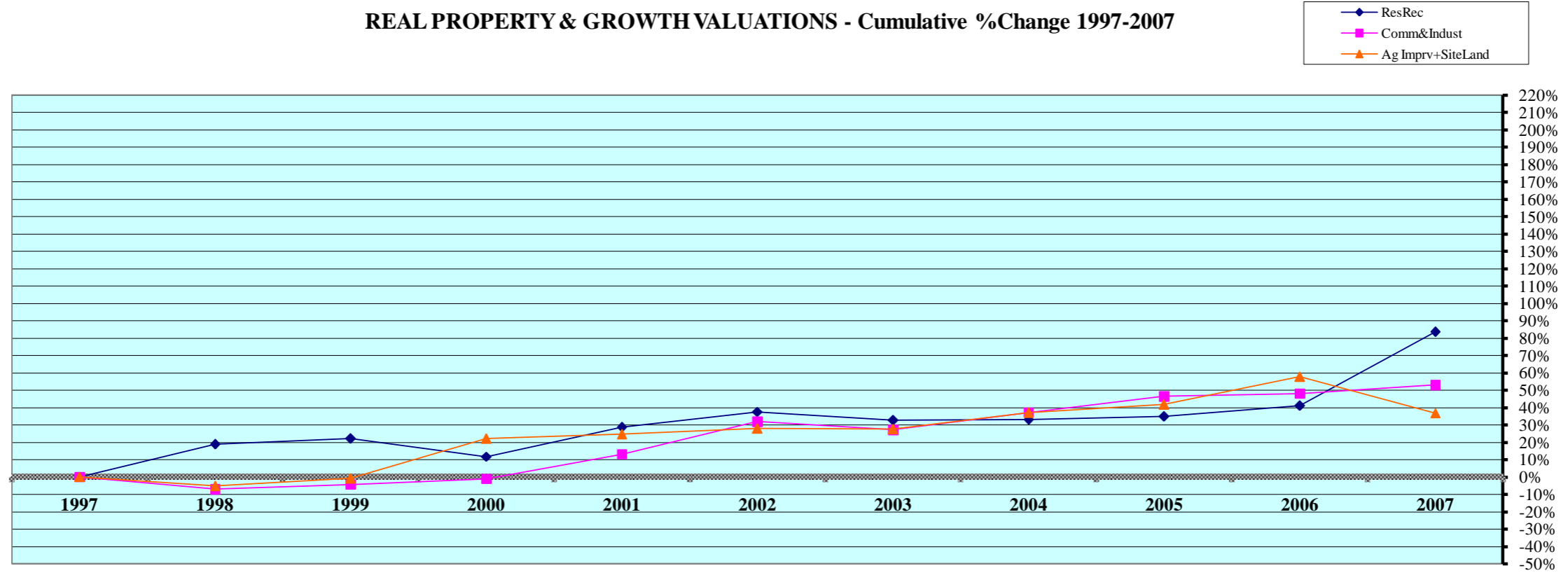
Rate Ann. %chg: Resid & Rec. **6.44%**      Comm & Indust **4.79%**      Agric. Land **5.79%**

Cnty# **91**  
County **WEBSTER**

FL area **7**

(1) Resid. & Recreat. excludes agdwll & farm homesite land; Comm. & Indust. excludes minerals; Agland includes irrigated, dry, grass, waste, & other agland, excludes farmsite land.  
Source: 1997 - 2007 Certificate of Taxes Levied Reports CTL      NE Dept. of Revenue Property Assessment Division      Prepared as of 03/01/2008

REAL PROPERTY & GROWTH VALUATIONS - Cumulative %Change 1997-2007



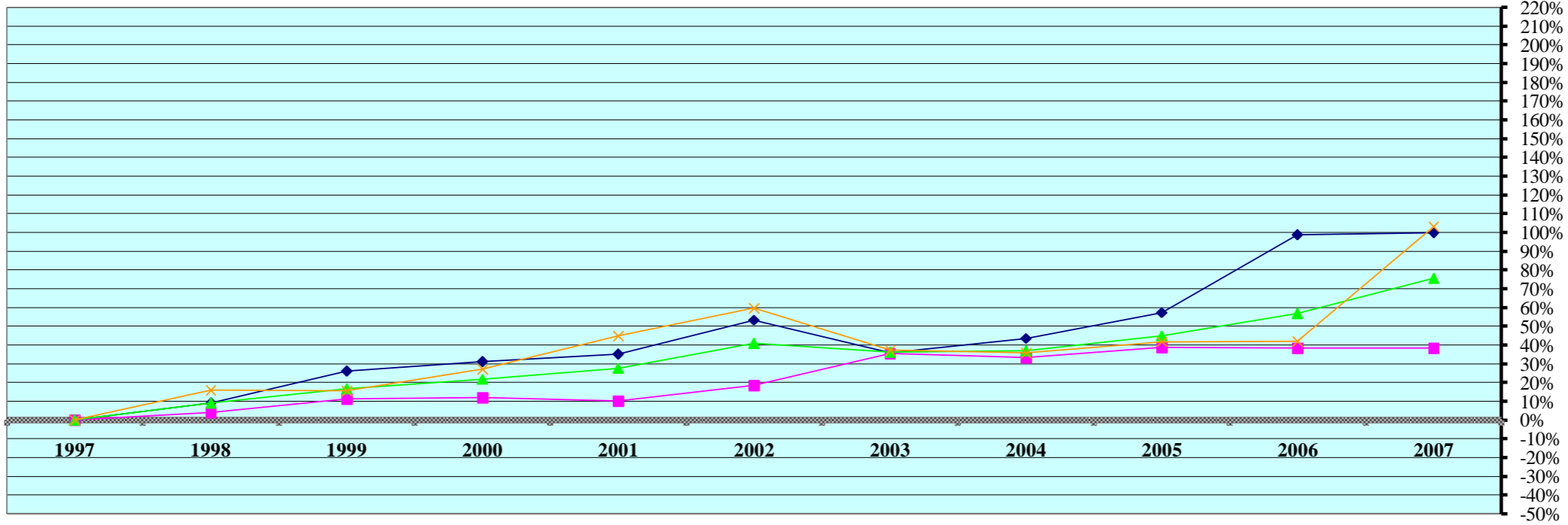
Tax Year	Residential & Recreational <sup>(1)</sup>						Commercial & Industrial <sup>(1)</sup>					
	Value	Growth Value	% growth of value	Value Exclud. Growth	Ann.%chg w/o grwth	Cmltv%chg w/o grwth	Value	Growth Value	% growth of value	Value Exclud. Growth	Ann.%chg w/o grwth	Cmltv%chg w/o grwth
1997	29,634,530	130,387	0.44%	29,504,143	--	--	11,650,010	2,840	0.02%	11,647,170	--	--
1998	35,715,440	553,953	1.55%	35,161,487	18.65%	18.65%	11,046,945	214,980	1.95%	10,831,965	-7.02%	-7.02%
1999	36,954,370	758,635	2.05%	36,195,735	1.34%	22.14%	11,442,170	303,060	2.65%	11,139,110	0.83%	-4.39%
2000	33,550,755	467,400	1.39%	33,083,355	-10.48%	11.64%	11,553,685	28,795	0.25%	11,524,890	0.72%	-1.07%
2001	38,924,815	794,395	2.04%	38,130,420	13.65%	28.67%	13,245,935	68,890	0.52%	13,177,045	14.05%	13.11%
2002	41,074,835	331,950	0.81%	40,742,885	4.67%	37.48%	15,380,075	31,280	0.20%	15,348,795	15.88%	31.75%
2003	40,008,870	680,840	1.70%	39,328,030	-4.25%	32.71%	15,804,075	977,090	6.18%	14,826,985	-3.60%	27.27%
2004	39,816,930	388,840	0.98%	39,428,090	-1.45%	33.05%	16,733,590	759,160	4.54%	15,974,430	1.08%	37.12%
2005	40,269,865	298,635	0.74%	39,971,230	0.39%	34.88%	17,248,705	176,830	1.03%	17,071,875	2.02%	46.54%
2006	42,008,950	201,515	0.48%	41,807,435	3.82%	41.08%	17,906,950	651,850	3.64%	17,255,100	0.04%	48.11%
2007	55,291,665	887,649	1.61%	54,404,016	29.51%	83.58%	18,606,710	772,595	4.15%	17,834,115	-0.41%	53.08%
Rate Ann%chg	6.44%		Resid & Rec. w/o growth			5.58%	4.79%		C & I w/o growth			2.36%

Tax Year	Ag Improvements & Site Land <sup>(1)</sup>							
	Agdwell & Homesite Value	Agoutbldg & Farmsite Value	Ag Imprv+Site Total Value	Growth Value	% growth of value	Value Exclud. Growth	Ann.%chg w/o grwth	Cmltv%chg w/o grwth
1997	17,599,325	6,303,095	23,902,420	324,898	1.36%	23,577,522	--	--
1998	17,629,995	5,213,155	22,843,150	167,305	0.73%	22,675,845	-5.13%	-5.13%
1999	19,862,290	5,304,245	25,166,535	1,467,130	5.83%	23,699,405	3.75%	-0.85%
2000	24,005,290	5,520,425	29,525,715	365,785	1.24%	29,159,930	15.87%	22.00%
2001	25,315,715	5,034,655	30,350,370	551,777	1.82%	29,798,593	0.92%	24.67%
2002	25,484,180	5,106,050	30,590,230	42,805	0.14%	30,547,425	0.65%	27.80%
2003	26,158,500	5,033,300	31,191,800	707,015	2.27%	30,484,785	-0.34%	27.54%
2004	26,516,075	6,492,275	33,008,350	261,935	0.79%	32,746,415	4.98%	37.00%
2005	28,028,870	6,573,145	34,602,015	726,065	2.10%	33,875,950	2.63%	41.73%
2006	32,019,205	6,644,245	38,663,450	965,200	2.50%	37,698,250	8.95%	57.72%
2007	25,986,935	7,268,970	33,255,905	557,187	1.68%	32,698,718	-15.43%	36.80%
Rate Ann%chg	3.97%	1.44%	3.36%	Ag Imprv+Site w/o growth		1.68%		

(1) Resid. & Recreat. excludes agdwell & farm homesite land; Comm. & Indust. excludes minerals; Agland includes irrigated, dry, grass, waste & other agland, excludes farmsite land. Real Prop Growth = value attributable to new construction, additions to existing buildings, and any improvements for real property which increase the value of such property.

Sources:  
Value; 1997 - 2007 CTL  
Growth Value; 1997-2007 Abstract of Asmnt Rpt.  
NE Dept. of Revenue Property Assessment Division  
Prepared as of 03/01/2008

**AGRICULTURAL LAND VALUATIONS - Cumulative %Change 1997-2007**



Tax Year	Irrigated Land				Dryland				Grassland			
	Value	Value Chg	Ann%chg	Cmltv%chg	Value	Value Chg	Ann%chg	Cmltv%chg	Value	Value Chg	Ann%chg	Cmltv%chg
1997	35,333,750	--	--	--	51,366,455	--	--	--	37,780,670	--	--	--
1998	38,536,260	3,202,510	9.06%	9.06%	53,484,890	2,118,435	4.12%	4.12%	43,816,605	6,035,935	15.98%	15.98%
1999	44,530,975	5,994,715	15.56%	26.03%	57,176,150	3,691,260	6.90%	11.31%	43,620,190	-196,415	-0.45%	15.46%
2000	46,292,220	1,761,245	3.96%	31.01%	57,443,415	267,265	0.47%	11.83%	48,034,855	4,414,665	10.12%	27.14%
2001	47,747,015	1,454,795	3.14%	35.13%	56,516,235	-927,180	-1.61%	10.03%	54,781,825	6,746,970	14.05%	45.00%
2002	54,199,355	6,452,340	13.51%	53.39%	60,812,860	4,296,625	7.60%	18.39%	60,367,670	5,585,845	10.20%	59.78%
2003	47,976,815	-6,222,540	-11.48%	35.78%	69,638,965	8,826,105	14.51%	35.57%	51,908,610	-8,459,060	-14.01%	37.39%
2004	50,743,970	2,767,155	5.77%	43.61%	68,522,410	-1,116,555	-1.60%	33.40%	51,365,695	-542,915	-1.05%	35.96%
2005	55,598,175	4,854,205	9.57%	57.35%	71,227,065	2,704,655	3.95%	38.66%	53,574,125	2,208,430	4.30%	41.80%
2006	70,249,795	14,651,620	26.35%	98.82%	71,105,150	-121,915	-0.17%	38.43%	53,676,465	102,340	0.19%	42.07%
2007	70,570,660	320,865	0.46%	99.73%	71,065,110	-40,040	-0.06%	38.35%	76,783,820	23,107,355	43.05%	103.24%

Rate Ann.%chg: Irrigated **7.16%** Dryland **3.30%** Grassland **7.35%**

Tax Year	Waste Land <sup>(1)</sup>				Other Agland <sup>(1)</sup>				Total Agricultural			
	Value	Value Chg	Ann%chg	Cmltv%chg	Value	Value Chg	Ann%chg	Cmltv%chg	Value	Value Chg	Ann%chg	Cmltv%chg
1997		--	--	--	246,770	--	--	--	124,727,645	--	--	--
1998		--	--	--	221,885	-24,885	-10.08%	-10.08%	136,059,640	11,331,995	9.09%	9.09%
1999		--	--	--	300,550	78,665	35.45%	21.79%	145,627,865	9,568,225	7.03%	16.76%
2000		--	--	--	271,005	-29,545	-9.83%	9.82%	152,041,495	6,413,630	4.40%	21.90%
2001		--	--	--	273,585	2,580	0.95%	10.87%	159,318,660	7,277,165	4.79%	27.73%
2002		--	--	--	273,200	-385	-0.14%	10.71%	175,653,085	16,334,425	10.25%	40.83%
2003	273,690	n/a	n/a	n/a	145	n/a	n/a	n/a	169,798,225	-5,854,860	-3.33%	36.14%
2004	275,885	2,195	0.80%	0.80%	145	0	0.00%	0.00%	170,908,105	1,109,880	0.65%	37.03%
2005	473,015	197,130	71.45%	72.83%	180	35	24.14%	24.14%	180,872,560	9,964,455	5.83%	45.01%
2006	474,955	1,940	0.41%	73.54%	6,710	6,530	3627.78%	4527.59%	195,513,075	14,640,515	8.09%	56.75%
2007	482,260	7,305	1.54%	76.21%	70	-6,640	-98.96%	-51.72%	218,901,920	23,388,845	11.96%	75.50%

Cnty# **91** County **WEBSTER** FL area **7** Rate Ann.%chg: Total Agric Land **5.79%**

(1) Prior to 2003, waste land data was reported with other agland due to CTL reporting form structure; Beginning 2003 waste land isolated from other agland.  
 Source: 1997 - 2007 Certificate of Taxes Levied Reports CTL NE Dept. of Revenue Property Assessment Division Prepared as of 03/01/2008

**AGRICULTURAL LAND - AVERAGE VALUE PER ACRE - Cumulative % Change 1997-2007 (from Abstracts)<sup>(1)</sup>**

Tax Year	IRRIGATED LAND					DRYLAND					GRASSLAND				
	Value	Acres	Avg Value per Acre	Ann%chg AvgVal/acre	Cmltv%chg AvgVal/Acre	Value	Acres	Avg Value per Acre	Ann%chg AvgVal/acre	Cmltv%chg AvgVal/Acre	Value	Acres	Avg Value per Acre	Ann%chg AvgVal/acre	Cmltv%chg AvgVal/Acre
1997	35,425,995	47,421	747	--	--	51,339,610	133,406	385	--	--	37,771,625	159,947	236	--	--
1998	38,486,640	48,044	801	7.23%	7.23%	54,621,790	132,647	412	7.01%	7.01%	42,997,170	159,970	269	13.98%	13.98%
1999	44,795,900	51,770	865	7.99%	15.80%	57,092,165	119,928	476	15.53%	23.64%	43,568,430	169,001	258	-4.09%	9.32%
2000	46,176,360	52,179	885	2.31%	18.47%	57,502,730	118,381	486	2.10%	26.23%	48,040,775	170,770	281	8.91%	19.07%
2001	47,963,795	52,881	907	2.49%	21.42%	56,432,980	118,323	477	-1.85%	23.90%	54,760,575	171,784	319	13.52%	35.17%
2002	54,366,780	53,975	1,007	11.03%	34.81%	60,797,495	118,265	514	7.76%	33.51%	60,264,905	170,788	353	10.66%	49.58%
2003	48,569,630	56,738	856	-15.00%	14.59%	69,684,205	117,545	593	15.37%	54.03%	51,456,925	168,710	305	-13.60%	29.24%
2004	50,925,950	59,360	858	0.22%	14.85%	68,536,105	115,664	593	-0.08%	53.91%	51,136,975	167,659	305	0.00%	29.24%
2005	55,911,220	62,100	900	4.94%	20.53%	71,217,415	114,126	624	5.31%	62.08%	53,267,255	166,460	320	4.92%	35.59%
2006	70,874,125	62,752	1,129	25.45%	51.20%	71,103,710	114,056	623	-0.10%	61.92%	53,051,230	165,785	320	0.00%	35.59%
2007	71,226,825	63,072	1,129	-0.01%	51.18%	71,236,325	113,314	629	0.84%	63.29%	76,015,785	165,252	460	43.75%	94.92%

Rate Ann.%chg AvgVal/Acre:

**4.22%**

**5.03%**

**6.90%**

Tax Year	WASTE LAND <sup>(2)</sup>					OTHER AGLAND <sup>(2)</sup>					TOTAL AGRICULTURAL LAND <sup>(1)</sup>				
	Value	Acres	Avg Value per Acre	Ann%chg AvgVal/acre	Cmltv%chg AvgVal/Acre	Value	Acres	Avg Value per Acre	Ann%chg AvgVal/acre	Cmltv%chg AvgVal/Acre	Value	Acres	Avg Value per Acre	Ann%chg AvgVal/acre	Cmltv%chg AvgVal/Acre
1997						215,250	8,631	25	--		124,752,480	349,405	357	--	--
1998						221,355	7,829	28	12.00%		136,326,955	348,490	391	9.52%	9.52%
1999						298,570	8,010	37	32.14%		145,755,065	348,709	418	6.91%	17.09%
2000						271,560	8,877	31	-16.22%		151,991,425	350,207	434	3.83%	21.57%
2001						273,240	8,031	34	9.68%		159,430,590	351,019	454	4.61%	27.17%
2002						273,145	8,118	34	0.00%		175,702,325	351,146	500	10.13%	40.06%
2003	273,285	7,720	35	n/a	n/a	535	461	1	n/a	n/a	169,984,580	351,174	484	-3.20%	35.57%
2004	276,285	7,820	35	0.94%	n/a	535	105	5	410.50%	n/a	170,875,850	350,608	487	0.70%	36.52%
2005	473,015	7,760	61	72.53%	n/a	1,370	110	12	144.41%	n/a	180,870,275	350,557	516	5.86%	44.52%
2006	474,555	7,879	60	-1.18%	n/a	6,640	89	75	497.94%	n/a	195,510,260	350,561	558	8.09%	56.22%
2007	483,190	7,924	61	1.24%	n/a	315	88	4	-95.18%	n/a	218,962,440	349,649	626	12.29%	75.42%

**91**  
**WEBSTER**

FL area **7**

Rate Ann.%chg AvgVal/Acre:

**5.78%**

(1) Valuations on Abstracts vs CTL will vary due to different reporting dates (2) Prior to 2003, waste land data was reported with other agland; Beginning 2003 waste land isolated from other agland  
source: 1997 - 2007 Abstracts Agland Assessment Level 80% for 1997-2006; 75% for 2007 NE Dept. of Revenue Property Assessment Division Prepared as of 03/01/2008

