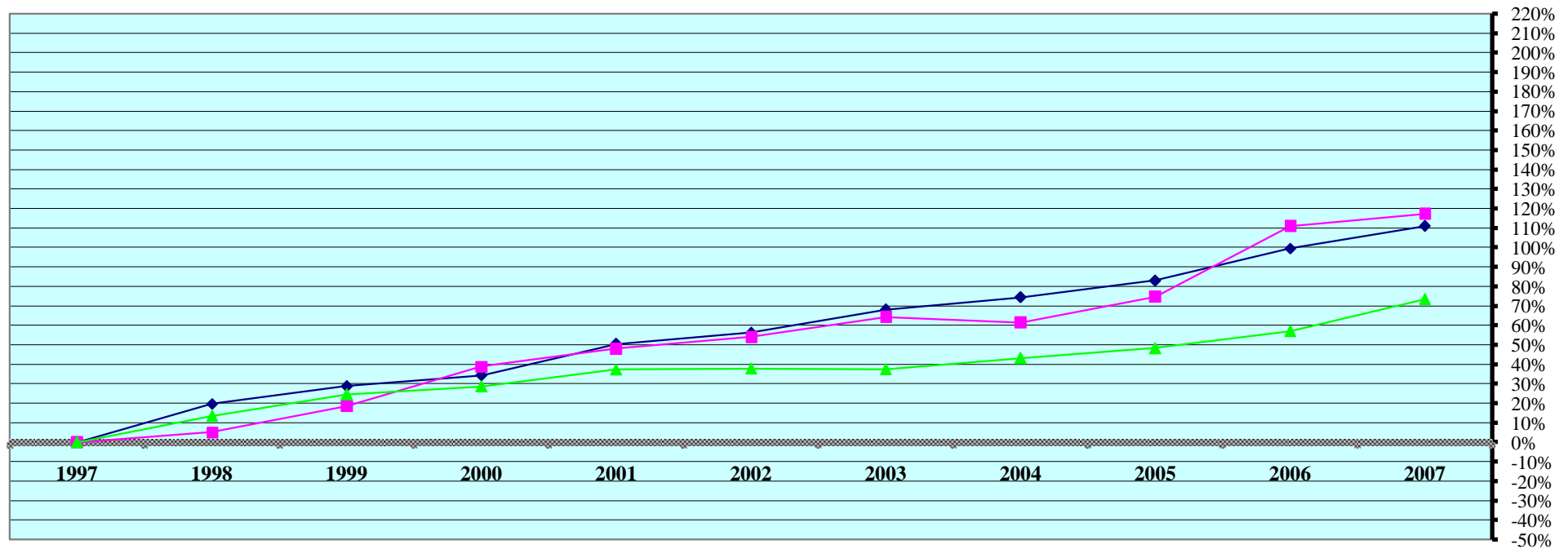


### REAL PROPERTY VALUATIONS - Cumulative %Change 1997-2007



Tax Year	Residential & Recreational <sup>(1)</sup>				Commercial & Industrial <sup>(1)</sup>				Total Agricultural Land <sup>(1)</sup>			
	Value	Amnt Value Chg	Ann.%chg	Cmltv%chg	Value	Amnt Value Chg	Ann.%chg	Cmltv%chg	Value	Amnt Value Chg	Ann.%chg	Cmltv%chg
1997	244,045,200	--	--	--	61,462,873	--	--	--	238,441,611	--	--	--
1998	292,264,335	48,219,135	19.76%	19.76%	64,702,322	3,239,449	5.27%	5.27%	270,760,365	32,318,754	13.55%	13.55%
1999	314,315,800	22,051,465	7.55%	28.79%	72,957,043	8,254,721	12.76%	18.70%	297,008,940	26,248,575	9.69%	24.56%
2000	327,917,705	13,601,905	4.33%	34.37%	85,446,715	12,489,672	17.12%	39.02%	306,858,340	9,849,400	3.32%	28.69%
2001	367,361,540	39,443,835	12.03%	50.53%	90,985,080	5,538,365	6.48%	48.03%	327,724,520	20,866,180	6.80%	37.44%
2002	381,325,380	13,963,840	3.80%	56.25%	94,655,400	3,670,320	4.03%	54.00%	328,529,340	804,820	0.25%	37.78%
2003	410,270,630	28,945,250	7.59%	68.11%	101,029,600	6,374,200	6.73%	64.38%	328,016,730	-512,610	-0.16%	37.57%
2004	425,732,030	15,461,400	3.77%	74.45%	99,253,630	-1,775,970	-1.76%	61.49%	341,584,890	13,568,160	4.14%	43.26%
2005	446,669,280	20,937,250	4.92%	83.03%	107,414,210	8,160,580	8.22%	74.76%	353,749,570	12,164,680	3.56%	48.36%
2006	486,766,150	40,096,870	8.98%	99.46%	129,692,860	22,278,650	20.74%	111.01%	374,456,640	20,707,070	5.85%	57.04%
2007	514,751,650	27,985,500	5.75%	110.92%	133,537,090	3,844,230	2.96%	117.26%	413,628,650	39,172,010	10.46%	73.47%

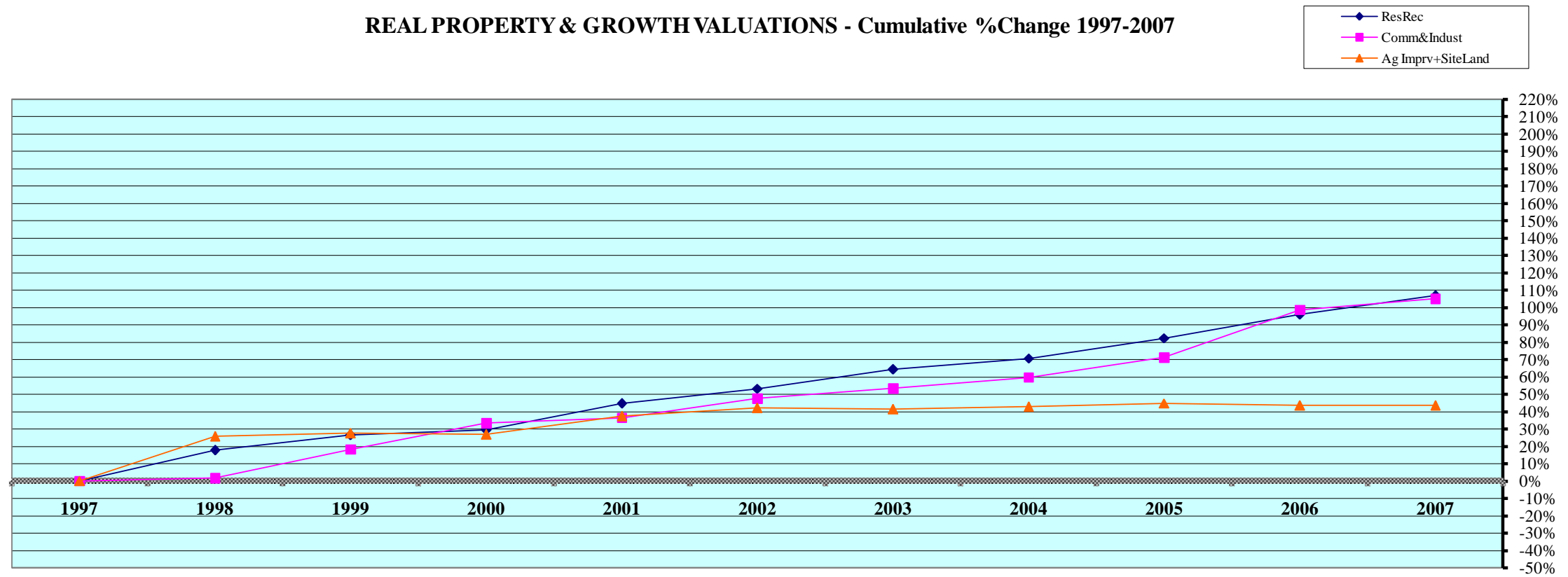
Rate Ann. %chg:      Resid & Rec.       Comm & Indust       Agric. Land

Cnty#   
 County

FL area

(1) Resid. & Recreat. excludes agdwell & farm homesite land; Comm. & Indust. excludes minerals; Agland includes irrigated, dry, grass, waste, & other agland, excludes farmsite land.  
 Source: 1997 - 2007 Certificate of Taxes Levied Reports CTL      NE Dept. of Revenue Property Assessment Division      Prepared as of 03/01/2008

**REAL PROPERTY & GROWTH VALUATIONS - Cumulative %Change 1997-2007**



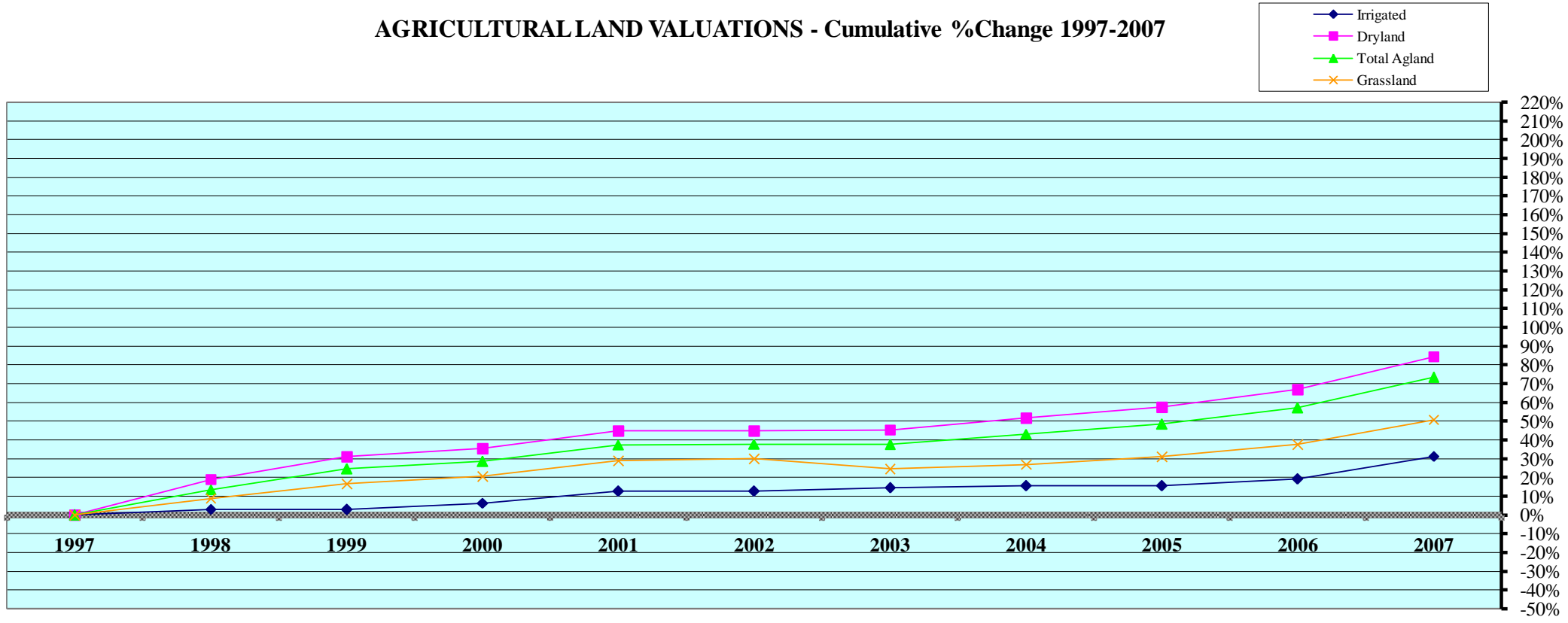
Tax Year	Residential & Recreational <sup>(1)</sup>						Commercial & Industrial <sup>(1)</sup>					
	Value	Growth Value	% growth of value	Value Exclud. Growth	Ann.%chg w/o grwth	Cmltv%chg w/o grwth	Value	Growth Value	% growth of value	Value Exclud. Growth	Ann.%chg w/o grwth	Cmltv%chg w/o grwth
1997	244,045,200	6,256,060	2.56%	237,789,140	--	--	61,462,873	2,256,395	3.67%	59,206,478	--	--
1998	292,264,335	5,377,498	1.84%	286,886,837	17.55%	17.55%	64,702,322	2,228,764	3.44%	62,473,558	1.64%	1.64%
1999	314,315,800	5,694,965	1.81%	308,620,835	5.60%	26.46%	72,957,043	306,725	0.42%	72,650,318	12.28%	18.20%
2000	327,917,705	12,590,840	3.84%	315,326,865	0.32%	29.21%	85,446,715	3,565,025	4.17%	81,881,690	12.23%	33.22%
2001	367,361,540	14,151,520	3.85%	353,210,020	7.71%	44.73%	90,985,080	7,128,092	7.83%	83,856,988	-1.86%	36.44%
2002	381,325,380	7,510,565	1.97%	373,814,815	1.76%	53.17%	94,655,400	3,990,960	4.22%	90,664,440	-0.35%	47.51%
2003	410,270,630	9,446,830	2.30%	400,823,800	5.11%	64.24%	101,029,600	6,716,450	6.65%	94,313,150	-0.36%	53.45%
2004	425,732,030	9,359,925	2.20%	416,372,105	1.49%	70.61%	99,253,630	1,073,300	1.08%	98,180,330	-2.82%	59.74%
2005	446,669,280	1,754,880	0.39%	444,914,400	4.51%	82.31%	107,414,210	2,131,940	1.98%	105,282,270	6.07%	71.29%
2006	486,766,150	8,335,820	1.71%	478,430,330	7.11%	96.04%	129,692,860	7,578,100	5.84%	122,114,760	13.69%	98.68%
2007	514,751,650	9,853,158	1.91%	504,898,492	3.73%	106.89%	133,537,090	7,434,350	5.57%	126,102,740	-2.77%	105.17%
Rate Ann%chg	7.75%		Resid & Rec. w/o growth			5.49%	8.07%		C & I w/o growth			3.78%

Tax Year	Ag Improvements & Site Land <sup>(1)</sup>							
	Agdwell & Homesite Value	Agoutbldg & Farmsite Value	Ag Imprv&Site Total Value	Growth Value	% growth of value	Value Exclud. Growth	Ann.%chg w/o grwth	Cmltv%chg w/o grwth
1997	39,373,720	23,037,330	62,411,050	546,520	0.88%	61,864,530	--	--
1998	59,413,200	20,788,605	80,201,805	1,787,350	2.23%	78,414,455	25.64%	25.64%
1999	59,730,715	20,445,300	80,176,015	510,715	0.64%	79,665,300	-0.67%	27.65%
2000	60,867,560	20,289,410	81,156,970	1,980,160	2.44%	79,176,810	-1.25%	26.86%
2001	67,583,710	21,640,960	89,224,670	3,554,858	3.98%	85,669,812	5.56%	37.27%
2002	68,877,920	21,571,240	90,449,160	1,739,785	1.92%	88,709,375	-0.58%	42.14%
2003	68,849,620	21,335,520	90,185,140	1,976,230	2.19%	88,208,910	-2.48%	41.34%
2004	69,260,090	21,346,010	90,606,100	1,513,370	1.67%	89,092,730	-1.21%	42.75%
2005	69,500,370	21,408,990	90,909,360	531,280	0.58%	90,378,080	-0.25%	44.81%
2006	69,230,670	21,878,610	91,109,280	1,612,065	1.77%	89,497,215	-1.55%	43.40%
2007	69,954,310	21,718,800	91,673,110	2,082,030	2.27%	89,591,080	-1.67%	43.55%
Rate Ann%chg	5.92%	-0.59%	3.92%	Ag Imprv+Site w/o growth		2.16%		

(1) Resid. & Recreat. excludes agdwell & farm homesite land; Comm. & Indust. excludes minerals; Agland includes irrigated, dry, grass, waste & other agland, excludes farmsite land. Real Prop Growth = value attributable to new construction, additions to existing buildings, and any improvements for real property which increase the value of such property.

Sources:  
 Value; 1997 - 2007 CTL  
 Growth Value; 1997-2007 Abstract of Asmnt Rpt.  
 NE Dept. of Revenue Property Assessment Division  
 Prepared as of 03/01/2008

AGRICULTURAL LAND VALUATIONS - Cumulative %Change 1997-2007



Tax Year	Irrigated Land				Dryland				Grassland			
	Value	Value Chg	Ann%chg	Cmltv%chg	Value	Value Chg	Ann%chg	Cmltv%chg	Value	Value Chg	Ann%chg	Cmltv%chg
1997	3,857,475	--	--	--	200,311,650	--	--	--	25,793,691	--	--	--
1998	3,975,910	118,435	3.07%	3.07%	238,439,920	38,128,270	19.03%	19.03%	28,094,970	2,301,279	8.92%	8.92%
1999	3,968,175	-7,735	-0.19%	2.87%	262,683,940	24,244,020	10.17%	31.14%	30,100,970	2,006,000	7.14%	16.70%
2000	4,104,025	135,850	3.42%	6.39%	271,373,920	8,689,980	3.31%	35.48%	31,123,660	1,022,690	3.40%	20.66%
2001	4,349,430	245,405	5.98%	12.75%	289,945,360	18,571,440	6.84%	44.75%	33,231,610	2,107,950	6.77%	28.84%
2002	4,343,960	-5,470	-0.13%	12.61%	290,406,030	460,670	0.16%	44.98%	33,567,140	335,530	1.01%	30.14%
2003	4,411,990	68,030	1.57%	14.38%	291,253,750	847,720	0.29%	45.40%	32,137,150	-1,429,990	-4.26%	24.59%
2004	4,460,360	48,370	1.10%	15.63%	304,168,280	12,914,530	4.43%	51.85%	32,741,810	604,660	1.88%	26.94%
2005	4,460,360	0	0.00%	15.63%	315,257,750	11,089,470	3.65%	57.38%	33,812,370	1,070,560	3.27%	31.09%
2006	4,598,500	138,140	3.10%	19.21%	334,134,430	18,876,680	5.99%	66.81%	35,508,390	1,696,020	5.02%	37.66%
2007	5,065,180	466,680	10.15%	31.31%	369,443,200	35,308,770	10.57%	84.43%	38,905,170	3,396,780	9.57%	50.83%

Rate Ann.%chg: Irrigated **2.76%** Dryland **6.31%** Grassland **4.20%**

Tax Year	Waste Land <sup>(1)</sup>				Other Agland <sup>(1)</sup>				Total Agricultural			
	Value	Value Chg	Ann%chg	Cmltv%chg	Value	Value Chg	Ann%chg	Cmltv%chg	Value	Value Chg	Ann%chg	Cmltv%chg
1997	--	--	--	--	8,478,795	--	--	--	238,441,611	--	--	--
1998	--	--	--	--	249,565	-8,229,230	-97.06%	-97.06%	270,760,365	32,318,754	13.55%	13.55%
1999	--	--	--	--	255,855	6,290	2.52%	-96.98%	297,008,940	26,248,575	9.69%	24.56%
2000	--	--	--	--	256,735	880	0.34%	-96.97%	306,858,340	9,849,400	3.32%	28.69%
2001	--	--	--	--	198,120	-58,615	-22.83%	-97.66%	327,724,520	20,866,180	6.80%	37.44%
2002	--	--	--	--	212,210	14,090	7.11%	-97.50%	328,529,340	804,820	0.25%	37.78%
2003	213,840	n/a	n/a	n/a	0	n/a	n/a	n/a	328,016,730	-512,610	-0.16%	37.57%
2004	214,440	600	0.28%	0.28%	0	0			341,584,890	13,568,160	4.14%	43.26%
2005	219,090	4,650	2.17%	2.46%	0	0			353,749,570	12,164,680	3.56%	48.36%
2006	215,260	-3,830	-1.75%	0.66%	60	60			374,456,640	20,707,070	5.85%	57.04%
2007	215,040	-220	-0.10%	0.56%	60	0	0.00%		413,628,650	39,172,010	10.46%	73.47%

Cnty# **66** County **OTOE** FL area **8** Rate Ann.%chg: Total Agric Land **5.66%**

(1) Prior to 2003, waste land data was reported with other agland due to CTL reporting form structure; Beginning 2003 waste land isolated from other agland.  
 Source: 1997 - 2007 Certificate of Taxes Levied Reports CTL NE Dept. of Revenue Property Assessment Division Prepared as of 03/01/2008

**AGRICULTURAL LAND - AVERAGE VALUE PER ACRE - Cumulative % Change 1997-2007 (from Abstracts)<sup>(1)</sup>**

Tax Year	IRRIGATED LAND					DRYLAND					GRASSLAND				
	Value	Acres	Avg Value per Acre	Ann%chg AvgVal/acre	Cmltv%chg AvgVal/Acre	Value	Acres	Avg Value per Acre	Ann%chg AvgVal/acre	Cmltv%chg AvgVal/Acre	Value	Acres	Avg Value per Acre	Ann%chg AvgVal/acre	Cmltv%chg AvgVal/Acre
1997	3,803,340	4,028	944	--	--	204,760,485	281,367	728	--	--	28,610,610	72,856	393	--	--
1998	4,253,365	3,933	1,081	14.51%	14.51%	238,703,215	268,274	890	22.25%	22.25%	27,974,125	69,157	405	3.05%	3.05%
1999	3,798,335	3,640	1,043	-3.52%	10.49%	254,825,665	268,689	948	6.52%	30.22%	29,401,660	69,260	425	4.94%	8.14%
2000	4,107,115	3,797	1,082	3.74%	14.62%	271,608,595	276,869	981	3.48%	34.75%	31,167,775	70,388	443	4.24%	12.72%
2001	4,453,180	3,781	1,178	8.87%	24.79%	309,634,750	280,760	1,103	12.44%	51.51%	35,168,310	71,341	493	11.29%	25.45%
2002	4,994,900	3,762	1,328	12.73%	40.68%	327,092,090	280,150	1,168	5.89%	60.44%	44,398,940	71,072	625	26.77%	59.03%
2003	4,415,950	3,884	1,137	-14.38%	20.44%	291,828,180	281,899	1,035	-11.39%	42.17%	32,151,840	68,933	466	-25.44%	18.58%
2004	4,498,360	3,881	1,159	1.94%	22.78%	310,093,460	284,590	1,090	5.28%	49.67%	33,233,100	65,960	504	8.12%	28.20%
2005	4,460,360	3,881	1,149	-0.84%	21.74%	320,874,270	284,305	1,129	3.58%	55.03%	34,788,230	65,790	529	4.95%	34.55%
2006	4,480,390	3,705	1,209	5.23%	28.11%	336,328,740	283,629	1,186	5.07%	62.89%	35,790,090	65,387	547	3.51%	39.28%
2007	5,084,620	3,832	1,327	9.72%	40.57%	370,591,120	283,330	1,308	10.30%	79.67%	38,980,290	65,225	598	9.18%	52.07%

Rate Ann.%chg AvgVal/Acre:

**3.46%**

**6.03%**

**4.28%**

Tax Year	WASTE LAND <sup>(2)</sup>					OTHER AGLAND <sup>(2)</sup>					TOTAL AGRICULTURAL LAND <sup>(1)</sup>				
	Value	Acres	Avg Value per Acre	Ann%chg AvgVal/acre	Cmltv%chg AvgVal/Acre	Value	Acres	Avg Value per Acre	Ann%chg AvgVal/acre	Cmltv%chg AvgVal/Acre	Value	Acres	Avg Value per Acre	Ann%chg AvgVal/acre	Cmltv%chg AvgVal/Acre
1997						259,475	8,588	30	--		237,433,910	366,839	647	--	--
1998						262,560	8,335	32	6.67%		271,193,265	349,699	776	19.94%	19.94%
1999						252,770	8,426	30	-6.25%		288,278,430	350,016	824	6.19%	27.36%
2000						266,940	8,634	31	3.33%		307,150,425	359,689	854	3.64%	31.99%
2001						201,920	6,723	30	-3.23%		349,458,160	362,606	964	12.88%	49.00%
2002						208,430	6,940	30	0.00%		376,694,360	361,924	1,041	7.99%	60.90%
2003	213,840	7,120	30	n/a	n/a	3,120	104	30	n/a	n/a	328,612,930	361,939	908	-12.78%	40.34%
2004	213,590	7,111	30	0.12%	n/a	18,300	104	176	486.99%	n/a	348,056,810	361,647	962	5.99%	48.75%
2005	213,530	7,109	30	0.00%	n/a	1,740	58	30	-82.94%	n/a	360,338,130	361,143	998	3.67%	54.21%
2006	213,190	7,098	30	0.00%	n/a	1,740	58	30	0.00%	n/a	376,814,150	359,877	1,047	4.94%	61.83%
2007	215,570	7,132	30	0.63%	n/a	1,740	58	30	0.00%	n/a	414,873,340	359,577	1,154	10.19%	78.33%

**66**  
**OTOE**

FL area **8**

Rate Ann.%chg AvgVal/Acre:

**5.96%**

(1) Valuations on Abstracts vs CTL will vary due to different reporting dates (2) Prior to 2003, waste land data was reported with other agland; Beginning 2003 waste land isolated from other agland  
source: 1997 - 2007 Abstracts Agland Assessment Level 80% for 1997-2006; 75% for 2007 NE Dept. of Revenue Property Assessment Division Prepared as of 03/01/2008

**2007 County and Municipal Valuations by Property Type**

Pop.	County:	Personal Prop	StateAsd PP	StateAsdReal	Residential	Commercial	Industrial	Recreation	Agland	Agdwell&HS	AgImprv&FS	Minerals	Total Value
15,396	OTOE	57,297,650	23,049,565	12,188,338	514,447,630	116,615,250	16,921,840	304,020	413,628,650	69,954,310	21,718,800	0	1,246,126,053
cnty sector value % of total value:		4.60%	1.85%	0.98%	41.28%	9.36%	1.36%	0.02%	33.19%	5.61%	1.74%		100.00%
Pop.	Municipality:	Personal Prop	StateAsd PP	StateAsd Real	Residential	Commercial	Industrial	Recreation	Agland	Agdwell&HS	AgImprv&FS	Minerals	Total Value
66	BURR	84,216	28,534	4,375	1,227,510	953,280	0	0	0	0	0	0	2,297,915
0.43%	%sector of county sector	0.15%	0.12%	0.04%	0.24%	0.82%							0.18%
	%sector of municipality	3.66%	1.24%	0.19%	53.42%	41.48%							100.00%
231	DOUGLAS	36,946	53,972	8,275	4,425,860	354,170	0	0	0	0	0	0	4,879,223
1.50%	%sector of county sector	0.06%	0.23%	0.07%	0.86%	0.30%							0.39%
	%sector of municipality	0.76%	1.11%	0.17%	90.71%	7.26%							100.00%
237	DUNBAR	10,741	51,964	7,967	2,939,350	264,280	0	0	1,530	0	0	0	3,275,832
1.54%	%sector of county sector	0.02%	0.23%	0.07%	0.57%	0.23%			0.00%				0.26%
	%sector of municipality	0.33%	1.59%	0.24%	89.73%	8.07%			0.05%				100.00%
7,228	NEBRASKA CITY	8,689,354	1,863,417	1,236,955	216,312,590	75,069,990	7,089,810	0	17,160	0	0	0	310,279,276
46.95%	%sector of county sector	15.17%	8.08%	10.15%	42.05%	64.37%	41.90%		0.00%				24.90%
	%sector of municipality	2.80%	0.60%	0.40%	69.72%	24.19%	2.28%		0.01%				100.00%
217	OTOE	2,838	31,113	4,770	2,701,060	195,270	0	0	0	0	0	0	2,935,051
1.41%	%sector of county sector	0.00%	0.13%	0.04%	0.53%	0.17%							0.24%
	%sector of municipality	0.10%	1.06%	0.16%	92.03%	6.65%							100.00%
546	PALMYRA	217,121	205,574	15,035	16,734,090	2,113,940	29,230	0	0	0	0	0	19,314,990
3.55%	%sector of county sector	0.38%	0.89%	0.12%	3.25%	1.81%	0.17%						1.55%
	%sector of municipality	1.12%	1.06%	0.08%	86.64%	10.94%	0.15%						100.00%
1,764	SYRACUSE	5,264,578	183,225	28,092	74,800,770	15,027,280	1,890,500	0	22,000	0	0	0	97,216,445
11.46%	%sector of county sector	9.19%	0.79%	0.23%	14.54%	12.89%	11.17%		0.01%				7.80%
	%sector of municipality	5.42%	0.19%	0.03%	76.94%	15.46%	1.94%		0.02%				100.00%
268	TALMAGE	60,400	58,363	8,948	2,782,940	1,026,180	0	0	0	0	0	0	3,936,831
1.74%	%sector of county sector	0.11%	0.25%	0.07%	0.54%	0.88%							0.32%
	%sector of municipality	1.53%	1.48%	0.23%	70.69%	26.07%							100.00%
342	UNADILLA	94,440	63,190	9,688	10,497,620	1,109,560	0	0	0	0	0	0	11,774,498
2.22%	%sector of county sector	0.16%	0.27%	0.08%	2.04%	0.95%							0.94%
	%sector of municipality	0.80%	0.54%	0.08%	89.16%	9.42%							100.00%
10,899	<b>Total Municipalities</b>	<b>14,460,634</b>	<b>2,539,352</b>	<b>1,324,105</b>	<b>332,421,790</b>	<b>96,113,950</b>	<b>9,009,540</b>	<b>0</b>	<b>40,690</b>	<b>0</b>	<b>0</b>	<b>0</b>	<b>455,910,061</b>
70.79%	%all municip.sect of cnty	25.24%	11.02%	10.86%	64.62%	82.42%	53.24%		0.01%				36.59%

Sources: 2007 Certificate of Taxes Levied CTL, 2000 US Census; Dec2007 Municipality Pop. per Research Division Dept. of Revenue Property Assessment Division Prepared as of 03/01/2008

Cnty#	County
66	OTOE