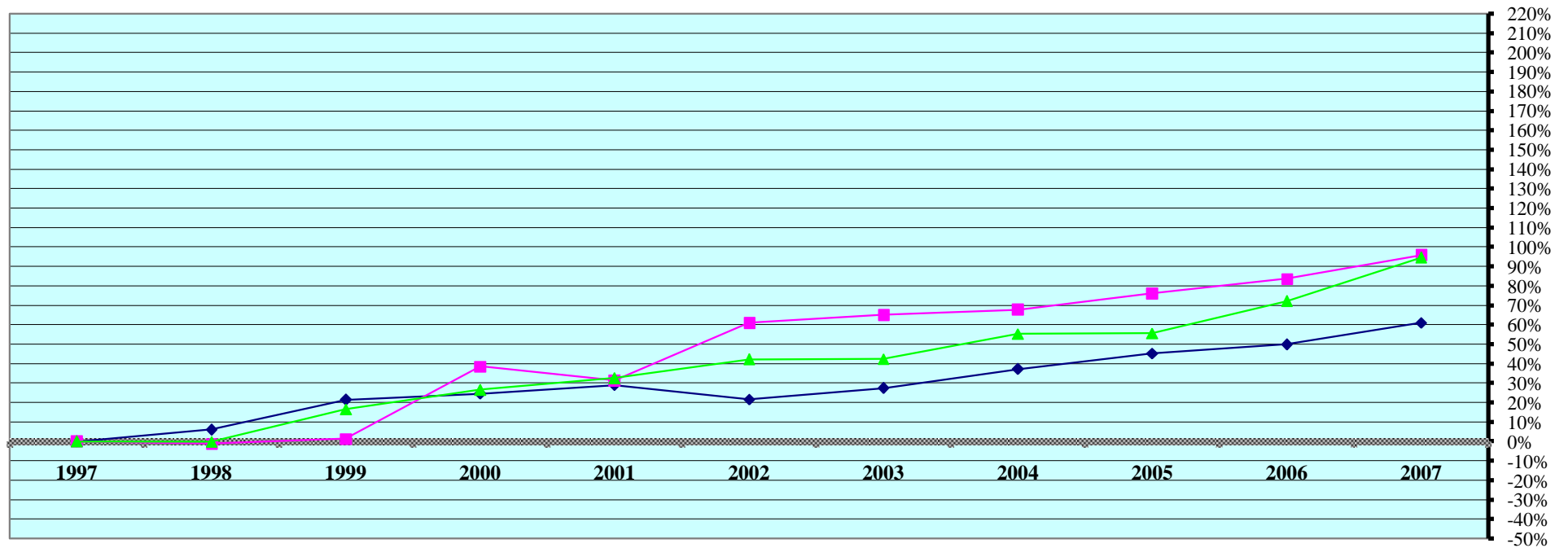


REAL PROPERTY VALUATIONS - Cumulative %Change 1997-2007



Tax Year	Residential & Recreational ⁽¹⁾				Commercial & Industrial ⁽¹⁾				Total Agricultural Land ⁽¹⁾			
	Value	Amnt Value Chg	Ann.%chg	Cmltv%chg	Value	Amnt Value Chg	Ann.%chg	Cmltv%chg	Value	Amnt Value Chg	Ann.%chg	Cmltv%chg
1997	4,823,406	--	--	--	905,243	--	--	--	77,202,044	--	--	--
1998	5,118,729	295,323	6.12%	6.12%	895,455	-9,788	-1.08%	-1.08%	77,146,298	-55,746	-0.07%	-0.07%
1999	5,854,876	736,147	14.38%	21.38%	918,397	22,942	2.56%	1.45%	90,025,868	12,879,570	16.69%	16.61%
2000	6,012,828	157,952	2.70%	24.66%	1,255,081	336,684	36.66%	38.65%	97,760,970	7,735,102	8.59%	26.63%
2001	6,223,230	210,402	3.50%	29.02%	1,188,690	-66,391	-5.29%	31.31%	102,356,422	4,595,452	4.70%	32.58%
2002	5,866,240	-356,990	-5.74%	21.62%	1,457,050	268,360	22.58%	60.96%	109,839,690	7,483,268	7.31%	42.28%
2003	6,145,330	279,090	4.76%	27.41%	1,494,470	37,420	2.57%	65.09%	109,944,620	104,930	0.10%	42.41%
2004	6,622,050	476,720	7.76%	37.29%	1,518,470	24,000	1.61%	67.74%	119,949,610	10,004,990	9.10%	55.37%
2005	7,005,850	383,800	5.80%	45.25%	1,594,030	75,560	4.98%	76.09%	120,165,930	216,320	0.18%	55.65%
2006	7,232,660	226,810	3.24%	49.95%	1,662,880	68,850	4.32%	83.69%	132,888,970	12,723,040	10.59%	72.13%
2007	7,767,530	534,870	7.40%	61.04%	1,772,260	109,380	6.58%	95.78%	150,164,860	17,275,890	13.00%	94.51%

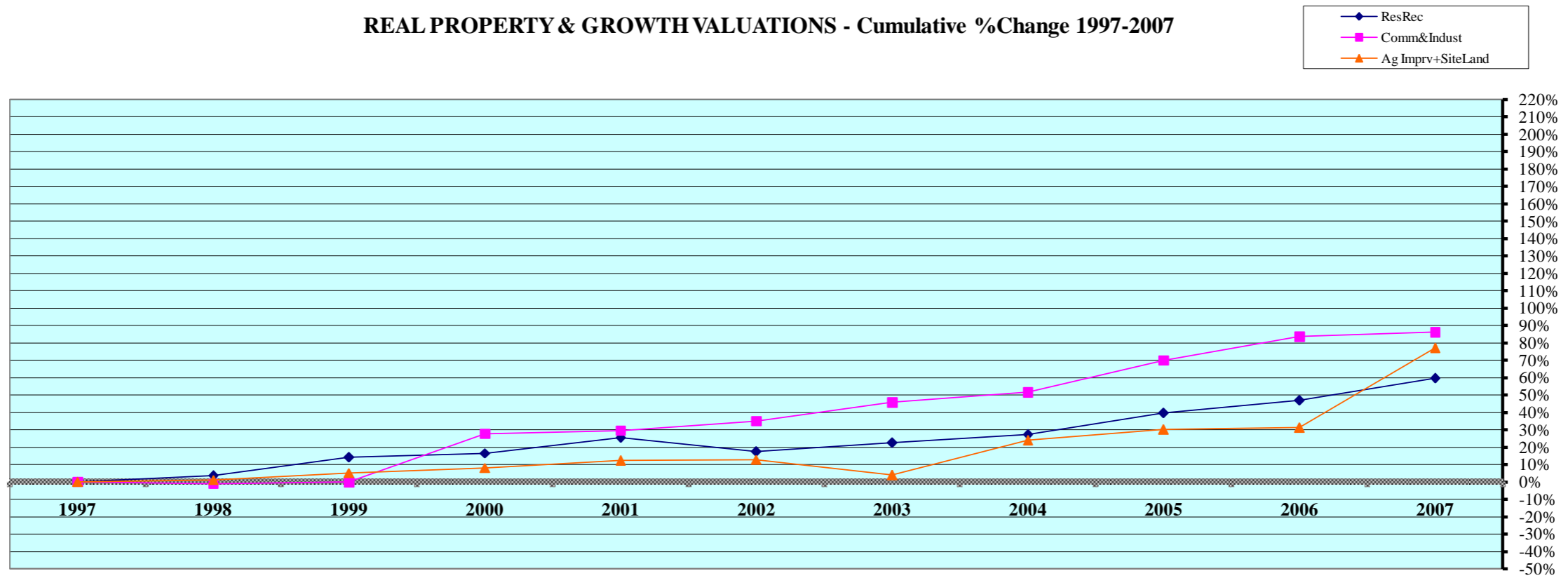
Rate Ann. %chg: Resid & Rec. 4.88% Comm & Indust 6.95% Agric. Land 6.88%

Cnty# 52
 County KEYA PAHA

FL area 11

(1) Resid. & Recreat. excludes agdwll & farm homesite land; Comm. & Indust. excludes minerals; Agland includes irrigated, dry, grass, waste, & other agland, excludes farmsite land.
 Source: 1997 - 2007 Certificate of Taxes Levied Reports CTL NE Dept. of Revenue Property Assessment Division Prepared as of 03/01/2008

REAL PROPERTY & GROWTH VALUATIONS - Cumulative %Change 1997-2007



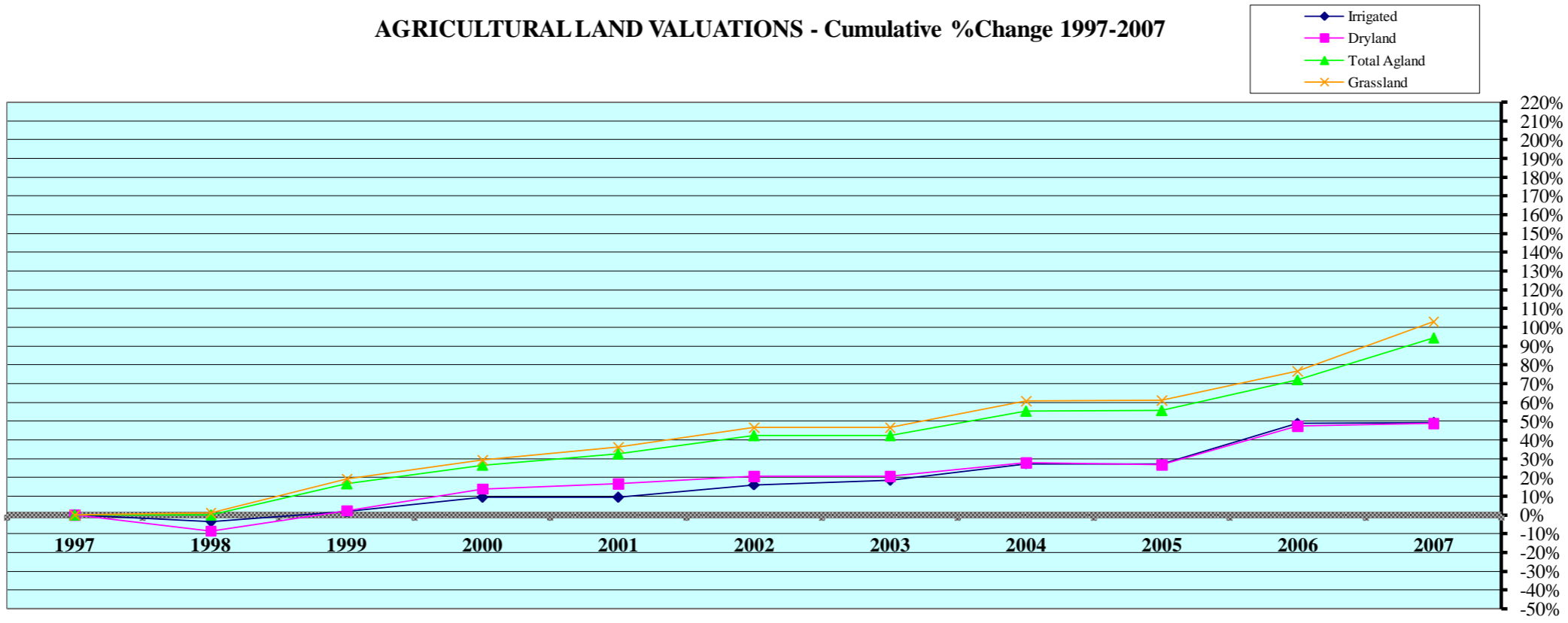
Tax Year	Residential & Recreational ⁽¹⁾						Commercial & Industrial ⁽¹⁾					
	Value	Growth Value	% growth of value	Value Exclud. Growth	Ann.%chg w/o grwth	Cmltv%chg w/o grwth	Value	Growth Value	% growth of value	Value Exclud. Growth	Ann.%chg w/o grwth	Cmltv%chg w/o grwth
1997	4,823,406	0	0.00%	4,823,406	--	--	905,243	0	0.00%	905,243	--	--
1998	5,118,729	128,356	2.51%	4,990,373	3.46%	3.46%	895,455	0	0.00%	895,455	-1.08%	-1.08%
1999	5,854,876	360,160	6.15%	5,494,716	7.35%	13.92%	918,397	15,273	1.66%	903,124	0.86%	-0.23%
2000	6,012,828	398,593	6.63%	5,614,235	-4.11%	16.40%	1,255,081	99,045	7.89%	1,156,036	25.88%	27.70%
2001	6,223,230	183,493	2.95%	6,039,737	0.45%	25.22%	1,188,690	16,401	1.38%	1,172,289	-6.60%	29.50%
2002	5,866,240	214,002	3.65%	5,652,238	-9.18%	17.18%	1,457,050	235,555	16.17%	1,221,495	2.76%	34.94%
2003	6,145,330	242,441	3.95%	5,902,889	0.62%	22.38%	1,494,470	175,168	11.72%	1,319,302	-9.45%	45.74%
2004	6,622,050	494,030	7.46%	6,128,020	-0.28%	27.05%	1,518,470	147,890	9.74%	1,370,580	-8.29%	51.40%
2005	7,005,850	280,620	4.01%	6,725,230	1.56%	39.43%	1,594,030	55,704	3.49%	1,538,326	1.31%	69.94%
2006	7,232,660	147,410	2.04%	7,085,250	1.13%	46.89%	1,662,880	0	0.00%	1,662,880	4.32%	83.69%
2007	7,767,530	71,590	0.92%	7,695,940	6.41%	59.55%	1,772,260	88,280	4.98%	1,683,980	1.27%	86.03%
Rate Ann%chg	4.88%		Resid & Rec. w/o growth			0.74%	6.95%		C & I w/o growth			1.10%

Tax Year	Ag Improvements & Site Land ⁽¹⁾					Ann.%chg w/o grwth	Cmltv%chg w/o grwth
	Agdwell & Homesite Value	Agoutbldg & Farmsite Value	Ag Imprv&Site Total Value	Growth Value	% growth of value		
1997	4,919,438	3,081,300	8,000,738	0	0.00%	--	--
1998	5,207,523	3,053,498	8,261,021	170,498	2.06%	1.12%	1.12%
1999	5,522,160	3,138,194	8,660,354	250,044	2.89%	1.81%	5.12%
2000	5,760,778	3,299,887	9,060,665	417,678	4.61%	-0.20%	8.03%
2001	5,829,415	3,444,903	9,274,318	291,937	3.15%	-0.86%	12.27%
2002	6,117,150	3,518,180	9,635,330	614,817	6.38%	-2.74%	12.75%
2003	6,328,650	3,276,060	9,604,710	1,285,328	13.38%	-13.66%	3.98%
2004	6,911,220	3,367,590	10,278,810	372,610	3.63%	3.14%	23.82%
2005	7,286,590	3,490,380	10,776,970	364,995	3.39%	1.30%	30.14%
2006	7,320,040	3,678,340	10,998,380	511,740	4.65%	-2.69%	31.07%
2007	10,415,160	3,755,620	14,170,780	0	0.00%	28.84%	77.12%
Rate Ann%chg	7.79%	2.00%	5.88%	Ag Imprv+Site w/o growth		1.61%	

(1) Resid. & Recreat. excludes agdwell & farm homesite land; Comm. & Indust. excludes minerals; Agland includes irrigated, dry, grass, waste & other agland, excludes farmsite land. Real Prop Growth = value attributable to new construction, additions to existing buildings, and any improvements for real property which increase the value of such property.

Sources:
Value; 1997 - 2007 CTL
Growth Value; 1997-2007 Abstract of Asmnt Rpt.
NE Dept. of Revenue Property Assessment Division
Prepared as of 03/01/2008

AGRICULTURAL LAND VALUATIONS - Cumulative %Change 1997-2007



Tax Year	Irrigated Land				Dryland				Grassland			
	Value	Value Chg	Ann%chg	Cmltv%chg	Value	Value Chg	Ann%chg	Cmltv%chg	Value	Value Chg	Ann%chg	Cmltv%chg
1997	5,062,297	--	--	--	7,308,847	--	--	--	64,811,577	--	--	--
1998	4,885,631	-176,666	-3.49%	-3.49%	6,689,773	-619,074	-8.47%	-8.47%	65,551,541	739,964	1.14%	1.14%
1999	5,152,215	266,584	5.46%	1.78%	7,482,419	792,646	11.85%	2.37%	77,371,881	11,820,340	18.03%	19.38%
2000	5,536,762	384,547	7.46%	9.37%	8,327,889	845,470	11.30%	13.94%	83,876,771	6,504,890	8.41%	29.42%
2001	5,546,261	9,499	0.17%	9.56%	8,536,349	208,460	2.50%	16.79%	88,253,063	4,376,292	5.22%	36.17%
2002	5,877,650	331,389	5.97%	16.11%	8,815,020	278,671	3.26%	20.61%	95,127,270	6,874,207	7.79%	46.78%
2003	5,994,440	116,790	1.99%	18.41%	8,815,390	370	0.00%	20.61%	95,114,180	-13,090	-0.01%	46.75%
2004	6,443,980	449,540	7.50%	27.29%	9,338,570	523,180	5.93%	27.77%	104,146,450	9,032,270	9.50%	60.69%
2005	6,442,110	-1,870	-0.03%	27.26%	9,269,560	-69,010	-0.74%	26.83%	104,433,650	287,200	0.28%	61.13%
2006	7,542,410	1,100,300	17.08%	48.99%	10,781,210	1,511,650	16.31%	47.51%	114,544,140	10,110,490	9.68%	76.73%
2007	7,549,800	7,390	0.10%	49.14%	10,888,220	107,010	0.99%	48.97%	131,705,940	17,161,800	14.98%	103.21%

Rate Ann.%chg: Irrigated **4.08%** Dryland **4.07%** Grassland **7.35%**

Tax Year	Waste Land ⁽¹⁾				Other Agland ⁽¹⁾				Total Agricultural			
	Value	Value Chg	Ann%chg	Cmltv%chg	Value	Value Chg	Ann%chg	Cmltv%chg	Value	Value Chg	Ann%chg	Cmltv%chg
1997		--	--	--	19,323	--	--	--	77,202,044	--	--	--
1998		--	--	--	19,353	30	0.16%	0.16%	77,146,298	-55,746	-0.07%	-0.07%
1999		--	--	--	19,353	0	0.00%	0.16%	90,025,868	12,879,570	16.69%	16.61%
2000		--	--	--	19,548	195	1.01%	1.16%	97,760,970	7,735,102	8.59%	26.63%
2001		--	--	--	20,749	1,201	6.14%	7.38%	102,356,422	4,595,452	4.70%	32.58%
2002		--	--	--	19,750	-999	-4.81%	2.21%	109,839,690	7,483,268	7.31%	42.28%
2003	20,610	n/a	n/a	n/a	0	n/a	n/a	n/a	109,944,620	104,930	0.10%	42.41%
2004	20,610	0	0.00%	0.00%	0	0			119,949,610	10,004,990	9.10%	55.37%
2005	20,610	0	0.00%	0.00%	0	0			120,165,930	216,320	0.18%	55.65%
2006	20,570	-40	-0.19%	-0.19%	640	640			132,888,970	12,723,040	10.59%	72.13%
2007	21,100	530	2.58%	2.38%	(200)	-840	-131.25%		150,164,860	17,275,890	13.00%	94.51%

Cnty# **52** County **KEYA PAHA** FL area **11** Rate Ann.%chg: Total Agric Land **6.88%**

(1) Prior to 2003, waste land data was reported with other agland due to CTL reporting form structure; Beginning 2003 waste land isolated from other agland.
 Source: 1997 - 2007 Certificate of Taxes Levied Reports CTL NE Dept. of Revenue Property Assessment Division Prepared as of 03/01/2008

AGRICULTURAL LAND - AVERAGE VALUE PER ACRE - Cumulative % Change 1997-2007 (from Abstracts)⁽¹⁾

Tax Year	IRRIGATED LAND					DRYLAND					GRASSLAND				
	Value	Acres	Avg Value per Acre	Ann%chg AvgVal/acre	Cmltv%chg AvgVal/Acre	Value	Acres	Avg Value per Acre	Ann%chg AvgVal/acre	Cmltv%chg AvgVal/Acre	Value	Acres	Avg Value per Acre	Ann%chg AvgVal/acre	Cmltv%chg AvgVal/Acre
1997	5,062,297	15,524	326	--	--	7,308,847	36,046	203	--	--	64,815,524	407,560	159	--	--
1998	4,885,631	15,999	305	-6.44%	-6.44%	6,689,773	35,919	186	-8.37%	-8.37%	65,559,499	407,048	161	1.26%	1.26%
1999	5,130,167	16,039	320	4.92%	-1.84%	7,510,585	35,985	209	12.37%	2.96%	77,340,926	406,867	190	18.01%	19.50%
2000	5,537,407	16,089	344	7.50%	5.52%	8,321,271	35,853	232	11.00%	14.29%	83,886,262	407,142	206	8.42%	29.56%
2001	5,546,261	16,121	344	0.00%	5.52%	8,536,349	36,741	232	0.00%	14.29%	88,206,232	428,345	206	0.00%	29.56%
2002	5,877,650	16,293	361	4.94%	10.74%	8,809,240	36,725	240	3.45%	18.23%	95,170,640	428,774	222	7.77%	39.62%
2003	5,994,440	16,581	362	0.28%	11.04%	8,815,390	36,763	240	0.00%	18.23%	95,114,650	428,087	222	0.00%	39.62%
2004	6,396,390	17,062	375	3.56%	15.00%	9,378,440	36,463	257	7.17%	26.70%	104,214,310	429,456	243	9.31%	52.62%
2005	6,481,800	18,178	357	-4.89%	9.38%	9,243,310	35,901	257	0.10%	26.83%	104,444,960	428,445	244	0.46%	53.32%
2006	7,468,660	19,338	386	8.31%	18.47%	10,737,370	34,936	307	19.37%	51.40%	115,111,520	428,297	269	10.25%	69.03%
2007	7,478,060	19,517	383	-0.79%	17.53%	10,884,970	35,032	311	1.10%	53.06%	131,792,050	428,027	308	14.56%	93.65%

Rate Ann.%chg AvgVal/Acre:

1.63%

4.35%

6.83%

Tax Year	WASTE LAND ⁽²⁾					OTHER AGLAND ⁽²⁾					TOTAL AGRICULTURAL LAND ⁽¹⁾				
	Value	Acres	Avg Value per Acre	Ann%chg AvgVal/acre	Cmltv%chg AvgVal/Acre	Value	Acres	Avg Value per Acre	Ann%chg AvgVal/acre	Cmltv%chg AvgVal/Acre	Value	Acres	Avg Value per Acre	Ann%chg AvgVal/acre	Cmltv%chg AvgVal/Acre
1997						19,323	1,932	10	--		77,205,991	461,062	167	--	--
1998						19,353	1,935	10	0.00%		77,154,256	460,902	167	0.00%	0.00%
1999						19,353	1,935	10	0.00%		90,001,031	460,827	195	16.77%	16.77%
2000						19,353	1,935	10	0.00%		97,764,293	461,019	212	8.72%	26.95%
2001						19,533	2,010	10	0.00%		102,308,375	483,217	212	0.00%	26.95%
2002						19,750	2,010	10	0.00%		109,877,280	483,803	227	7.08%	35.93%
2003	20,270	2,025	10	n/a	n/a	0	0		n/a	n/a	109,944,750	483,456	227	0.00%	35.93%
2004	20,610	2,059	10	0.10%	n/a	0	0			n/a	120,009,750	485,040	247	9.00%	48.16%
2005	20,610	2,059	10	0.00%	n/a	0	0			n/a	120,190,680	484,584	248	0.25%	48.52%
2006	20,610	2,059	10	0.00%	n/a	0	0			n/a	133,338,160	484,630	275	10.93%	64.75%
2007	20,570	2,055	10	0.00%	n/a	0	0			n/a	150,175,650	484,631	310	12.63%	85.55%

52
KEYA PAHA

FL area **11**

Rate Ann.%chg AvgVal/Acre:

6.38%

(1) Valuations on Abstracts vs CTL will vary due to different reporting dates (2) Prior to 2003, waste land data was reported with other agland; Beginning 2003 waste land isolated from other agland
source: 1997 - 2007 Abstracts Agland Assessment Level 80% for 1997-2006; 75% for 2007 NE Dept. of Revenue Property Assessment Division Prepared as of 03/01/2008

