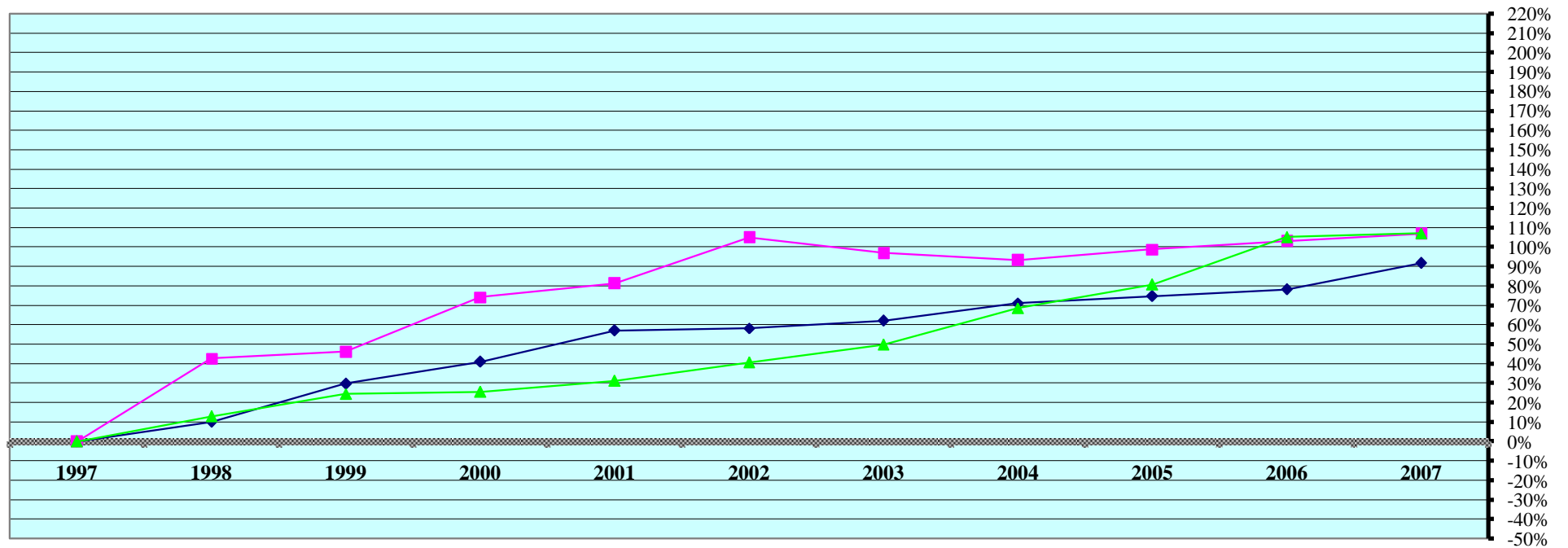


### REAL PROPERTY VALUATIONS - Cumulative %Change 1997-2007



Tax Year	Residential & Recreational <sup>(1)</sup>				Commercial & Industrial <sup>(1)</sup>				Total Agricultural Land <sup>(1)</sup>			
	Value	Amnt Value Chg	Ann.%chg	Cmltv%chg	Value	Amnt Value Chg	Ann.%chg	Cmltv%chg	Value	Amnt Value Chg	Ann.%chg	Cmltv%chg
1997	100,617,230	--	--	--	24,814,195	--	--	--	380,922,980	--	--	--
1998	110,806,390	10,189,160	10.13%	10.13%	35,428,465	10,614,270	42.77%	42.77%	430,537,960	49,614,980	13.02%	13.02%
1999	130,564,585	19,758,195	17.83%	29.76%	36,265,631	837,166	2.36%	46.15%	474,157,160	43,619,200	10.13%	24.48%
2000	141,947,890	11,383,305	8.72%	41.08%	43,251,975	6,986,344	19.26%	74.30%	478,455,375	4,298,215	0.91%	25.60%
2001	158,081,725	16,133,835	11.37%	57.11%	45,003,870	1,751,895	4.05%	81.36%	499,902,720	21,447,345	4.48%	31.23%
2002	159,161,000	1,079,275	0.68%	58.18%	50,849,165	5,845,295	12.99%	104.92%	536,111,135	36,208,415	7.24%	40.74%
2003	163,123,085	3,962,085	2.49%	62.12%	48,854,815	-1,994,350	-3.92%	96.88%	570,924,270	34,813,135	6.49%	49.88%
2004	172,139,815	9,016,730	5.53%	71.08%	47,974,430	-880,385	-1.80%	93.33%	642,139,955	71,215,685	12.47%	68.57%
2005	175,799,695	3,659,880	2.13%	74.72%	49,355,860	1,381,430	2.88%	98.90%	688,302,355	46,162,400	7.19%	80.69%
2006	179,327,665	3,527,970	2.01%	78.23%	50,400,175	1,044,315	2.12%	103.11%	781,314,155	93,011,800	13.51%	105.11%
2007	192,879,205	13,551,540	7.56%	91.70%	51,334,170	933,995	1.85%	106.87%	788,740,535	7,426,380	0.95%	107.06%

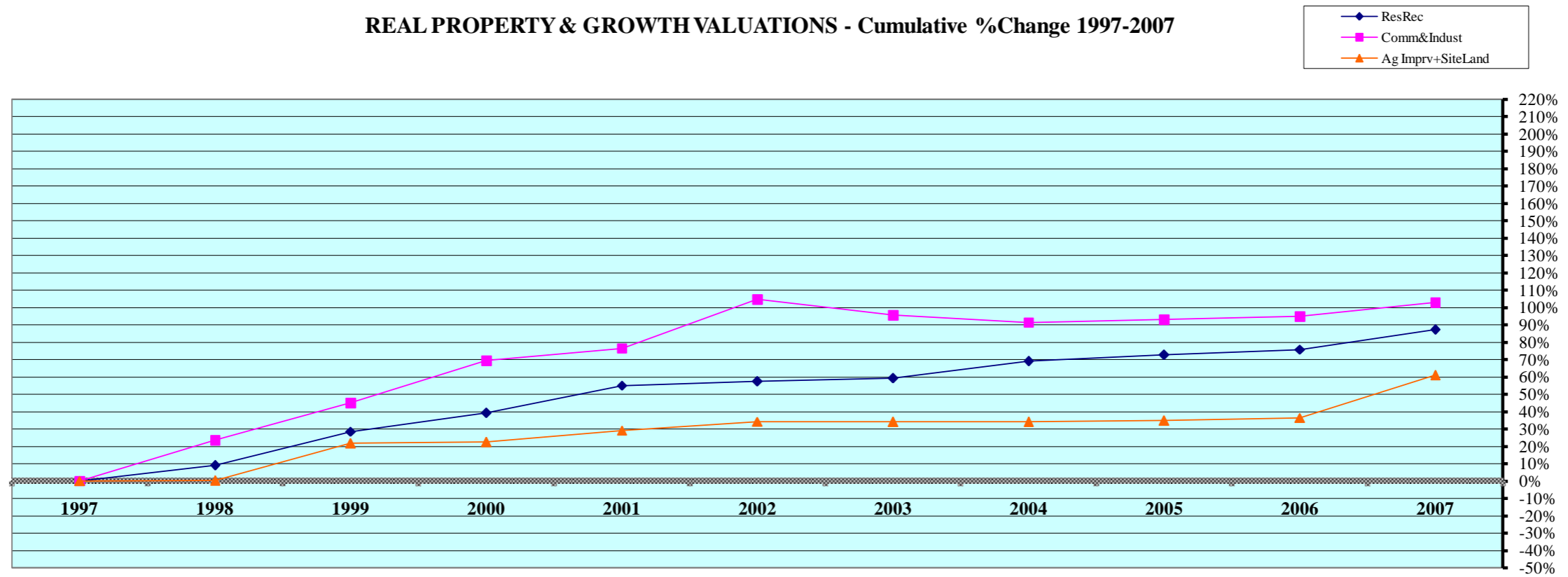
Rate Ann. %chg:      Resid & Rec. 6.72%      Comm & Indust 7.54%      Agric. Land 7.55%

Cnty# 45  
 County HOLT

FL area 11

(1) Resid. & Recreat. excludes agdwell & farm homesite land; Comm. & Indust. excludes minerals; Agland includes irrigated, dry, grass, waste, & other agland, excludes farmsite land.  
 Source: 1997 - 2007 Certificate of Taxes Levied Reports CTL      NE Dept. of Revenue Property Assessment Division      Prepared as of 03/01/2008

**REAL PROPERTY & GROWTH VALUATIONS - Cumulative %Change 1997-2007**



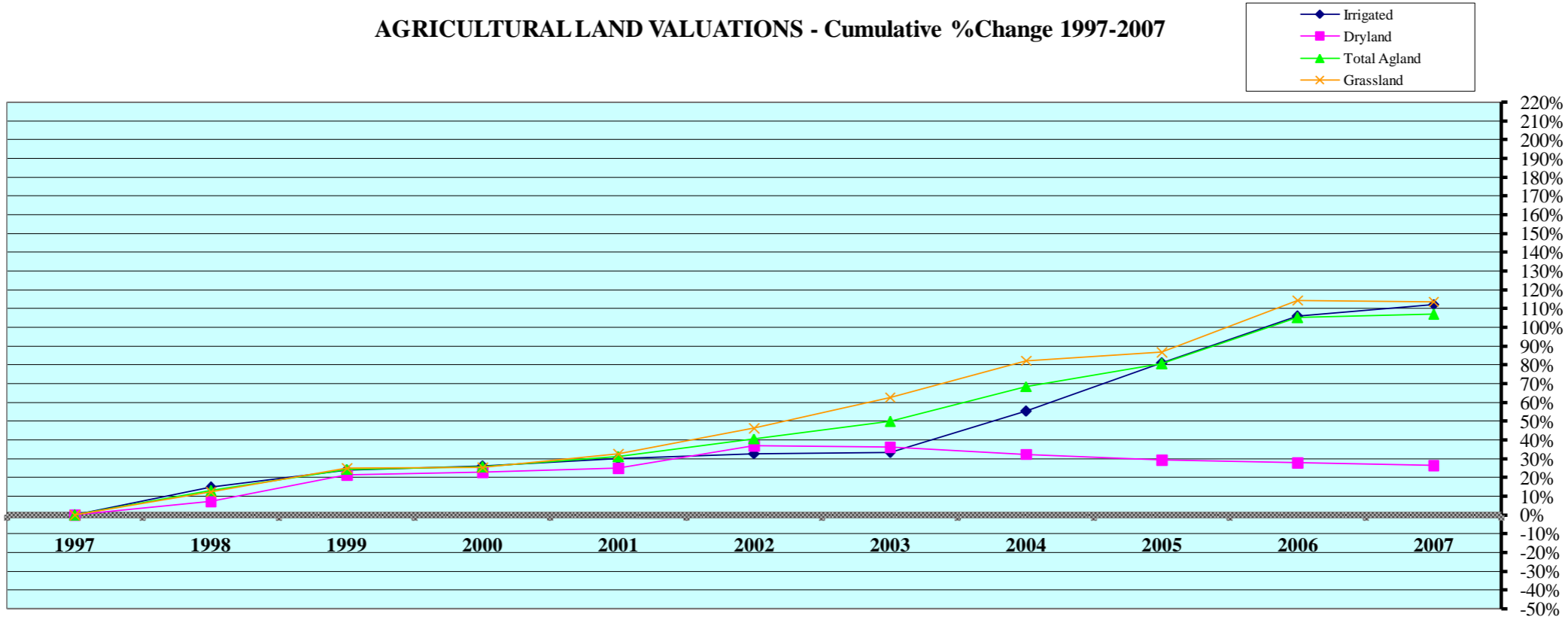
Tax Year	Residential & Recreational <sup>(1)</sup>						Commercial & Industrial <sup>(1)</sup>					
	Value	Growth Value	% growth of value	Value Exclud. Growth	Ann.%chg w/o grwth	Cmltv%chg w/o grwth	Value	Growth Value	% growth of value	Value Exclud. Growth	Ann.%chg w/o grwth	Cmltv%chg w/o grwth
1997	100,617,230	495,280	0.49%	100,121,950	--	--	24,814,195	181,975	0.73%	24,632,220	--	--
1998	110,806,390	1,199,270	1.08%	109,607,120	8.93%	8.93%	35,428,465	4,812,320	13.58%	30,616,145	23.38%	23.38%
1999	130,564,585	1,376,625	1.05%	129,187,960	16.59%	28.40%	36,265,631	302,010	0.83%	35,963,621	1.51%	44.93%
2000	141,947,890	1,870,385	1.32%	140,077,505	7.29%	39.22%	43,251,975	1,197,305	2.77%	42,054,670	15.96%	69.48%
2001	158,081,725	2,096,180	1.33%	155,985,545	9.89%	55.03%	45,003,870	1,222,875	2.72%	43,780,995	1.22%	76.44%
2002	159,161,000	894,760	0.56%	158,266,240	0.12%	57.30%	50,849,165	37,790	0.07%	50,811,375	12.90%	104.77%
2003	163,123,085	2,975,395	1.82%	160,147,690	0.62%	59.17%	48,854,815	313,525	0.64%	48,541,290	-4.54%	95.62%
2004	172,139,815	2,065,720	1.20%	170,074,095	4.26%	69.03%	47,974,430	479,210	1.00%	47,495,220	-2.78%	91.40%
2005	175,799,695	2,016,464	1.15%	173,783,231	0.95%	72.72%	49,355,860	1,425,170	2.89%	47,930,690	-0.09%	93.16%
2006	179,327,665	2,535,905	1.41%	176,791,760	0.56%	75.71%	50,400,175	2,055,360	4.08%	48,344,815	-2.05%	94.83%
2007	192,879,205	4,384,315	2.27%	188,494,890	5.11%	87.34%	51,334,170	962,013	1.87%	50,372,157	-0.06%	103.00%
Rate Ann%chg	6.72%		Resid & Rec. w/o growth			5.43%	7.54%		C & I w/o growth			4.55%

Tax Year	Ag Improvements & Site Land <sup>(1)</sup>							
	Agdwell & Homesite Value	Agoutbldg & Farmsite Value	Ag Imprv+Site Total Value	Growth Value	% growth of value	Value Exclud. Growth	Ann.%chg w/o grwth	Cmltv%chg w/o grwth
1997	27,295,920	28,667,310	55,963,230	335,770	0.60%	55,627,460	--	--
1998	27,235,755	30,038,270	57,274,025	1,150,205	2.01%	56,123,820	0.29%	0.29%
1999	37,945,450	30,436,300	68,381,750	309,635	0.45%	68,072,115	18.85%	21.64%
2000	38,377,460	31,602,130	69,979,590	1,512,070	2.16%	68,467,520	0.13%	22.34%
2001	40,539,730	32,317,420	72,857,150	577,250	0.79%	72,279,900	3.29%	29.16%
2002	40,302,595	34,889,245	75,191,840	74,898	0.10%	75,116,942	3.10%	34.23%
2003	40,254,215	36,200,975	76,455,190	1,379,705	1.80%	75,075,485	-0.15%	34.15%
2004	40,889,105	36,101,400	76,990,505	1,969,632	2.56%	75,020,873	-1.88%	34.05%
2005	40,466,425	35,673,310	76,139,735	687,025	0.90%	75,452,710	-2.00%	34.83%
2006	41,329,855	36,681,020	78,010,875	1,647,285	2.11%	76,363,590	0.29%	36.45%
2007	51,483,280	40,103,155	91,586,435	1,430,590	1.56%	90,155,845	15.57%	61.10%
Rate Ann%chg	6.55%	3.41%	5.05%	Ag Imprv+Site w/o growth		3.75%		

(1) Resid. & Recreat. excludes agdwell & farm homesite land; Comm. & Indust. excludes minerals; Agland includes irrigated, dry, grass, waste & other agland, excludes farmsite land. Real Prop Growth = value attributable to new construction, additions to existing buildings, and any improvements for real property which increase the value of such property.

Sources:  
Value; 1997 - 2007 CTL  
Growth Value; 1997-2007 Abstract of Asmnt Rpt.  
NE Dept. of Revenue Property Assessment Division  
Prepared as of 03/01/2008

**AGRICULTURAL LAND VALUATIONS - Cumulative %Change 1997-2007**



Tax Year	Irrigated Land				Dryland				Grassland			
	Value	Value Chg	Ann%chg	Cmltv%chg	Value	Value Chg	Ann%chg	Cmltv%chg	Value	Value Chg	Ann%chg	Cmltv%chg
1997	147,744,055	--	--	--	28,949,925	--	--	--	203,857,645	--	--	--
1998	169,502,475	21,758,420	14.73%	14.73%	31,088,940	2,139,015	7.39%	7.39%	228,902,995	25,045,350	12.29%	12.29%
1999	182,992,210	13,489,735	7.96%	23.86%	35,163,275	4,074,335	13.11%	21.46%	254,941,240	26,038,245	11.38%	25.06%
2000	186,309,145	3,316,935	1.81%	26.10%	35,556,235	392,960	1.12%	22.82%	255,527,565	586,325	0.23%	25.35%
2001	192,292,555	5,983,410	3.21%	30.15%	36,172,050	615,815	1.73%	24.95%	270,357,970	14,830,405	5.80%	32.62%
2002	196,142,210	3,849,655	2.00%	32.76%	39,612,200	3,440,150	9.51%	36.83%	298,231,375	27,873,405	10.31%	46.29%
2003	197,004,705	862,495	0.44%	33.34%	39,438,645	-173,555	-0.44%	36.23%	331,811,525	33,580,150	11.26%	62.77%
2004	229,357,635	32,352,930	16.42%	55.24%	38,335,660	-1,102,985	-2.80%	32.42%	371,667,980	39,856,455	12.01%	82.32%
2005	267,527,185	38,169,550	16.64%	81.07%	37,424,250	-911,410	-2.38%	29.27%	380,576,720	8,908,740	2.40%	86.69%
2006	304,282,260	36,755,075	13.74%	105.95%	37,025,555	-398,695	-1.07%	27.90%	437,209,255	56,632,535	14.88%	114.47%
2007	313,601,360	9,319,100	3.06%	112.26%	36,588,415	-437,140	-1.18%	26.39%	435,751,895	-1,457,360	-0.33%	113.75%

Rate Ann.%chg: Irrigated **7.82%** Dryland **2.37%** Grassland **7.89%**

Tax Year	Waste Land <sup>(1)</sup>				Other Agland <sup>(1)</sup>				Total Agricultural			
	Value	Value Chg	Ann%chg	Cmltv%chg	Value	Value Chg	Ann%chg	Cmltv%chg	Value	Value Chg	Ann%chg	Cmltv%chg
1997	--	--	--	--	371,355	--	--	--	380,922,980	--	--	--
1998	--	--	--	--	1,043,550	672,195	181.01%	181.01%	430,537,960	49,614,980	13.02%	13.02%
1999	--	--	--	--	1,060,435	16,885	1.62%	185.56%	474,157,160	43,619,200	10.13%	24.48%
2000	--	--	--	--	1,062,430	1,995	0.19%	186.10%	478,455,375	4,298,215	0.91%	25.60%
2001	--	--	--	--	1,080,145	17,715	1.67%	190.87%	499,902,720	21,447,345	4.48%	31.23%
2002	--	--	--	--	2,125,350	1,045,205	96.77%	472.32%	536,111,135	36,208,415	7.24%	40.74%
2003	1,855,420	n/a	n/a	n/a	813,975	n/a	n/a	n/a	570,924,270	34,813,135	6.49%	49.88%
2004	1,963,205	107,785	5.81%	5.81%	815,475	1,500	0.18%	0.18%	642,139,955	71,215,685	12.47%	68.57%
2005	1,965,980	2,775	0.14%	5.96%	808,220	-7,255	-0.89%	-0.71%	688,302,355	46,162,400	7.19%	80.69%
2006	1,986,055	20,075	1.02%	7.04%	811,030	2,810	0.35%	-0.36%	781,314,155	93,011,800	13.51%	105.11%
2007	1,988,235	2,180	0.11%	7.16%	810,630	-400	-0.05%	-0.41%	788,740,535	7,426,380	0.95%	107.06%

Cnty# **45** County **HOLT** FL area **11** Rate Ann.%chg: Total Agric Land **7.55%**

(1) Prior to 2003, waste land data was reported with other agland due to CTL reporting form structure; Beginning 2003 waste land isolated from other agland.  
 Source: 1997 - 2007 Certificate of Taxes Levied Reports CTL NE Dept. of Revenue Property Assessment Division Prepared as of 03/01/2008

**AGRICULTURAL LAND - AVERAGE VALUE PER ACRE - Cumulative % Change 1997-2007 (from Abstracts)<sup>(1)</sup>**

Tax Year	IRRIGATED LAND					DRYLAND					GRASSLAND				
	Value	Acres	Avg Value per Acre	Ann%chg AvgVal/acre	Cmltv%chg AvgVal/Acre	Value	Acres	Avg Value per Acre	Ann%chg AvgVal/acre	Cmltv%chg AvgVal/Acre	Value	Acres	Avg Value per Acre	Ann%chg AvgVal/acre	Cmltv%chg AvgVal/Acre
1997	147,820,160	223,449	662	--	--	29,009,260	92,713	313	--	--	203,821,220	1,050,626	194	--	--
1998	169,925,285	224,235	758	14.50%	14.50%	31,041,240	91,786	338	7.99%	7.99%	228,758,340	1,050,487	218	12.37%	12.37%
1999	183,493,830	228,337	804	6.07%	21.45%	35,299,120	91,168	387	14.50%	23.64%	254,778,005	1,045,871	244	11.93%	25.77%
2000	186,327,320	227,857	818	1.74%	23.56%	35,645,320	90,125	396	2.33%	26.52%	255,484,105	1,046,710	244	0.00%	25.77%
2001	191,868,260	234,145	819	0.12%	23.72%	36,398,130	91,722	397	0.25%	26.84%	269,821,815	1,106,992	244	0.00%	25.77%
2002	196,306,705	235,189	835	1.95%	26.13%	39,692,975	90,774	437	10.08%	39.62%	298,247,880	1,109,149	269	10.25%	38.66%
2003	197,135,255	236,271	834	-0.12%	25.98%	39,734,920	90,053	441	0.92%	40.89%	331,647,010	1,108,388	299	11.15%	54.12%
2004	229,535,365	240,326	955	14.52%	44.28%	38,334,420	73,796	519	17.79%	65.96%	371,566,325	1,119,016	332	11.05%	71.16%
2005	268,230,990	244,059	1,099	15.07%	66.02%	37,416,100	71,863	521	0.23%	66.35%	380,960,095	1,117,007	341	2.71%	75.80%
2006	305,041,400	250,042	1,220	11.00%	84.28%	37,122,600	70,249	528	1.49%	68.83%	437,282,200	1,112,545	393	15.24%	102.60%
2007	314,035,915	252,776	1,242	1.83%	87.67%	36,537,905	69,143	528	0.00%	68.83%	436,276,510	1,110,131	393	-0.01%	102.58%

Rate Ann.%chg AvgVal/Acre:

**6.50%**

**5.38%**

**7.31%**

Tax Year	WASTE LAND <sup>(2)</sup>					OTHER AGLAND <sup>(2)</sup>					TOTAL AGRICULTURAL LAND <sup>(1)</sup>				
	Value	Acres	Avg Value per Acre	Ann%chg AvgVal/acre	Cmltv%chg AvgVal/Acre	Value	Acres	Avg Value per Acre	Ann%chg AvgVal/acre	Cmltv%chg AvgVal/Acre	Value	Acres	Avg Value per Acre	Ann%chg AvgVal/acre	Cmltv%chg AvgVal/Acre
1997						370,880	66,720	6	--		381,021,520	1,433,508	266	--	--
1998						1,039,125	66,789	16	166.67%		430,763,990	1,433,297	301	13.16%	13.16%
1999						1,060,525	68,170	16	0.00%		474,631,480	1,433,545	331	9.97%	24.44%
2000						1,060,785	68,234	16	0.00%		478,517,530	1,432,926	334	0.91%	25.56%
2001						1,119,850	71,986	16	0.00%		499,208,055	1,504,845	332	-0.60%	24.81%
2002						2,119,775	69,357	31	93.75%		536,367,335	1,504,469	357	7.53%	34.21%
2003	1,841,915	61,437	30	n/a	n/a	811,495	8,115	100	n/a	n/a	571,170,595	1,504,264	380	6.44%	42.86%
2004	1,957,505	62,488	31	4.42%	n/a	816,870	8,161	100	0.10%	n/a	642,210,485	1,503,786	427	12.38%	60.55%
2005	1,963,060	62,608	31	0.09%	n/a	808,120	8,100	100	-0.33%	n/a	689,378,365	1,503,636	458	7.36%	72.36%
2006	1,979,875	62,623	32	0.83%	n/a	806,430	8,085	100	-0.03%	n/a	782,232,505	1,503,544	520	13.48%	95.59%
2007	1,987,395	62,947	32	-0.14%	n/a	809,830	8,121	100	-0.02%	n/a	789,647,555	1,503,118	525	0.98%	97.50%

**45**  
**HOLT**

FL area **11**

Rate Ann.%chg AvgVal/Acre:

**7.04%**

(1) Valuations on Abstracts vs CTL will vary due to different reporting dates (2) Prior to 2003, waste land data was reported with other agland; Beginning 2003 waste land isolated from other agland  
source: 1997 - 2007 Abstracts Agland Assessment Level 80% for 1997-2006; 75% for 2007 NE Dept. of Revenue Property Assessment Division Prepared as of 03/01/2008

**2007 County and Municipal Valuations by Property Type**

Pop.	County:	Personal Prop	StateAsd PP	StateAsdReal	Residential	Commercial	Industrial	Recreation	Agland	Agdwell&HS	AgImprv&FS	Minerals	Total Value
11,551	<b>HOLT</b>	75,804,663	5,445,127	1,434,212	192,879,205	45,372,965	5,961,205	0	788,740,535	51,483,280	40,103,155	0	1,207,224,347
<i>cnty sector value % of total value:</i>		6.28%	0.45%	0.12%	15.98%	3.76%	0.49%		65.34%	4.26%	3.32%		100.00%
Pop.	Municipality:	Personal Prop	StateAsd PP	StateAsd Real	Residential	Commercial	Industrial	Recreation	Agland	Agdwell&HS	AgImprv&FS	Minerals	Total Value
1,244	<b>ATKINSON</b>	2,496,861	542,813	67,189	25,431,115	7,006,780	101,440	0	8,740	0	0	0	35,654,938
10.77%	<i>%sector of county sector</i>	3.29%	9.97%	4.68%	13.18%	15.44%	1.70%		0.00%				2.95%
	<i>%sector of municipality</i>	7.00%	1.52%	0.19%	71.33%	19.65%	0.28%		0.02%				100.00%
333	<b>CHAMBERS</b>	138,282	114,501	12,982	5,907,810	705,185	0	0	144,535	4,645	575	0	7,028,515
2.88%	<i>%sector of county sector</i>	0.18%	2.10%	0.91%	3.06%	1.55%			0.02%	0.01%	0.00%		0.58%
	<i>%sector of municipality</i>	1.97%	1.63%	0.18%	84.05%	10.03%			2.06%	0.07%	0.01%		100.00%
77	<b>EMMET</b>	39,408	471	95	884,940	339,755	0	0	0	0	0	0	1,264,669
0.67%	<i>%sector of county sector</i>	0.05%	0.01%	0.01%	0.46%	0.75%							0.10%
	<i>%sector of municipality</i>	3.12%	0.04%	0.01%	69.97%	26.87%							100.00%
433	<b>EWING</b>	338,183	110,264	12,822	5,760,160	855,800	0	0	0	0	0	0	7,077,229
3.75%	<i>%sector of county sector</i>	0.45%	2.03%	0.89%	2.99%	1.89%							0.59%
	<i>%sector of municipality</i>	4.78%	1.56%	0.18%	81.39%	12.09%							100.00%
148	<b>INMAN</b>	24,037	13,636	4,002	1,718,605	72,640	0	0	0	0	0	0	1,832,920
1.28%	<i>%sector of county sector</i>	0.03%	0.25%	0.28%	0.89%	0.16%							0.15%
	<i>%sector of municipality</i>	1.31%	0.74%	0.22%	93.76%	3.96%							100.00%
3,733	<b>O'NEILL</b>	5,353,282	1,038,098	185,749	85,091,905	20,796,200	0	0	16,800	0	0	0	112,482,034
32.32%	<i>%sector of county sector</i>	7.06%	19.06%	12.95%	44.12%	45.83%			0.00%				9.32%
	<i>%sector of municipality</i>	4.76%	0.92%	0.17%	75.65%	18.49%			0.01%				100.00%
157	<b>PAGE</b>	101,981	45,985	25,142	2,072,190	313,950	0	0	0	0	0	0	2,559,248
1.36%	<i>%sector of county sector</i>	0.13%	0.84%	1.75%	1.07%	0.69%							0.21%
	<i>%sector of municipality</i>	3.98%	1.80%	0.98%	80.97%	12.27%							100.00%
645	<b>STUART</b>	1,591,218	10,961	138	11,448,735	2,853,260	0	0	163,410	132,345	55,160	0	16,255,227
5.58%	<i>%sector of county sector</i>	2.10%	0.20%	0.01%	5.94%	6.29%			0.02%	0.26%	0.14%		1.35%
	<i>%sector of municipality</i>	9.79%	0.07%	0.00%	70.43%	17.55%			1.01%	0.81%	0.34%		100.00%
6,770	<b>Total Municipalities</b>	10,083,252	1,876,729	308,119	138,315,460	32,943,570	101,440	0	333,485	136,990	55,735	0	184,154,780
58.61%	<i>%all municip.sect of cnty</i>	13.30%	34.47%	21.48%	71.71%	72.61%	1.70%		0.04%	0.27%	0.14%		15.25%

Cnty# **45** County **HOLT**

Sources: 2007 Certificate of Taxes Levied CTL, 2000 US Census; Dec2007 Municipality Pop. per Research Division Dept. of Revenue Property Assessment Division Prepared as of 03/01/2008  
 FL area 11