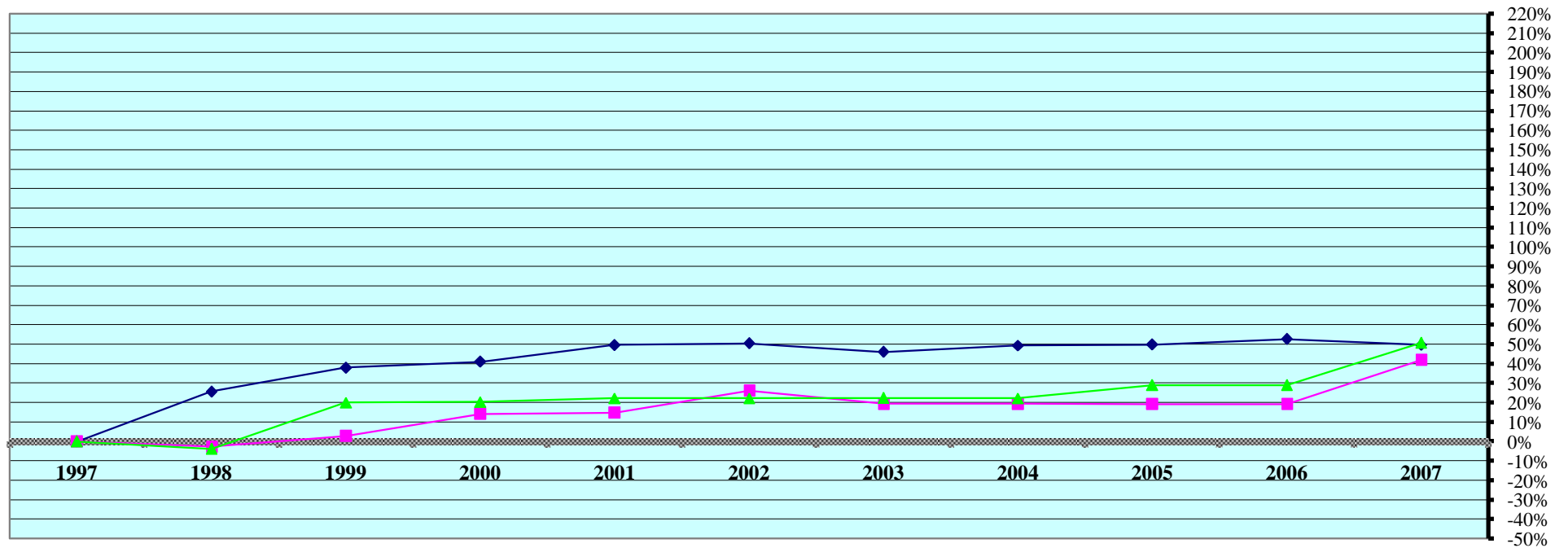


REAL PROPERTY VALUATIONS - Cumulative %Change 1997-2007



Tax Year	Residential & Recreational ⁽¹⁾				Commercial & Industrial ⁽¹⁾				Total Agricultural Land ⁽¹⁾			
	Value	Amnt Value Chg	Ann.%chg	Cmltv%chg	Value	Amnt Value Chg	Ann.%chg	Cmltv%chg	Value	Amnt Value Chg	Ann.%chg	Cmltv%chg
1997	4,514,185	--	--	--	1,080,653	--	--	--	52,297,894	--	--	--
1998	5,674,166	1,159,981	25.70%	25.70%	1,051,813	-28,840	-2.67%	-2.67%	50,323,902	-1,973,992	-3.77%	-3.77%
1999	6,228,262	554,096	9.77%	37.97%	1,111,083	59,270	5.64%	2.82%	62,816,454	12,492,552	24.82%	20.11%
2000	6,362,027	133,765	2.15%	40.93%	1,233,983	122,900	11.06%	14.19%	62,982,746	166,292	0.26%	20.43%
2001	6,753,727	391,700	6.16%	49.61%	1,241,769	7,786	0.63%	14.91%	63,973,839	991,093	1.57%	22.33%
2002	6,790,303	36,576	0.54%	50.42%	1,364,364	122,595	9.87%	26.25%	63,972,223	-1,616	0.00%	22.32%
2003	6,591,661	-198,642	-2.93%	46.02%	1,290,123	-74,241	-5.44%	19.38%	63,976,931	4,708	0.01%	22.33%
2004	6,742,747	151,086	2.29%	49.37%	1,290,146	23	0.00%	19.39%	63,961,472	-15,459	-0.02%	22.30%
2005	6,762,065	19,318	0.29%	49.80%	1,289,111	-1,035	-0.08%	19.29%	67,468,385	3,506,913	5.48%	29.01%
2006	6,892,019	129,954	1.92%	52.67%	1,288,198	-913	-0.07%	19.21%	67,462,505	-5,880	-0.01%	29.00%
2007	6,755,988	-136,031	-1.97%	49.66%	1,534,209	246,011	19.10%	41.97%	78,881,213	11,418,708	16.93%	50.83%

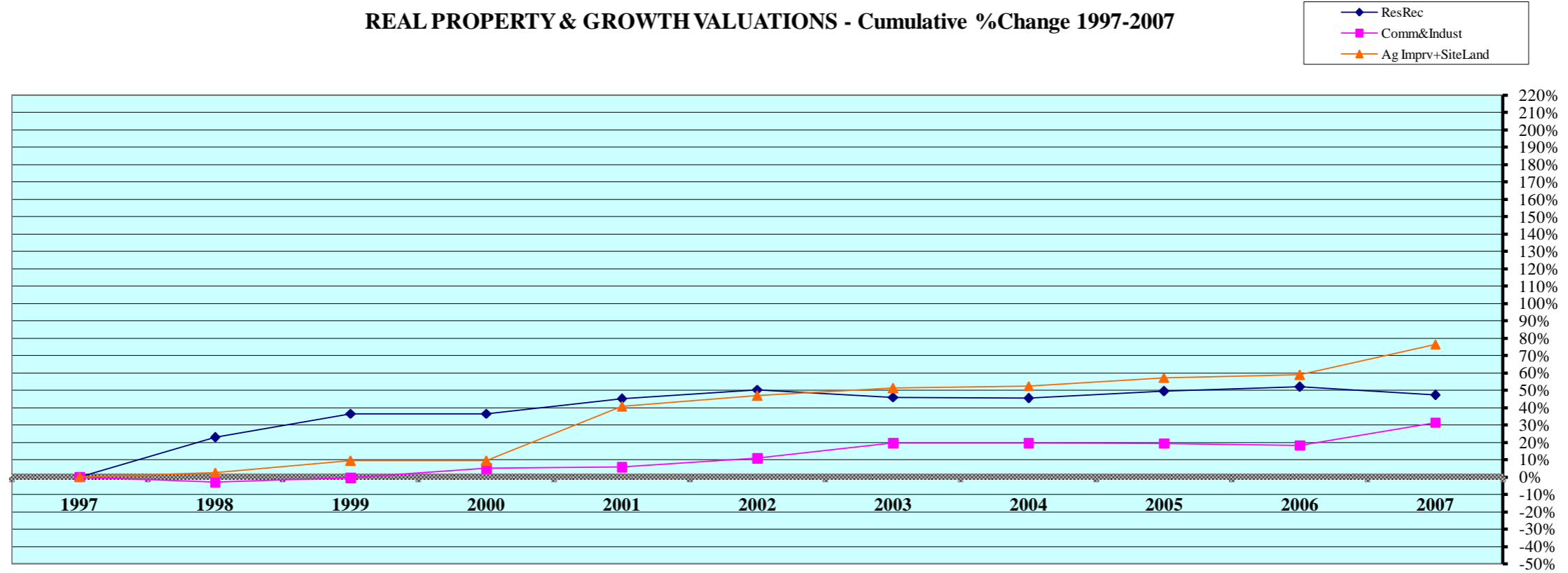
Rate Ann. %chg: Resid & Rec. **4.11%** Comm & Indust **3.57%** Agric. Land **4.20%**

Cnty# **38**
County **GRANT**

FL area **2**

(1) Resid. & Recreat. excludes agdwll & farm homesite land; Comm. & Indust. excludes minerals; Agland includes irrigated, dry, grass, waste, & other agland, excludes farmsite land.
Source: 1997 - 2007 Certificate of Taxes Levied Reports CTL NE Dept. of Revenue Property Assessment Division Prepared as of 03/01/2008

REAL PROPERTY & GROWTH VALUATIONS - Cumulative %Change 1997-2007



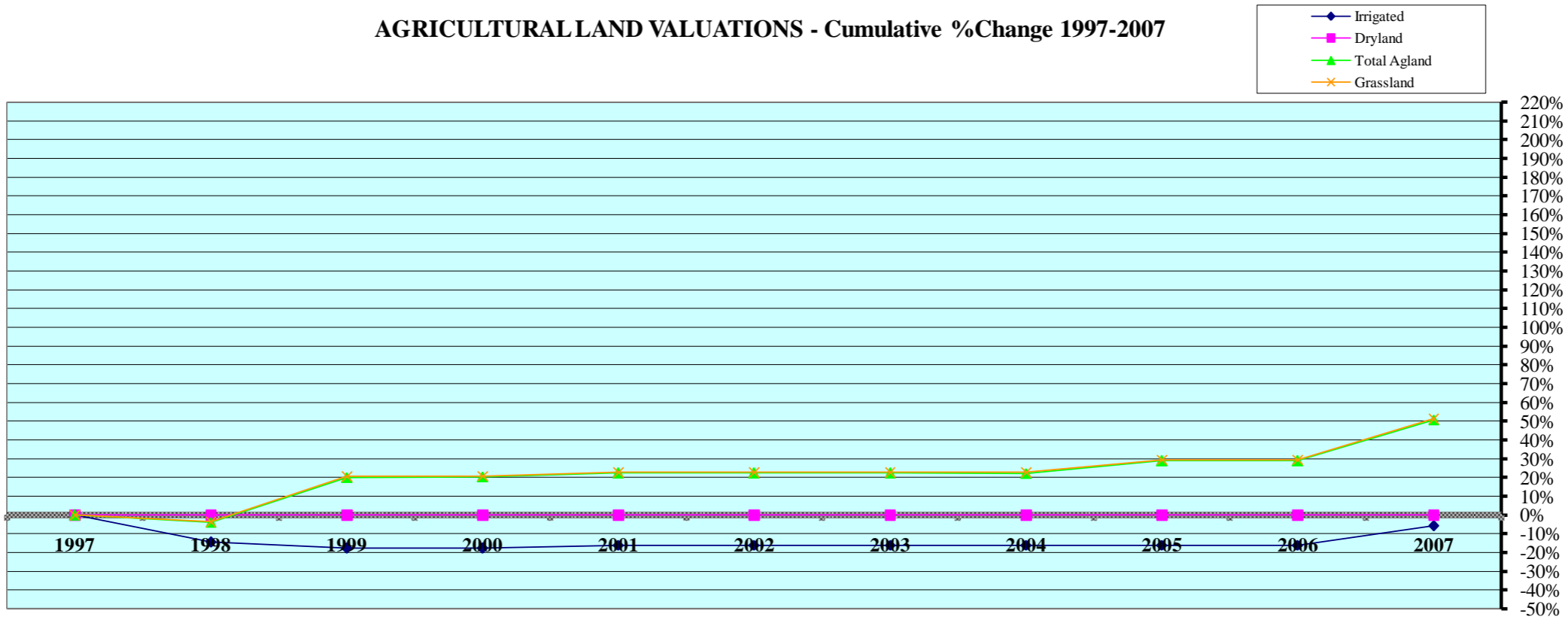
Tax Year	Residential & Recreational ⁽¹⁾						Commercial & Industrial ⁽¹⁾					
	Value	Growth Value	% growth of value	Value Exclud. Growth	Ann.%chg w/o grwth	Cmltv%chg w/o grwth	Value	Growth Value	% growth of value	Value Exclud. Growth	Ann.%chg w/o grwth	Cmltv%chg w/o grwth
1997	4,514,185	0	0.00%	4,514,185	--	--	1,080,653	0	0.00%	1,080,653	--	--
1998	5,674,166	131,911	2.32%	5,542,255	22.77%	22.77%	1,051,813	3,258	0.31%	1,048,555	-2.97%	-2.97%
1999	6,228,262	70,788	1.14%	6,157,474	8.52%	36.40%	1,111,083	36,245	3.26%	1,074,838	2.19%	-0.54%
2000	6,362,027	203,151	3.19%	6,158,876	-1.11%	36.43%	1,233,983	100,971	8.18%	1,133,012	1.97%	4.85%
2001	6,753,727	203,151	3.01%	6,550,576	2.96%	45.11%	1,241,769	100,971	8.13%	1,140,798	-7.55%	5.57%
2002	6,790,303	7,471	0.11%	6,782,832	0.43%	50.26%	1,364,364	168,399	12.34%	1,195,965	-3.69%	10.67%
2003	6,591,661	4,620	0.07%	6,587,041	-2.99%	45.92%	1,290,123	0	0.00%	1,290,123	-5.44%	19.38%
2004	6,742,747	179,081	2.66%	6,563,666	-0.42%	45.40%	1,290,146	0	0.00%	1,290,146	0.00%	19.39%
2005	6,762,065	23,129	0.34%	6,738,936	-0.06%	49.28%	1,289,111	0	0.00%	1,289,111	-0.08%	19.29%
2006	6,892,019	33,445	0.49%	6,858,574	1.43%	51.93%	1,288,198	10,540	0.82%	1,277,658	-0.89%	18.23%
2007	6,755,988	113,364	1.68%	6,642,624	-3.62%	47.15%	1,534,209	115,347	7.52%	1,418,862	10.14%	31.30%
Rate Ann%chg	4.11%		Resid & Rec. w/o growth			2.79%	3.57%		C & I w/o growth			-0.63%

Tax Year	Ag Improvements & Site Land ⁽¹⁾			Growth Value	% growth of value	Value Exclud. Growth	Ann.%chg w/o grwth	Cmltv%chg w/o grwth
	Agdwell & Homesite Value	Agoutbldg & Farmsite Value	Ag Imprv+Site Total Value					
1997	2,715,024	1,510,052	4,225,076	0	0.00%	4,225,076	--	--
1998	2,891,684	1,564,724	4,456,408	122,942	2.76%	4,333,466	2.57%	2.57%
1999	3,248,124	1,557,275	4,805,399	183,280	3.81%	4,622,119	3.72%	9.40%
2000	3,221,521	1,596,609	4,818,130	198,219	4.11%	4,619,911	-3.86%	9.35%
2001	4,426,740	1,712,906	6,139,646	198,219	3.23%	5,941,427	23.31%	40.62%
2002	4,591,565	1,778,688	6,370,253	164,140	2.58%	6,206,113	1.08%	46.89%
2003	4,764,948	1,957,132	6,722,080	338,012	5.03%	6,384,068	0.22%	51.10%
2004	4,681,110	1,988,144	6,669,254	229,377	3.44%	6,439,877	-4.20%	52.42%
2005	4,894,742	2,005,835	6,900,577	258,346	3.74%	6,642,231	-0.41%	57.21%
2006	5,084,968	2,231,676	7,316,644	606,455	8.29%	6,710,189	-2.76%	58.82%
2007	5,346,301	2,419,348	7,765,649	309,028	3.98%	7,456,621	1.91%	76.48%
Rate Ann%chg	7.01%	4.83%	6.28%	Ag Imprv+Site w/o growth		2.16%		

(1) Resid. & Recreat. excludes agdwell & farm homesite land; Comm. & Indust. excludes minerals; Agland includes irrigated, dry, grass, waste & other agland, excludes farmsite land. Real Prop Growth = value attributable to new construction, additions to existing buildings, and any improvements for real property which increase the value of such property.

Sources:
Value; 1997 - 2007 CTL
Growth Value; 1997-2007 Abstract of Asmnt Rpt.
NE Dept. of Revenue Property Assessment Division
Prepared as of 03/01/2008

AGRICULTURAL LAND VALUATIONS - Cumulative %Change 1997-2007



Tax Year	Irrigated Land				Dryland				Grassland			
	Value	Value Chg	Ann%chg	Cmltv%chg	Value	Value Chg	Ann%chg	Cmltv%chg	Value	Value Chg	Ann%chg	Cmltv%chg
1997	646,120	--	--	--	0	--	--	--	51,605,068	--	--	--
1998	553,316	-92,804	-14.36%	-14.36%	0	0			49,723,912	-1,881,156	-3.65%	-3.65%
1999	532,671	-20,645	-3.73%	-17.56%	0	0			62,190,371	12,466,459	25.07%	20.51%
2000	532,671	0	0.00%	-17.56%	0	0			62,357,266	166,895	0.27%	20.84%
2001	542,291	9,620	1.81%	-16.07%	0	0			63,336,426	979,160	1.57%	22.73%
2002	542,291	0	0.00%	-16.07%	0	0			63,334,810	-1,616	0.00%	22.73%
2003	542,291	0	0.00%	-16.07%	0	0			63,339,518	4,708	0.01%	22.74%
2004	542,291	0	0.00%	-16.07%	0	0			63,325,349	-14,169	-0.02%	22.71%
2005	542,291	0	0.00%	-16.07%	0	0			66,832,262	3,506,913	5.54%	29.51%
2006	542,291	0	0.00%	-16.07%	0	0			66,826,382	-5,880	-0.01%	29.50%
2007	608,793	66,502	12.26%	-5.78%	0	0			78,178,580	11,352,198	16.99%	51.49%

Rate Ann.%chg: Irrigated Dryland Grassland

Tax Year	Waste Land ⁽¹⁾				Other Agland ⁽¹⁾				Total Agricultural			
	Value	Value Chg	Ann%chg	Cmltv%chg	Value	Value Chg	Ann%chg	Cmltv%chg	Value	Value Chg	Ann%chg	Cmltv%chg
1997		--	--	--	46,706	--	--	--	52,297,894	--	--	--
1998		--	--	--	46,674	-32	-0.07%	-0.07%	50,323,902	-1,973,992	-3.77%	-3.77%
1999		--	--	--	93,412	46,738	100.14%	100.00%	62,816,454	12,492,552	24.82%	20.11%
2000		--	--	--	92,809	-603	-0.65%	98.71%	62,982,746	166,292	0.26%	20.43%
2001		--	--	--	95,122	2,313	2.49%	103.66%	63,973,839	991,093	1.57%	22.33%
2002		--	--	--	95,122	0	0.00%	103.66%	63,972,223	-1,616	0.00%	22.32%
2003	95,122	n/a	n/a	n/a	0	n/a	n/a	n/a	63,976,931	4,708	0.01%	22.33%
2004	93,832	-1,290	-1.36%	-1.36%	0	0			63,961,472	-15,459	-0.02%	22.30%
2005	93,832	0	0.00%	-1.36%	0	0			67,468,385	3,506,913	5.48%	29.01%
2006	93,832	0	0.00%	-1.36%	0	0			67,462,505	-5,880	-0.01%	29.00%
2007	93,840	8	0.01%	-1.35%	0	0			78,881,213	11,418,708	16.93%	50.83%

Cnty# County FL area Rate Ann.%chg: Total Agric Land

(1) Prior to 2003, waste land data was reported with other agland due to CTL reporting form structure; Beginning 2003 waste land isolated from other agland.

AGRICULTURAL LAND - AVERAGE VALUE PER ACRE - Cumulative % Change 1997-2007 (from Abstracts)⁽¹⁾

Tax Year	IRRIGATED LAND					DRYLAND					GRASSLAND				
	Value	Acres	Avg Value per Acre	Ann%chg AvgVal/acre	Cmltv%chg AvgVal/Acre	Value	Acres	Avg Value per Acre	Ann%chg AvgVal/acre	Cmltv%chg AvgVal/Acre	Value	Acres	Avg Value per Acre	Ann%chg AvgVal/acre	Cmltv%chg AvgVal/Acre
1997	669,170	2,249	298	--	--	0	0		--	--	51,595,605	466,241	111	--	--
1998	553,316	2,249	246	-17.45%	-17.45%	0	0				49,753,498	466,453	107	-3.60%	-3.60%
1999	532,671	2,161	246	0.00%	-17.45%	0	0				62,191,877	466,891	133	24.30%	19.82%
2000	532,671	2,161	246	0.00%	-17.45%	0	0				62,309,407	467,791	133	0.00%	19.82%
2001	542,291	2,206	246	0.00%	-17.45%	0	0				63,308,591	485,861	130	-2.26%	17.12%
2002	542,291	2,206	246	0.00%	-17.45%	0	0				63,334,810	486,068	130	0.00%	17.12%
2003	542,291	2,206	246	0.00%	-17.45%	0	0				63,339,431	486,105	130	0.00%	17.12%
2004	542,291	2,206	246	-0.08%	-17.52%	0	0				63,327,080	486,013	130	0.23%	17.39%
2005	542,291	2,206	246	0.00%	-17.52%	0	0				66,832,547	486,000	138	5.54%	23.89%
2006	542,291	2,206	246	0.00%	-17.52%	0	0				66,826,382	485,955	138	0.00%	23.89%
2007	608,793	2,449	249	1.12%	-16.59%	0	0				78,179,810	485,794	161	17.03%	44.98%

Rate Ann.%chg AvgVal/Acre:

-1.80%

3.78%

Tax Year	WASTE LAND ⁽²⁾					OTHER AGLAND ⁽²⁾					TOTAL AGRICULTURAL LAND ⁽¹⁾				
	Value	Acres	Avg Value per Acre	Ann%chg AvgVal/acre	Cmltv%chg AvgVal/Acre	Value	Acres	Avg Value per Acre	Ann%chg AvgVal/acre	Cmltv%chg AvgVal/Acre	Value	Acres	Avg Value per Acre	Ann%chg AvgVal/acre	Cmltv%chg AvgVal/Acre
1997						46,706	9,341	5	--		52,311,481	477,831	109	--	--
1998						46,706	9,341	5	0.00%		50,353,520	478,043	105	-3.67%	-3.67%
1999						93,402	9,340	10	100.00%		62,817,950	478,392	131	24.76%	20.18%
2000						93,472	9,347	10	0.00%		62,935,550	479,299	131	0.00%	20.18%
2001						95,122	9,512	10	0.00%		63,946,004	497,580	129	-1.53%	18.35%
2002						95,122	9,512	10	0.00%		63,972,223	497,786	129	0.00%	18.35%
2003	95,122	9,512	10	n/a	n/a	0	0		n/a	n/a	63,976,844	497,824	129	0.00%	18.35%
2004	93,832	9,383	10	0.00%	n/a	0	0			n/a	63,963,203	497,602	129	-0.35%	17.93%
2005	93,832	9,383	10	0.00%	n/a	0	0			n/a	67,468,670	497,589	136	5.48%	24.40%
2006	93,832	9,383	10	0.00%	n/a	0	0			n/a	67,462,505	497,545	136	0.00%	24.40%
2007	93,837	9,384	10	0.00%	n/a	0	0			n/a	78,882,440	497,627	159	16.91%	45.43%

38
GRANT

FL area

Rate Ann.%chg AvgVal/Acre:

3.82%

(1) Valuations on Abstracts vs CTL will vary due to different reporting dates (2) Prior to 2003, waste land data was reported with other agland; Beginning 2003 waste land isolated from other agland
source: 1997 - 2007 Abstracts Agland Assessment Level 80% for 1997-2006; 75% for 2007 NE Dept. of Revenue Property Assessment Division Prepared as of 03/01/2008

