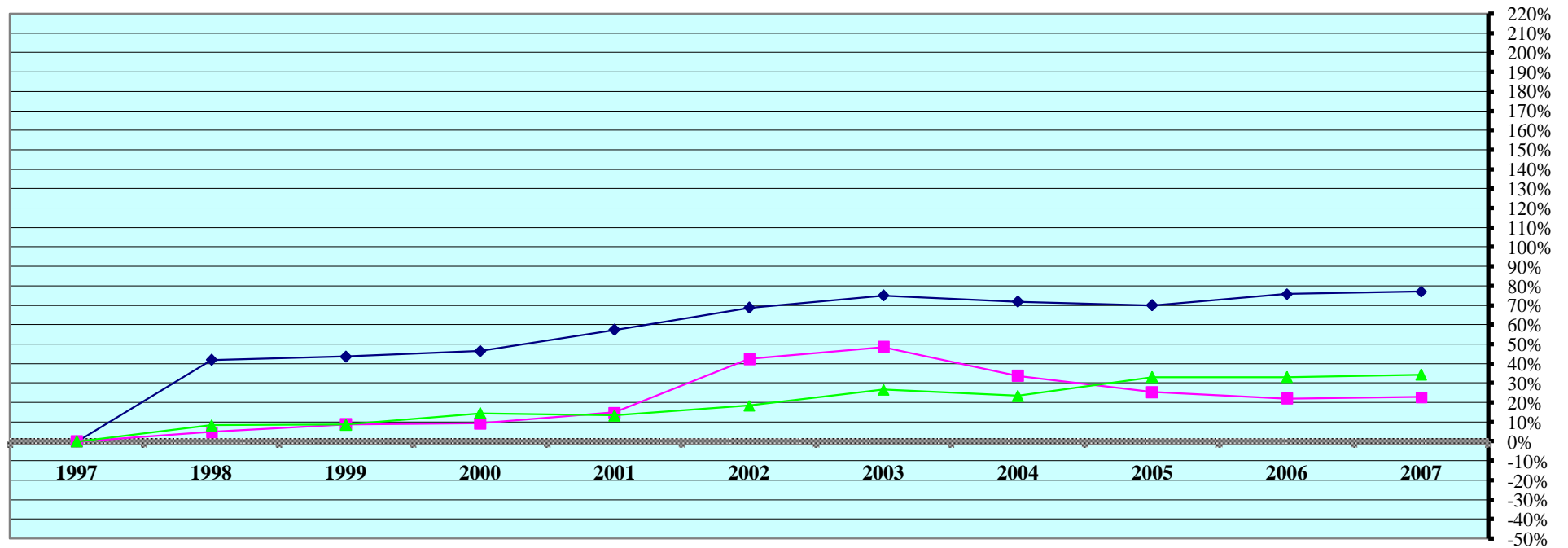


REAL PROPERTY VALUATIONS - Cumulative %Change 1997-2007



Tax Year	Residential & Recreational ⁽¹⁾				Commercial & Industrial ⁽¹⁾				Total Agricultural Land ⁽¹⁾			
	Value	Amnt Value Chg	Ann.%chg	Cmltv%chg	Value	Amnt Value Chg	Ann.%chg	Cmltv%chg	Value	Amnt Value Chg	Ann.%chg	Cmltv%chg
1997	24,775,227	--	--	--	10,875,624	--	--	--	143,382,085	--	--	--
1998	35,150,107	10,374,880	41.88%	41.88%	11,411,988	536,364	4.93%	4.93%	155,306,148	11,924,063	8.32%	8.32%
1999	35,585,896	435,789	1.24%	43.63%	11,834,942	422,954	3.71%	8.82%	155,738,768	432,620	0.28%	8.62%
2000	36,287,959	702,063	1.97%	46.47%	11,883,873	48,931	0.41%	9.27%	164,134,713	8,395,945	5.39%	14.47%
2001	38,985,130	2,697,171	7.43%	57.36%	12,508,151	624,278	5.25%	15.01%	162,549,787	-1,584,926	-0.97%	13.37%
2002	41,784,488	2,799,358	7.18%	68.65%	15,485,088	2,976,937	23.80%	42.38%	169,965,652	7,415,865	4.56%	18.54%
2003	43,349,993	1,565,505	3.75%	74.97%	16,156,927	671,839	4.34%	48.56%	181,598,291	11,632,639	6.84%	26.65%
2004	42,597,152	-752,841	-1.74%	71.93%	14,540,268	-1,616,659	-10.01%	33.70%	177,000,772	-4,597,519	-2.53%	23.45%
2005	42,126,994	-470,158	-1.10%	70.04%	13,630,063	-910,205	-6.26%	25.33%	190,887,019	13,886,247	7.85%	33.13%
2006	43,560,740	1,433,746	3.40%	75.82%	13,275,400	-354,663	-2.60%	22.07%	190,804,186	-82,833	-0.04%	33.07%
2007	43,887,007	326,267	0.75%	77.14%	13,363,140	87,740	0.66%	22.87%	192,616,927	1,812,741	0.95%	34.34%

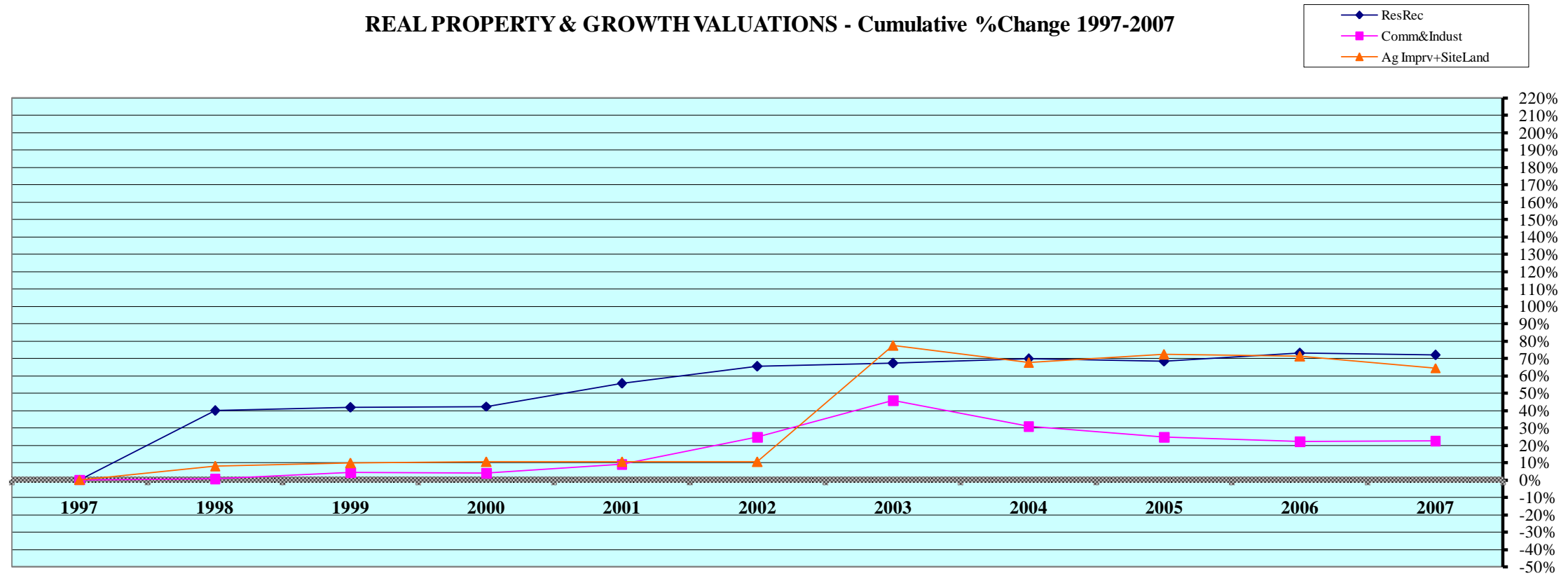
Rate Ann. %chg: Resid & Rec. **5.88%** Comm & Indust **2.08%** Agric. Land **3.00%**

Cnty# **32**
County **FRONTIER**

FL area **10**

(1) Resid. & Recreat. excludes agdwll & farm homesite land; Comm. & Indust. excludes minerals; Agland includes irrigated, dry, grass, waste, & other agland, excludes farmsite land.
Source: 1997 - 2007 Certificate of Taxes Levied Reports CTL NE Dept. of Revenue Property Assessment Division Prepared as of 03/01/2008

REAL PROPERTY & GROWTH VALUATIONS - Cumulative %Change 1997-2007



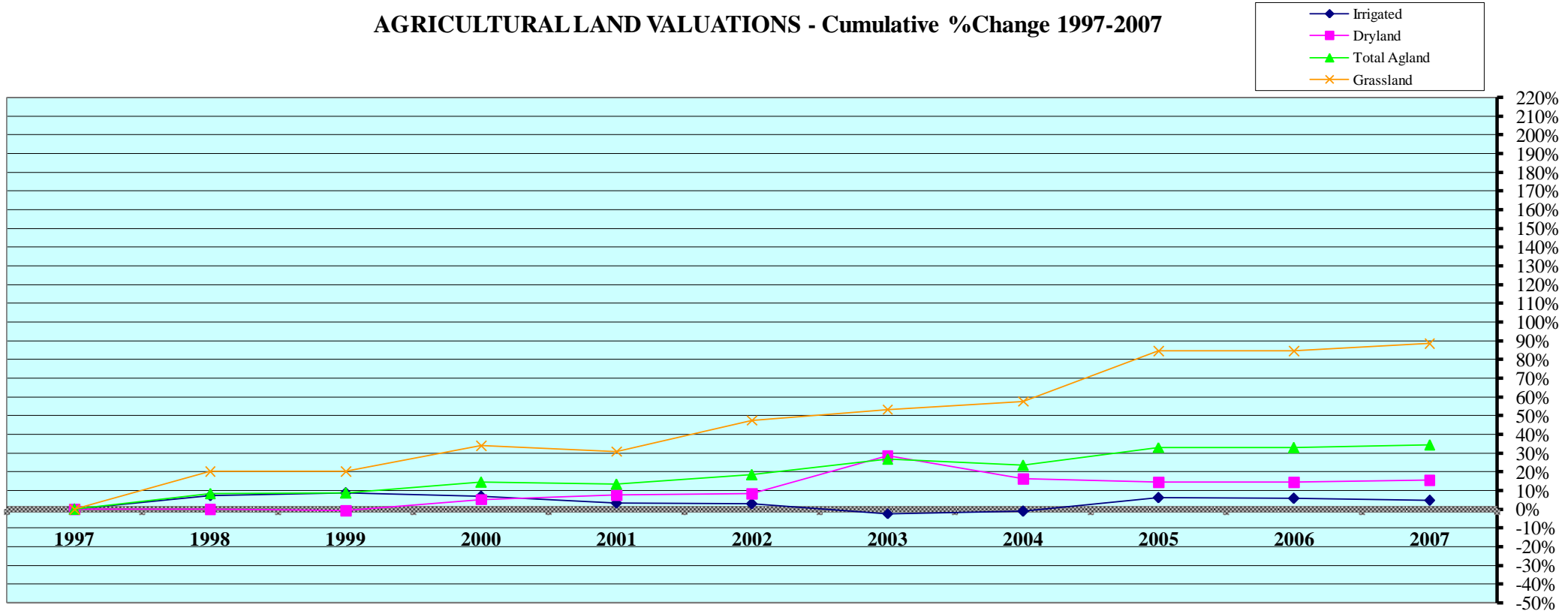
Tax Year	Residential & Recreational ⁽¹⁾						Commercial & Industrial ⁽¹⁾					
	Value	Growth Value	% growth of value	Value Exclud. Growth	Ann.%chg w/o grwth	Cmltv%chg w/o grwth	Value	Growth Value	% growth of value	Value Exclud. Growth	Ann.%chg w/o grwth	Cmltv%chg w/o grwth
1997	24,775,227	389,078	1.57%	24,386,149	--	--	10,875,624	183,881	1.69%	10,691,743	--	--
1998	35,150,107	465,125	1.32%	34,684,982	40.00%	40.00%	11,411,988	486,060	4.26%	10,925,928	0.46%	0.46%
1999	35,585,896	507,055	1.42%	35,078,841	-0.20%	41.59%	11,834,942	510,362	4.31%	11,324,580	-0.77%	4.13%
2000	36,287,959	1,046,234	2.88%	35,241,725	-0.97%	42.25%	11,883,873	593,461	4.99%	11,290,412	-4.60%	3.81%
2001	38,985,130	444,437	1.14%	38,540,693	6.21%	55.56%	12,508,151	645,935	5.16%	11,862,216	-0.18%	9.07%
2002	41,784,488	790,520	1.89%	40,993,968	5.15%	65.46%	15,485,088	1,929,242	12.46%	13,555,846	8.38%	24.64%
2003	43,349,993	1,915,398	4.42%	41,434,595	-0.84%	67.24%	16,156,927	311,273	1.93%	15,845,654	2.33%	45.70%
2004	42,597,152	531,450	1.25%	42,065,702	-2.96%	69.79%	14,540,268	316,776	2.18%	14,223,492	-11.97%	30.78%
2005	42,126,994	404,189	0.96%	41,722,805	-2.05%	68.41%	13,630,063	71,426	0.52%	13,558,637	-6.75%	24.67%
2006	43,560,740	710,595	1.63%	42,850,145	1.72%	72.96%	13,275,400	0	0.00%	13,275,400	-2.60%	22.07%
2007	43,887,007	1,267,039	2.89%	42,619,968	-2.16%	72.03%	13,363,140	56,960	0.43%	13,306,180	0.23%	22.35%
Rate Ann%chg	5.88%		Resid & Rec. w/o growth			4.39%	2.08%		C & I w/o growth			-1.55%

Tax Year	Ag Improvements & Site Land ⁽¹⁾					Ann.%chg w/o grwth	Cmltv%chg w/o grwth
	Agdwll & Homesite Value	Agoutbldg & Farmsite Value	Ag Imprv&Site Total Value	Growth Value	% growth of value		
1997	8,067,910	11,055,554	19,123,464	886,303	4.63%	--	--
1998	9,828,043	11,232,663	21,060,706	455,117	2.16%	7.75%	7.75%
1999	9,918,364	11,324,996	21,243,360	263,064	1.24%	-0.38%	9.71%
2000	9,881,249	11,298,520	21,179,769	82,490	0.39%	-0.69%	10.32%
2001	9,825,086	11,368,227	21,193,313	101,026	0.48%	-0.41%	10.30%
2002	10,083,267	11,365,239	21,448,506	316,749	1.48%	-0.29%	10.50%
2003	21,362,831	13,303,099	34,665,930	727,474	2.10%	58.23%	77.47%
2004	20,930,882	11,136,310	32,067,192	0	0.00%	-7.50%	67.69%
2005	21,647,832	11,277,532	32,925,364	0	0.00%	2.68%	72.17%
2006	21,707,936	11,422,362	33,130,298	387,078	1.17%	-0.55%	71.22%
2007	21,639,559	10,569,499	32,209,058	758,269	2.35%	-5.07%	64.46%
Rate Ann%chg	10.37%	-0.45%	5.35%	Ag Imprv+Site w/o growth		5.38%	

(1) Resid. & Recreat. excludes agdwll & farm homesite land; Comm. & Indust. excludes minerals; Agland includes irrigated, dry, grass, waste & other agland, excludes farmsite land. Real Prop Growth = value attributable to new construction, additions to existing buildings, and any improvements for real property which increase the value of such property.

Sources:
Value; 1997 - 2007 CTL
Growth Value; 1997-2007 Abstract of Asmnt Rpt.
NE Dept. of Revenue Property Assessment Division
Prepared as of 03/01/2008

AGRICULTURAL LAND VALUATIONS - Cumulative %Change 1997-2007



Tax Year	Irrigated Land				Dryland				Grassland			
	Value	Value Chg	Ann%chg	Cmltv%chg	Value	Value Chg	Ann%chg	Cmltv%chg	Value	Value Chg	Ann%chg	Cmltv%chg
1997	44,400,750	--	--	--	55,554,120	--	--	--	43,406,875	--	--	--
1998	47,608,200	3,207,450	7.22%	7.22%	55,507,835	-46,285	-0.08%	-0.08%	52,169,773	8,762,898	20.19%	20.19%
1999	48,273,900	665,700	1.40%	8.72%	55,201,195	-306,640	-0.55%	-0.64%	52,243,333	73,560	0.14%	20.36%
2000	47,497,225	-776,675	-1.61%	6.97%	58,469,975	3,268,780	5.92%	5.25%	58,147,173	5,903,840	11.30%	33.96%
2001	45,810,765	-1,686,460	-3.55%	3.18%	59,867,175	1,397,200	2.39%	7.76%	56,851,507	-1,295,666	-2.23%	30.97%
2002	45,675,970	-134,795	-0.29%	2.87%	60,210,865	343,690	0.57%	8.38%	64,058,297	7,206,790	12.68%	47.58%
2003	43,372,270	-2,303,700	-5.04%	-2.32%	71,457,650	11,246,785	18.68%	28.63%	66,572,547	2,514,250	3.92%	53.37%
2004	43,924,520	552,250	1.27%	-1.07%	64,619,494	-6,838,156	-9.57%	16.32%	68,436,941	1,864,394	2.80%	57.66%
2005	47,150,256	3,225,736	7.34%	6.19%	63,591,134	-1,028,360	-1.59%	14.47%	80,124,814	11,687,873	17.08%	84.59%
2006	46,983,301	-166,955	-0.35%	5.82%	63,669,408	78,274	0.12%	14.61%	80,130,862	6,048	0.01%	84.60%
2007	46,476,001	-507,300	-1.08%	4.67%	64,280,666	611,258	0.96%	15.71%	81,839,765	1,708,903	2.13%	88.54%

Rate Ann.%chg: Irrigated **0.46%** Dryland **1.47%** Grassland **6.55%**

Tax Year	Waste Land ⁽¹⁾				Other Agland ⁽¹⁾				Total Agricultural			
	Value	Value Chg	Ann%chg	Cmltv%chg	Value	Value Chg	Ann%chg	Cmltv%chg	Value	Value Chg	Ann%chg	Cmltv%chg
1997		--	--	--	20,340	--	--	--	143,382,085	--	--	--
1998		--	--	--	20,340	0	0.00%	0.00%	155,306,148	11,924,063	8.32%	8.32%
1999		--	--	--	20,340	0	0.00%	0.00%	155,738,768	432,620	0.28%	8.62%
2000		--	--	--	20,340	0	0.00%	0.00%	164,134,713	8,395,945	5.39%	14.47%
2001		--	--	--	20,340	0	0.00%	0.00%	162,549,787	-1,584,926	-0.97%	13.37%
2002		--	--	--	20,520	180	0.88%	0.88%	169,965,652	7,415,865	4.56%	18.54%
2003	20,400	n/a	n/a	n/a	175,424	n/a	n/a	n/a	181,598,291	11,632,639	6.84%	26.65%
2004	19,817	-583	-2.86%	-2.86%	0	-175,424	-100.00%	-100.00%	177,000,772	-4,597,519	-2.53%	23.45%
2005	20,815	998	5.04%	2.03%	0	0		-100.00%	190,887,019	13,886,247	7.85%	33.13%
2006	20,615	-200	-0.96%	1.05%	0	0		-100.00%	190,804,186	-82,833	-0.04%	33.07%
2007	20,495	-120	-0.58%	0.47%	0	0		-100.00%	192,616,927	1,812,741	0.95%	34.34%

Cnty# **32** FL area **10** Rate Ann.%chg: Total Agric Land **3.00%**
 County **FRONTIER**

(1) Prior to 2003, waste land data was reported with other agland due to CTL reporting form structure; Beginning 2003 waste land isolated from other agland.
 Source: 1997 - 2007 Certificate of Taxes Levied Reports CTL NE Dept. of Revenue Property Assessment Division Prepared as of 03/01/2008

AGRICULTURAL LAND - AVERAGE VALUE PER ACRE - Cumulative % Change 1997-2007 (from Abstracts)⁽¹⁾

Tax Year	IRRIGATED LAND					DRYLAND					GRASSLAND				
	Value	Acres	Avg Value per Acre	Ann%chg AvgVal/acre	Cmltv%chg AvgVal/Acre	Value	Acres	Avg Value per Acre	Ann%chg AvgVal/acre	Cmltv%chg AvgVal/Acre	Value	Acres	Avg Value per Acre	Ann%chg AvgVal/acre	Cmltv%chg AvgVal/Acre
1997	44,401,505	62,081	715	--	--	55,562,000	169,346	328	--	--	43,411,510	349,650	124	--	--
1998	47,666,700	61,794	771	7.83%	7.83%	55,489,375	169,633	327	-0.30%	-0.30%	52,171,663	349,495	149	20.16%	20.16%
1999	48,315,500	62,678	771	0.00%	7.83%	55,175,600	168,708	327	0.00%	-0.30%	52,214,743	349,727	149	0.00%	20.16%
2000	47,669,130	62,673	761	-1.30%	6.43%	58,358,835	168,374	347	6.12%	5.79%	58,130,833	349,989	166	11.41%	33.87%
2001	45,881,035	63,364	724	-4.86%	1.26%	59,873,635	174,092	344	-0.86%	4.88%	56,919,102	362,443	157	-5.42%	26.61%
2002	45,720,275	63,121	724	0.00%	1.26%	59,609,700	172,359	346	0.58%	5.49%	63,360,522	358,225	177	12.74%	42.74%
2003	43,214,095	63,265	683	-5.66%	-4.48%	71,735,750	173,828	413	19.36%	25.91%	66,621,641	362,196	184	3.95%	48.39%
2004	43,215,477	70,180	616	-9.84%	-13.88%	65,003,930	167,817	387	-6.21%	18.09%	68,423,251	360,782	190	3.07%	52.95%
2005	47,173,965	75,980	621	0.83%	-13.16%	63,596,791	163,415	389	0.47%	18.65%	80,102,274	359,803	223	17.39%	79.54%
2006	47,046,859	75,797	621	-0.03%	-13.19%	63,633,709	163,487	389	0.01%	18.67%	80,132,081	359,967	223	-0.01%	79.52%
2007	46,437,906	75,103	618	-0.38%	-13.52%	64,303,176	163,571	393	1.00%	19.85%	81,841,577	360,481	227	1.99%	83.09%

Rate Ann.%chg AvgVal/Acre:

-1.44%

1.83%

6.23%

Tax Year	WASTE LAND ⁽²⁾					OTHER AGLAND ⁽²⁾					TOTAL AGRICULTURAL LAND ⁽¹⁾				
	Value	Acres	Avg Value per Acre	Ann%chg AvgVal/acre	Cmltv%chg AvgVal/Acre	Value	Acres	Avg Value per Acre	Ann%chg AvgVal/acre	Cmltv%chg AvgVal/Acre	Value	Acres	Avg Value per Acre	Ann%chg AvgVal/acre	Cmltv%chg AvgVal/Acre
1997						20,340	1,017	20	--		143,395,355	582,094	246	--	--
1998						20,340	1,017	20	0.00%		155,348,078	581,939	267	8.54%	8.54%
1999						20,340	1,017	20	0.00%		155,726,183	582,130	268	0.37%	8.94%
2000						20,340	1,017	20	0.00%		164,179,138	582,053	282	5.22%	14.63%
2001						20,340	1,017	20	0.00%		162,694,112	600,916	271	-3.90%	10.16%
2002						20,340	1,017	20	0.00%		168,710,837	594,722	284	4.80%	15.45%
2003	20,280	1,014	20	n/a	n/a	0	0		n/a	n/a	181,591,766	600,307	302	6.34%	22.76%
2004	19,380	1,020	19	-5.00%	n/a	0	0			n/a	176,662,038	599,799	295	-2.47%	19.73%
2005	20,935	1,047	20	5.26%	n/a	0	0			n/a	190,893,965	600,244	318	7.98%	29.28%
2006	20,615	1,031	20	0.00%	n/a	0	0			n/a	190,833,264	600,282	318	-0.04%	29.23%
2007	20,495	1,025	20	0.00%	n/a	0	0			n/a	192,603,154	600,179	321	0.94%	30.45%

32
FRONTIER

FL area 10

Rate Ann.%chg AvgVal/Acre:

2.69%

(1) Valuations on Abstracts vs CTL will vary due to different reporting dates (2) Prior to 2003, waste land data was reported with other agland; Beginning 2003 waste land isolated from other agland
source: 1997 - 2007 Abstracts Agland Assessment Level 80% for 1997-2006; 75% for 2007 NE Dept. of Revenue Property Assessment Division Prepared as of 03/01/2008

2007 County and Municipal Valuations by Property Type

Pop.	County:	Personal Prop	StateAsd PP	StateAsdReal	Residential	Commercial	Industrial	Recreation	Agland	Agdwell&HS	AgImprv&FS	Minerals	Total Value
3,099	FRONTIER	16,844,256	7,087,174	1,637,135	40,365,123	13,363,140	0	3,521,884	192,616,927	21,639,559	10,569,499	2,560,930	310,205,627
<i>cnty sector value % of total value:</i>		5.43%	2.28%	0.53%	13.01%	4.31%		1.14%	62.09%	6.98%	3.41%	0.83%	100.00%
Pop.	Municipality:	Personal Prop	StateAsd PP	StateAsd Real	Residential	Commercial	Industrial	Recreation	Agland	Agdwell&HS	AgImprv&FS	Minerals	Total Value
832	CURTIS	471,411	1,442,928	158,830	14,792,848	3,128,366	0	0	25,610	0	0	0	20,019,993
26.85%	<i>%sector of county sector</i>	2.80%	20.36%	9.70%	36.65%	23.41%			0.01%				6.45%
	<i>%sector of municipality</i>	2.35%	7.21%	0.79%	73.89%	15.63%			0.13%				100.00%
464	EUSTIS	595,018	263,953	28,143	11,235,365	2,624,064	0	0	0	18,454	0	0	14,764,997
14.97%	<i>%sector of county sector</i>	3.53%	3.72%	1.72%	27.83%	19.64%				0.09%			4.76%
	<i>%sector of municipality</i>	4.03%	1.79%	0.19%	76.09%	17.77%				0.12%			100.00%
331	MAYWOOD	158,149	208,318	50,407	5,520,889	3,460,844	0	0	14,380	0	10,140	0	9,423,127
10.68%	<i>%sector of county sector</i>	0.94%	2.94%	3.08%	13.68%	25.90%			0.01%		0.10%		3.04%
	<i>%sector of municipality</i>	1.68%	2.21%	0.53%	58.59%	36.73%			0.15%		0.11%		100.00%
52	MOOREFIELD	16,483	20,058	24,995	693,994	361,320	0	0	13,600	0	0	0	1,130,450
1.68%	<i>%sector of county sector</i>	0.10%	0.28%	1.53%	1.72%	2.70%			0.01%				0.36%
	<i>%sector of municipality</i>	1.46%	1.77%	2.21%	61.39%	31.96%			1.20%				100.00%
36	STOCKVILLE	2,607	36,736	3,145	383,991	46,687	0	0	21,050	40,919	0	0	535,135
1.16%	<i>%sector of county sector</i>	0.02%	0.52%	0.19%	0.95%	0.35%			0.01%	0.19%			0.17%
	<i>%sector of municipality</i>	0.49%	6.86%	0.59%	71.76%	8.72%			3.93%	7.65%			100.00%
1,715	Total Municipalities	1,243,668	1,971,993	265,520	32,627,087	9,621,281	0	0	74,640	59,373	10,140	0	45,873,702
55.34%	<i>%all municip.sect of cnty</i>	7.38%	27.82%	16.22%	80.83%	72.00%			0.04%	0.27%	0.10%		14.79%

Cnty#	County
32	FRONTIER

Sources: 2007 Certificate of Taxes Levied CTL, 2000 US Census; Dec2007 Municipality Pop. per Research Division Dept. of Revenue Property Assessment Division Prepared as of 03/01/2008
 FL area 10