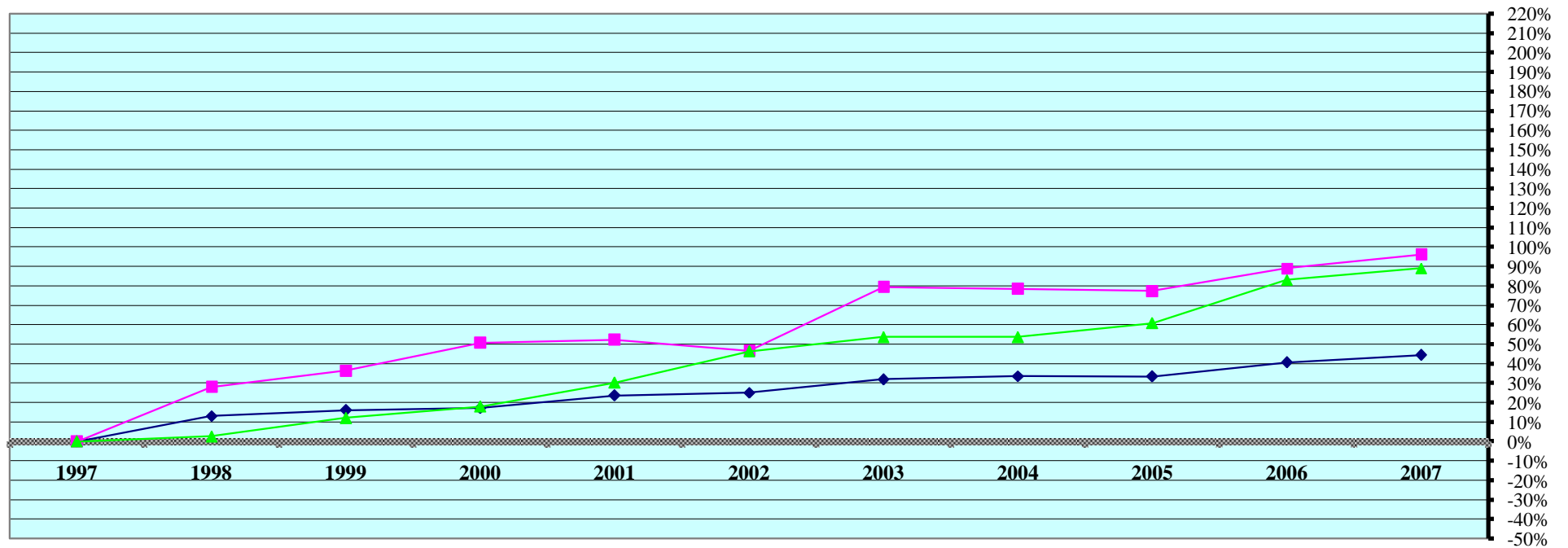


REAL PROPERTY VALUATIONS - Cumulative %Change 1997-2007



Tax Year	Residential & Recreational ⁽¹⁾				Commercial & Industrial ⁽¹⁾				Total Agricultural Land ⁽¹⁾			
	Value	Amnt Value Chg	Ann.%chg	Cmltv%chg	Value	Amnt Value Chg	Ann.%chg	Cmltv%chg	Value	Amnt Value Chg	Ann.%chg	Cmltv%chg
1997	15,114,980	--	--	--	2,846,845	--	--	--	77,823,590	--	--	--
1998	17,098,085	1,983,105	13.12%	13.12%	3,646,055	799,210	28.07%	28.07%	79,911,150	2,087,560	2.68%	2.68%
1999	17,538,325	440,240	2.57%	16.03%	3,883,270	237,215	6.51%	36.41%	87,270,355	7,359,205	9.21%	12.14%
2000	17,719,885	181,560	1.04%	17.23%	4,292,165	408,895	10.53%	50.77%	91,790,100	4,519,745	5.18%	17.95%
2001	18,681,140	961,255	5.42%	23.59%	4,334,920	42,755	1.00%	52.27%	101,451,945	9,661,845	10.53%	30.36%
2002	18,917,510	236,370	1.27%	25.16%	4,173,675	-161,245	-3.72%	46.61%	113,839,205	12,387,260	12.21%	46.28%
2003	19,948,170	1,030,660	5.45%	31.98%	5,107,480	933,805	22.37%	79.41%	119,620,780	5,781,575	5.08%	53.71%
2004	20,201,095	252,925	1.27%	33.65%	5,082,600	-24,880	-0.49%	78.53%	119,625,545	4,765	0.00%	53.71%
2005	20,176,735	-24,360	-0.12%	33.49%	5,049,700	-32,900	-0.65%	77.38%	125,142,070	5,516,525	4.61%	60.80%
2006	21,263,060	1,086,325	5.38%	40.68%	5,383,300	333,600	6.61%	89.10%	142,486,065	17,343,995	13.86%	83.09%
2007	21,841,690	578,630	2.72%	44.50%	5,583,865	200,565	3.73%	96.14%	147,140,505	4,654,440	3.27%	89.07%

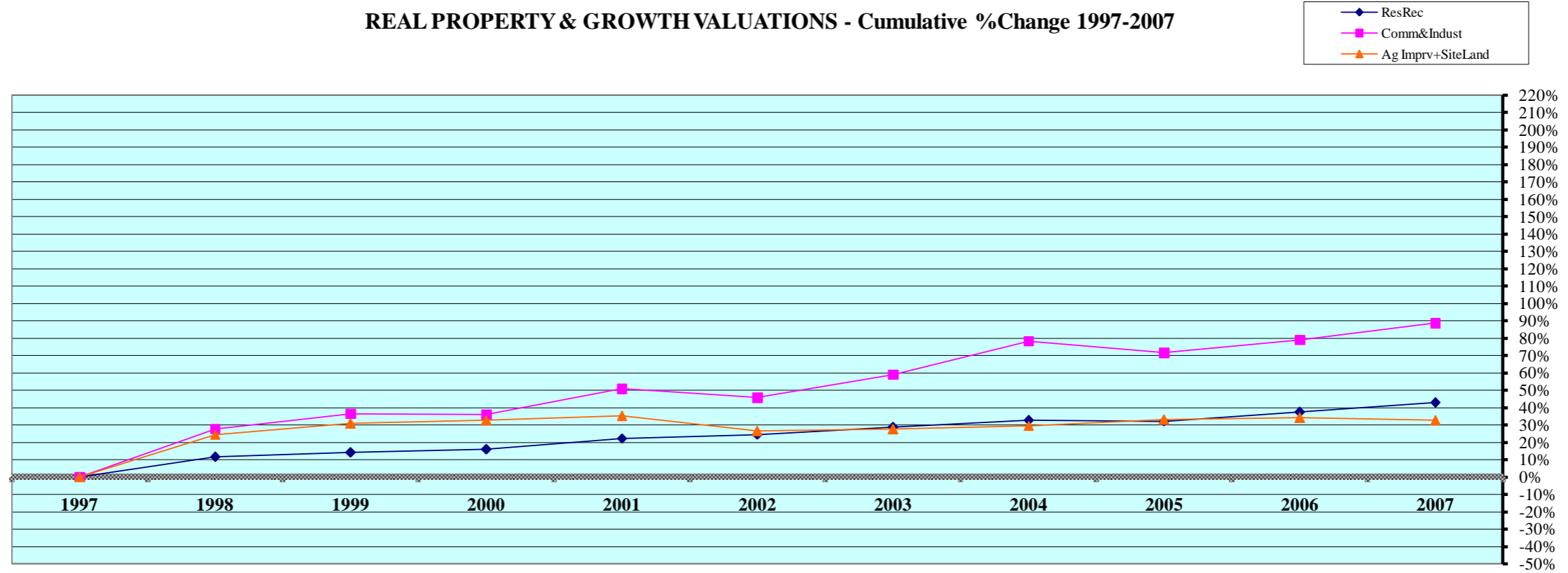
Rate Ann. %chg: Resid & Rec. Comm & Indust Agric. Land

Cnty#
 County

FL area

(1) Resid. & Recreat. excludes agdwell & farm homesite land; Comm. & Indust. excludes minerals; Agland includes irrigated, dry, grass, waste, & other agland, excludes farmsite land.
 Source: 1997 - 2007 Certificate of Taxes Levied Reports CTL NE Dept. of Revenue Property Assessment Division Prepared as of 03/01/2008

REAL PROPERTY & GROWTH VALUATIONS - Cumulative %Change 1997-2007



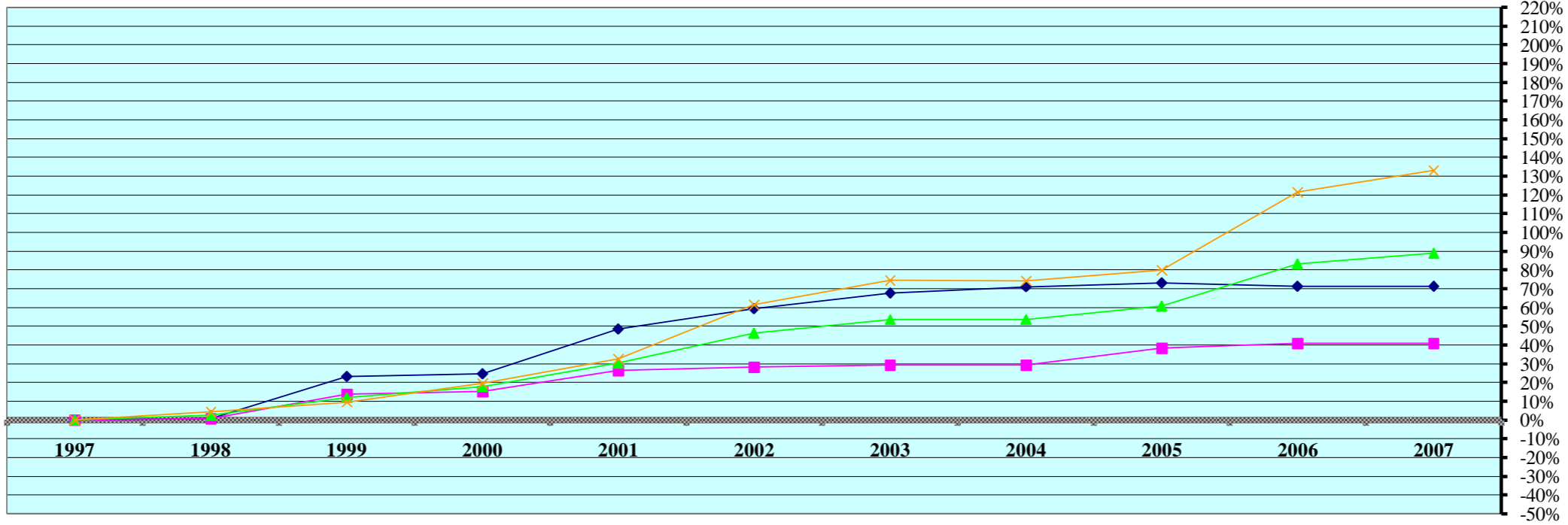
Tax Year	Residential & Recreational ⁽¹⁾						Commercial & Industrial ⁽¹⁾					
	Value	Growth Value	% growth of value	Value Exclud. Growth	Ann.%chg w/o grwth	Cmltv%chg w/o grwth	Value	Growth Value	% growth of value	Value Exclud. Growth	Ann.%chg w/o grwth	Cmltv%chg w/o grwth
1997	15,114,980	506,090	3.35%	14,608,890	--	--	2,846,845	0	0.00%	2,846,845	--	--
1998	17,098,085	241,121	1.41%	16,856,964	11.52%	11.52%	3,646,055	11,090	0.30%	3,634,965	27.68%	27.68%
1999	17,538,325	292,145	1.67%	17,246,180	0.87%	14.10%	3,883,270	0	0.00%	3,883,270	6.51%	36.41%
2000	17,719,885	189,640	1.07%	17,530,245	-0.05%	15.98%	4,292,165	423,685	9.87%	3,868,480	-0.38%	35.89%
2001	18,681,140	207,425	1.11%	18,473,715	4.25%	22.22%	4,334,920	43,850	1.01%	4,291,070	-0.03%	50.73%
2002	18,917,510	111,190	0.59%	18,806,320	0.67%	24.42%	4,173,675	22,435	0.54%	4,151,240	-4.24%	45.82%
2003	19,948,170	519,030	2.60%	19,429,140	2.70%	28.54%	5,107,480	580,580	11.37%	4,526,900	8.46%	59.01%
2004	20,201,095	140,090	0.69%	20,061,005	0.57%	32.72%	5,082,600	6,690	0.13%	5,075,910	-0.62%	78.30%
2005	20,176,735	211,355	1.05%	19,965,380	-1.17%	32.09%	5,049,700	164,045	3.25%	4,885,655	-3.87%	71.62%
2006	21,263,060	501,245	2.36%	20,761,815	2.90%	37.36%	5,383,300	286,725	5.33%	5,096,575	0.93%	79.03%
2007	21,841,690	274,535	1.26%	21,567,155	1.43%	42.69%	5,583,865	210,000	3.76%	5,373,865	-0.18%	88.77%
Rate Ann%chg	3.75%			Resid & Rec. w/o growth		2.37%	6.97%			C & I w/o growth		3.43%

Tax Year	Ag Improvements & Site Land ⁽¹⁾					Ann.%chg w/o grwth	Cmltv%chg w/o grwth
	Agdwell & Homesite Value	Agoutbldg & Farmsite Value	Ag Imprv&Site Total Value	Growth Value	% growth of value		
1997	5,719,580	4,169,530	9,889,110	56,160	0.57%	--	--
1998	8,311,530	4,236,940	12,548,470	247,638	1.97%	24.39%	24.39%
1999	8,639,365	4,513,365	13,152,730	213,830	1.63%	3.11%	30.84%
2000	8,704,075	4,560,475	13,264,550	161,525	1.22%	-0.38%	32.50%
2001	9,208,205	4,598,355	13,806,560	430,567	3.12%	0.84%	35.26%
2002	9,051,395	3,654,945	12,706,340	194,975	1.53%	-9.38%	26.52%
2003	9,085,595	3,773,675	12,859,270	246,745	1.92%	-0.74%	27.54%
2004	9,196,470	3,830,960	13,027,430	220,374	1.69%	-0.41%	29.51%
2005	9,354,010	4,020,125	13,374,135	218,915	1.64%	0.98%	33.03%
2006	9,364,730	4,105,205	13,469,935	208,625	1.55%	-0.84%	34.10%
2007	9,801,945	3,719,700	13,521,645	402,690	2.98%	-2.61%	32.66%
Rate Ann%chg	5.53%	-1.14%	3.18%	Ag Imprv+Site w/o growth		1.50%	

(1) Resid. & Recreat. excludes agdwell & farm homesite land; Comm. & Indust. excludes minerals; Agland includes irrigated, dry, grass, waste & other agland, excludes farmsite land. Real Prop Growth = value attributable to new construction, additions to existing buildings, and any improvements for real property which increase the value of such property.

Sources:
Value; 1997 - 2007 CTL
Growth Value; 1997-2007 Abstract of Asmnt Rpt.
NE Dept. of Revenue Property Assessment Division
Prepared as of 03/01/2008

AGRICULTURAL LAND VALUATIONS - Cumulative %Change 1997-2007



Tax Year	Irrigated Land				Dryland				Grassland			
	Value	Value Chg	Ann%chg	Cmltv%chg	Value	Value Chg	Ann%chg	Cmltv%chg	Value	Value Chg	Ann%chg	Cmltv%chg
1997	1,933,935	--	--	--	36,112,970	--	--	--	39,748,510	--	--	--
1998	1,952,505	18,570	0.96%	0.96%	36,371,730	258,760	0.72%	0.72%	41,445,800	1,697,290	4.27%	4.27%
1999	2,381,345	428,840	21.96%	23.13%	41,128,210	4,756,480	13.08%	13.89%	43,563,210	2,117,410	5.11%	9.60%
2000	2,410,130	28,785	1.21%	24.62%	41,599,505	471,295	1.15%	15.19%	47,496,370	3,933,160	9.03%	19.49%
2001	2,872,560	462,430	19.19%	48.53%	45,623,280	4,023,775	9.67%	26.33%	52,664,805	5,168,435	10.88%	32.50%
2002	3,079,105	206,545	7.19%	59.21%	46,319,540	696,260	1.53%	28.26%	64,149,290	11,484,485	21.81%	61.39%
2003	3,244,425	165,320	5.37%	67.76%	46,724,415	404,875	0.87%	29.38%	69,363,980	5,214,690	8.13%	74.51%
2004	3,309,365	64,940	2.00%	71.12%	46,738,675	14,260	0.03%	29.42%	69,289,920	-74,060	-0.11%	74.32%
2005	3,345,925	36,560	1.10%	73.01%	49,967,150	3,228,475	6.91%	38.36%	71,536,995	2,247,075	3.24%	79.97%
2006	3,312,055	-33,870	-1.01%	71.26%	50,849,615	882,465	1.77%	40.81%	88,032,395	16,495,400	23.06%	121.47%
2007	3,312,055	0	0.00%	71.26%	50,855,965	6,350	0.01%	40.82%	92,680,485	4,648,090	5.28%	133.17%

Rate Ann.%chg: Irrigated **5.53%** Dryland **3.48%** Grassland **8.83%**

Tax Year	Waste Land ⁽¹⁾				Other Agland ⁽¹⁾				Total Agricultural			
	Value	Value Chg	Ann%chg	Cmltv%chg	Value	Value Chg	Ann%chg	Cmltv%chg	Value	Value Chg	Ann%chg	Cmltv%chg
1997	--	--	--	--	28,175	--	--	--	77,823,590	--	--	--
1998	--	--	--	--	141,115	112,940	400.85%	400.85%	79,911,150	2,087,560	2.68%	2.68%
1999	--	--	--	--	197,590	56,475	40.02%	601.30%	87,270,355	7,359,205	9.21%	12.14%
2000	--	--	--	--	284,095	86,505	43.78%	908.32%	91,790,100	4,519,745	5.18%	17.95%
2001	--	--	--	--	291,300	7,205	2.54%	933.90%	101,451,945	9,661,845	10.53%	30.36%
2002	--	--	--	--	291,270	-30	-0.01%	933.79%	113,839,205	12,387,260	12.21%	46.28%
2003	287,960	n/a	n/a	n/a	0	n/a	n/a	n/a	119,620,780	5,781,575	5.08%	53.71%
2004	287,585	-375	-0.13%	-0.13%	0	0			119,625,545	4,765	0.00%	53.71%
2005	286,225	-1,360	-0.47%	-0.60%	5,775	5,775			125,142,070	5,516,525	4.61%	60.80%
2006	286,225	0	0.00%	-0.60%	5,775	0	0.00%		142,486,065	17,343,995	13.86%	83.09%
2007	286,225	0	0.00%	-0.60%	5,775	0	0.00%		147,140,505	4,654,440	3.27%	89.07%

Cnty# **8** County **BOYD** FL area **11** Rate Ann.%chg: Total Agric Land **6.58%**

(1) Prior to 2003, waste land data was reported with other agland due to CTL reporting form structure; Beginning 2003 waste land isolated from other agland.
 Source: 1997 - 2007 Certificate of Taxes Levied Reports CTL NE Dept. of Revenue Property Assessment Division Prepared as of 03/01/2008

AGRICULTURAL LAND - AVERAGE VALUE PER ACRE - Cumulative % Change 1997-2007 (from Abstracts)⁽¹⁾

Tax Year	IRRIGATED LAND					DRYLAND					GRASSLAND				
	Value	Acres	Avg Value per Acre	Ann%chg AvgVal/acre	Cmltv%chg AvgVal/Acre	Value	Acres	Avg Value per Acre	Ann%chg AvgVal/acre	Cmltv%chg AvgVal/Acre	Value	Acres	Avg Value per Acre	Ann%chg AvgVal/acre	Cmltv%chg AvgVal/Acre
1997	1,942,000	5,393	360	--	--	36,247,540	96,897	374	--	--	39,720,825	210,009	189	--	--
1998	1,971,435	5,533	356	-1.11%	-1.11%	36,501,995	97,118	376	0.53%	0.53%	41,435,645	210,070	197	4.23%	4.23%
1999	2,381,345	5,606	425	19.38%	18.06%	41,266,195	97,040	425	13.03%	13.64%	43,579,560	210,065	207	5.08%	9.52%
2000	2,459,330	5,606	439	3.29%	21.94%	41,812,250	96,922	431	1.41%	15.24%	47,348,630	210,213	225	8.70%	19.05%
2001	2,876,240	5,587	515	17.31%	43.06%	45,779,960	98,319	466	8.12%	24.60%	52,691,685	221,264	238	5.78%	25.93%
2002	3,144,610	5,581	563	9.32%	56.39%	46,350,845	98,080	473	1.50%	26.47%	64,123,515	221,569	289	21.43%	52.91%
2003	3,296,525	5,477	602	6.93%	67.22%	46,895,295	97,974	479	1.27%	28.07%	69,338,295	221,590	313	8.30%	65.61%
2004	3,309,365	5,497	602	0.00%	67.22%	46,873,090	97,913	479	-0.06%	28.00%	69,364,370	221,694	313	-0.04%	65.55%
2005	3,431,725	5,497	624	3.70%	73.40%	49,824,530	97,877	509	6.34%	36.11%	71,604,340	221,421	323	3.36%	71.10%
2006	3,345,925	5,369	623	-0.18%	73.10%	50,823,325	98,129	518	1.74%	38.48%	88,032,395	221,178	398	23.08%	110.59%
2007	3,312,055	5,317	623	-0.04%	73.02%	50,849,615	98,181	518	0.00%	38.48%	92,691,475	221,175	419	5.29%	121.74%

Rate Ann.%chg AvgVal/Acre:

5.64%

3.31%

8.29%

Tax Year	WASTE LAND ⁽²⁾					OTHER AGLAND ⁽²⁾					TOTAL AGRICULTURAL LAND ⁽¹⁾				
	Value	Acres	Avg Value per Acre	Ann%chg AvgVal/acre	Cmltv%chg AvgVal/Acre	Value	Acres	Avg Value per Acre	Ann%chg AvgVal/acre	Cmltv%chg AvgVal/Acre	Value	Acres	Avg Value per Acre	Ann%chg AvgVal/acre	Cmltv%chg AvgVal/Acre
1997						28,200	5,653	5	--		77,938,565	317,951	245	--	--
1998						141,115	5,648	25	400.00%		80,050,190	318,370	251	2.45%	2.45%
1999						197,590	5,646	35	40.00%		87,424,690	318,358	275	9.56%	12.24%
2000						282,100	5,643	50	42.86%		91,902,310	318,384	289	5.09%	17.96%
2001						288,800	5,777	50	0.00%		101,636,685	330,948	307	6.23%	25.31%
2002						291,300	5,827	50	0.00%		113,910,270	331,057	344	12.05%	40.41%
2003	291,120	5,823	50	n/a	n/a	0	0		n/a	n/a	119,821,235	330,865	362	5.23%	47.76%
2004	293,490	5,870	50	-0.01%	n/a	0	499	0		n/a	119,840,315	331,473	362	-0.13%	47.57%
2005	287,680	6,087	47	-5.47%	n/a	0	0			n/a	125,148,275	330,883	378	4.62%	54.38%
2006	286,225	6,105	47	-0.80%	n/a	0	0			n/a	142,487,870	330,782	431	13.89%	75.82%
2007	286,225	6,105	47	0.00%	n/a	0	0			n/a	147,139,370	330,779	445	3.27%	81.56%

8
BOYD

FL area **11**

Rate Ann.%chg AvgVal/Acre:

6.15%

(1) Valuations on Abstracts vs CTL will vary due to different reporting dates (2) Prior to 2003, waste land data was reported with other agland; Beginning 2003 waste land isolated from other agland
source: 1997 - 2007 Abstracts Agland Assessment Level 80% for 1997-2006; 75% for 2007 NE Dept. of Revenue Property Assessment Division Prepared as of 03/01/2008

2007 County and Municipal Valuations by Property Type

Pop.	County:	Personal Prop	StateAsd PP	StateAsdReal	Residential	Commercial	Industrial	Recreation	Agland	Agdwell&HS	AgImprv&FS	Minerals	Total Value
2,438	BOYD	12,944,371	38,665	7,776	18,608,950	5,583,865	0	3,232,740	147,140,505	9,801,945	3,719,700	0	201,078,517
cnty sector value % of total value:		6.44%	0.02%	0.00%	9.25%	2.78%		1.61%	73.18%	4.87%	1.85%		100.00%
Pop.	Municipality:	Personal Prop	StateAsd PP	StateAsd Real	Residential	Commercial	Industrial	Recreation	Agland	Agdwell&HS	AgImprv&FS	Minerals	Total Value
10	ANOKA	30,802	453	91	29,800	0	0	0	74,775	13,920	5,630	0	155,471
0.41%	%sector of county sector	0.24%	1.17%	1.17%	0.16%				0.05%	0.14%	0.15%		0.08%
	%sector of municipality	19.81%	0.29%	0.06%	19.17%				48.10%	8.95%	3.62%		100.00%
88	BRISTOW	56,788	25,312	5,091	741,540	130,960	0	0	2,260	0	0	0	961,951
3.61%	%sector of county sector	0.44%	65.46%	65.47%	3.98%	2.35%			0.00%				0.48%
	%sector of municipality	5.90%	2.63%	0.53%	77.09%	13.61%			0.23%				100.00%
366	BUTTE	704,941	0	0	3,490,770	1,822,235	0	0	3,170	0	7,570	0	6,028,686
15.01%	%sector of county sector	5.45%			18.76%	32.63%			0.00%		0.20%		3.00%
	%sector of municipality	11.69%			57.90%	30.23%			0.05%		0.13%		100.00%
5	GROSS	5,356	0	0	28,820	2,260	0	0	0	0	0	0	36,436
0.21%	%sector of county sector	0.04%			0.15%	0.04%							0.02%
	%sector of municipality	14.70%			79.10%	6.20%							100.00%
269	LYNCH	148,267	651	131	3,666,360	592,630	0	0	0	0	0	0	4,408,039
11.03%	%sector of county sector	1.15%	1.68%	1.68%	19.70%	10.61%							2.19%
	%sector of municipality	3.36%	0.01%	0.00%	83.17%	13.44%							100.00%
2	MONOWI	2,953	0	0	16,330	3,065	0	0	3,270	0	1,850	0	27,468
0.08%	%sector of county sector	0.02%			0.09%	0.05%			0.00%		0.05%		0.01%
	%sector of municipality	10.75%			59.45%	11.16%			11.90%		6.74%		100.00%
105	NAPER	51,054	0	0	983,090	137,180	0	0	0	0	0	0	1,171,324
4.31%	%sector of county sector	0.39%			5.28%	2.46%							0.58%
	%sector of municipality	4.36%			83.93%	11.71%							100.00%
541	SPENCER	524,482	0	0	7,850,365	2,191,630	0	0	955	0	0	0	10,567,432
22.19%	%sector of county sector	4.05%			42.19%	39.25%			0.00%				5.26%
	%sector of municipality	4.96%			74.29%	20.74%			0.01%				100.00%
1,386	Total Municipalities	1,524,643	26,416	5,313	16,807,075	4,879,960	0	0	84,430	13,920	15,050	0	23,356,807
56.85%	%all municip.sect of cnty	11.78%	68.32%	68.33%	90.32%	87.39%			0.06%	0.14%	0.40%		11.62%

Cnty#	County
8	BOYD

Sources: 2007 Certificate of Taxes Levied CTL, 2000 US Census; Dec2007 Municipality Pop. per Research Division Dept. of Revenue Property Assessment Division Prepared as of 03/01/2008
 FL area 11