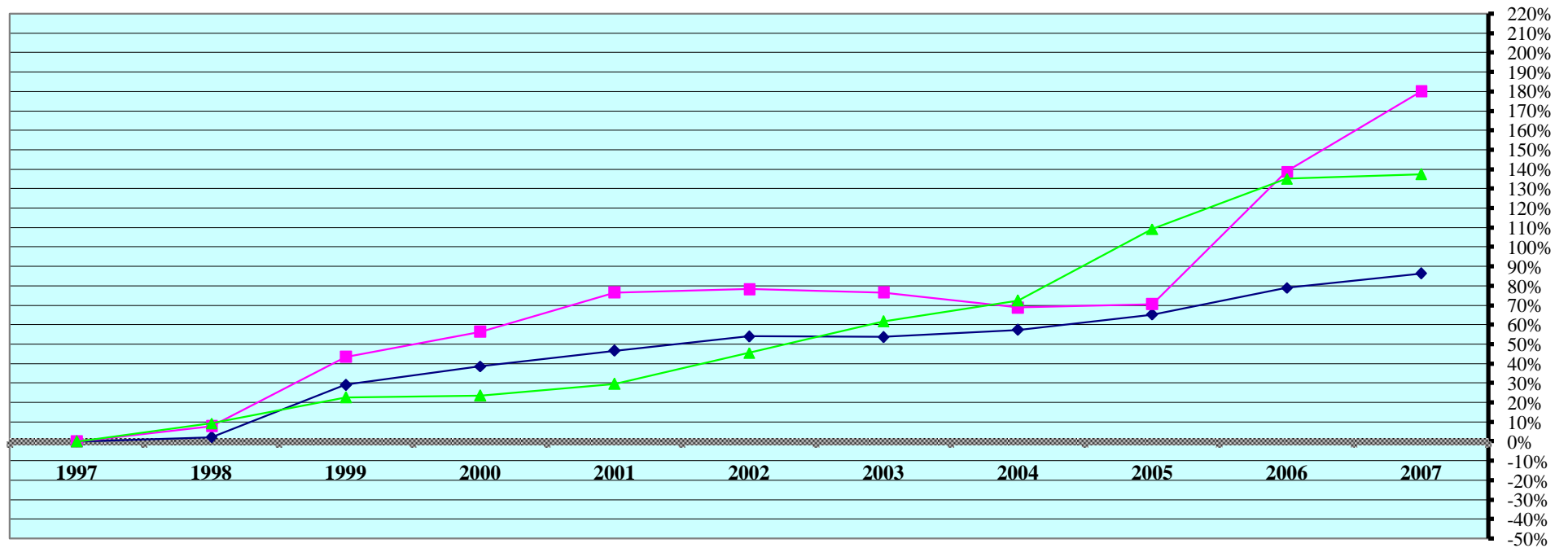


REAL PROPERTY VALUATIONS - Cumulative %Change 1997-2007



Tax Year	Residential & Recreational ⁽¹⁾				Commercial & Industrial ⁽¹⁾				Total Agricultural Land ⁽¹⁾			
	Value	Amnt Value Chg	Ann.%chg	Cmltv%chg	Value	Amnt Value Chg	Ann.%chg	Cmltv%chg	Value	Amnt Value Chg	Ann.%chg	Cmltv%chg
1997	56,704,042	--	--	--	19,951,837	--	--	--	240,034,265	--	--	--
1998	57,963,371	1,259,329	2.22%	2.22%	21,526,784	1,574,947	7.89%	7.89%	262,456,245	22,421,980	9.34%	9.34%
1999	73,228,538	15,265,167	26.34%	29.14%	28,633,088	7,106,304	33.01%	43.51%	294,751,975	32,295,730	12.31%	22.80%
2000	78,610,134	5,381,596	7.35%	38.63%	31,222,244	2,589,156	9.04%	56.49%	296,741,950	1,989,975	0.68%	23.62%
2001	83,185,176	4,575,042	5.82%	46.70%	35,236,665	4,014,421	12.86%	76.61%	311,320,195	14,578,245	4.91%	29.70%
2002	87,335,420	4,150,244	4.99%	54.02%	35,570,595	333,930	0.95%	78.28%	349,393,040	38,072,845	12.23%	45.56%
2003	87,160,835	-174,585	-0.20%	53.71%	35,236,955	-333,640	-0.94%	76.61%	388,516,005	39,122,965	11.20%	61.86%
2004	89,284,940	2,124,105	2.44%	57.46%	33,686,265	-1,550,690	-4.40%	68.84%	413,961,310	25,445,305	6.55%	72.46%
2005	93,752,370	4,467,430	5.00%	65.34%	34,029,325	343,060	1.02%	70.56%	502,354,255	88,392,945	21.35%	109.28%
2006	101,506,200	7,753,830	8.27%	79.01%	47,671,280	13,641,955	40.09%	138.93%	564,366,930	62,012,675	12.34%	135.12%
2007	105,662,190	4,155,990	4.09%	86.34%	55,861,595	8,190,315	17.18%	179.98%	569,760,645	5,393,715	0.96%	137.37%

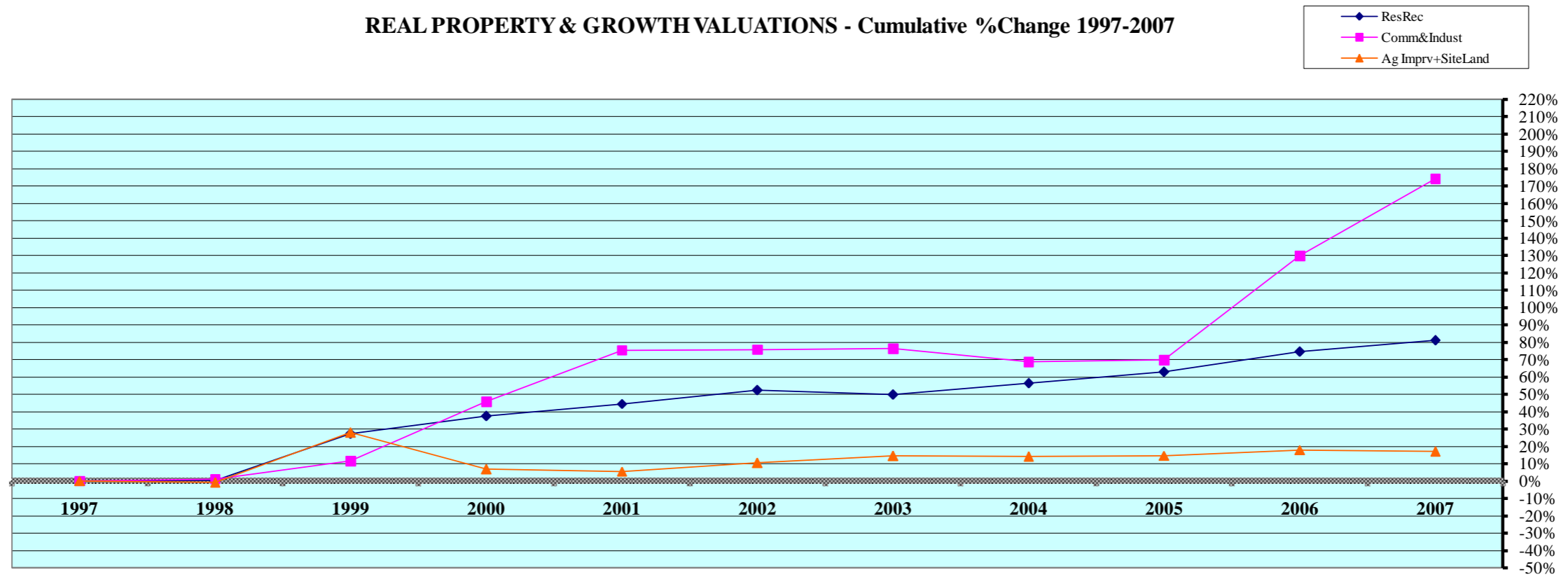
Rate Ann. %chg: Resid & Rec. 6.42% Comm & Indust 10.84% Agric. Land 9.03%

Cnty# 2
 County ANTELOPE

FL area 6

(1) Resid. & Recreat. excludes agdwll & farm homesite land; Comm. & Indust. excludes minerals; Agland includes irrigated, dry, grass, waste, & other agland, excludes farmsite land.
 Source: 1997 - 2007 Certificate of Taxes Levied Reports CTL NE Dept. of Revenue Property Assessment Division Prepared as of 03/01/2008

REAL PROPERTY & GROWTH VALUATIONS - Cumulative %Change 1997-2007



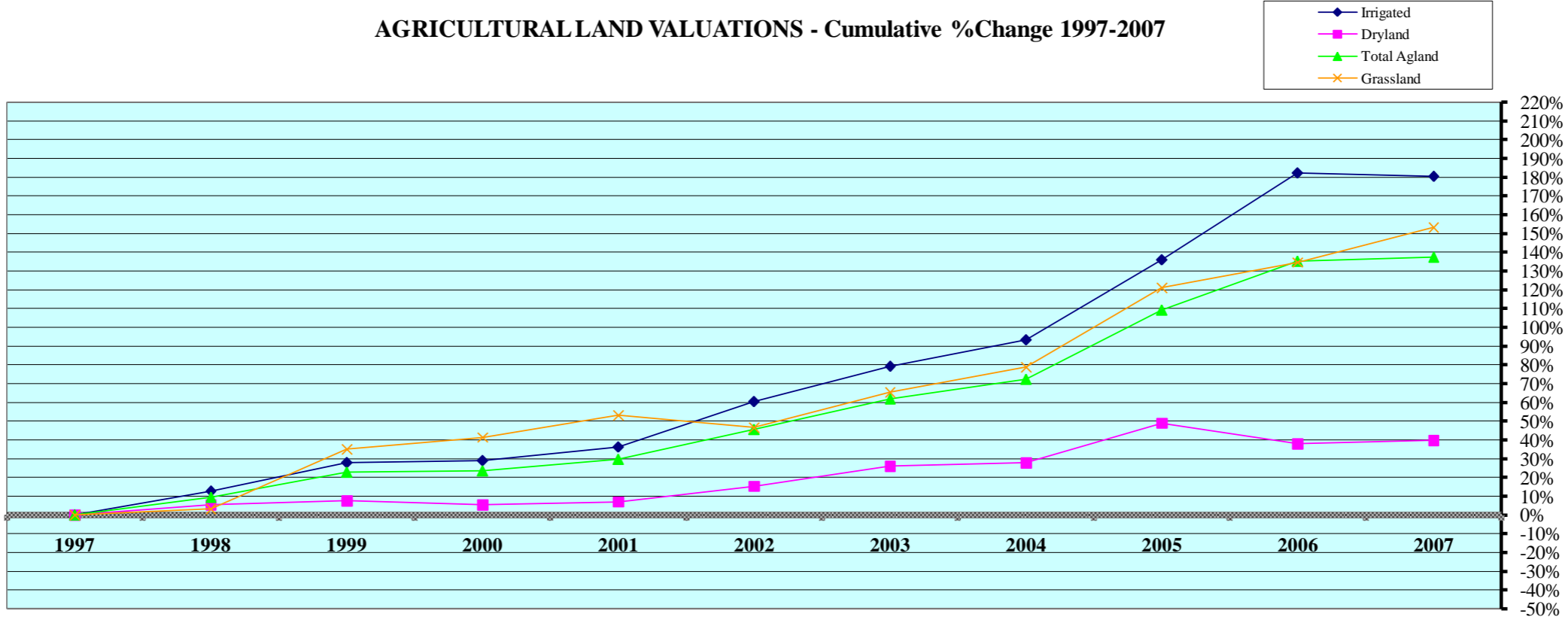
Tax Year	Residential & Recreational ⁽¹⁾						Commercial & Industrial ⁽¹⁾					
	Value	Growth Value	% growth of value	Value Exclud. Growth	Ann.%chg w/o grwth	Cmltv%chg w/o grwth	Value	Growth Value	% growth of value	Value Exclud. Growth	Ann.%chg w/o grwth	Cmltv%chg w/o grwth
1997	56,704,042	1,226,624	2.16%	55,477,418	--	--	19,951,837	1,304,163	6.54%	18,647,674	--	--
1998	57,963,371	1,141,510	1.97%	56,821,861	0.21%	0.21%	21,526,784	1,346,520	6.26%	20,180,264	1.14%	1.14%
1999	73,228,538	1,169,980	1.60%	72,058,558	24.32%	27.08%	28,633,088	6,371,565	22.25%	22,261,523	3.41%	11.58%
2000	78,610,134	779,785	0.99%	77,830,349	6.28%	37.26%	31,222,244	2,131,990	6.83%	29,090,254	1.60%	45.80%
2001	83,185,176	1,280,840	1.54%	81,904,336	4.19%	44.44%	35,236,665	241,185	0.68%	34,995,480	12.09%	75.40%
2002	87,335,420	936,080	1.07%	86,399,340	3.86%	52.37%	35,570,595	511,605	1.44%	35,058,990	-0.50%	75.72%
2003	87,160,835	2,203,200	2.53%	84,957,635	-2.72%	49.83%	35,236,955	79,255	0.22%	35,157,700	-1.16%	76.21%
2004	89,284,940	636,440	0.71%	88,648,500	1.71%	56.34%	33,686,265	65,025	0.19%	33,621,240	-4.59%	68.51%
2005	93,752,370	1,456,032	1.55%	92,296,338	3.37%	62.77%	34,029,325	150,660	0.44%	33,878,665	0.57%	69.80%
2006	101,506,200	2,556,570	2.52%	98,949,630	5.54%	74.50%	47,671,280	1,806,700	3.79%	45,864,580	34.78%	129.88%
2007	105,662,190	3,041,735	2.88%	102,620,455	1.10%	80.98%	55,861,595	1,132,735	2.03%	54,728,860	14.80%	174.30%
Rate Ann%chg	6.42%		Resid & Rec. w/o growth			4.79%	10.84%		C & I w/o growth			6.21%

Tax Year	Ag Improvements & Site Land ⁽¹⁾							
	Agdwell & Homesite Value	Agoutbldg & Farmsite Value	Ag Imprv&Site Total Value	Growth Value	% growth of value	Value Exclud. Growth	Ann.%chg w/o grwth	Cmltv%chg w/o grwth
1997	23,526,600	27,933,561	51,460,161	750,555	1.46%	50,709,606	--	--
1998	23,774,994	28,467,012	52,242,006	1,252,040	2.40%	50,989,966	-0.91%	-0.91%
1999	38,327,112	29,508,901	67,836,013	2,032,505	3.00%	65,803,508	25.96%	27.87%
2000	37,847,760	18,919,190	56,766,950	1,865,945	3.29%	54,901,005	-19.07%	6.69%
2001	37,834,435	20,172,455	58,006,890	3,736,570	6.44%	54,270,320	-4.40%	5.46%
2002	38,426,215	21,662,470	60,088,685	3,276,610	5.45%	56,812,075	-2.06%	10.40%
2003	38,452,725	21,207,055	59,659,780	776,270	1.30%	58,883,510	-2.01%	14.43%
2004	40,918,875	18,450,855	59,369,730	744,204	1.25%	58,625,526	-1.73%	13.92%
2005	42,678,590	17,707,440	60,386,030	1,430,490	2.37%	58,955,540	-0.70%	14.57%
2006	42,255,330	18,407,485	60,662,815	9,595	0.02%	60,653,220	0.44%	17.86%
2007	41,913,820	18,289,240	60,203,060	0	0.00%	60,203,060	-0.76%	16.99%
Rate Ann%chg	5.94%	-4.15%	1.58%	Ag Imprv+Site w/o growth		-0.52%		

(1) Resid. & Recreat. excludes agdwell & farm homesite land; Comm. & Indust. excludes minerals; Agland includes irrigated, dry, grass, waste & other agland, excludes farmsite land. Real Prop Growth = value attributable to new construction, additions to existing buildings, and any improvements for real property which increase the value of such property.

Sources:
Value; 1997 - 2007 CTL
Growth Value; 1997-2007 Abstract of Asmnt Rpt.
NE Dept. of Revenue Property Assessment Division
Prepared as of 03/01/2008

AGRICULTURAL LAND VALUATIONS - Cumulative %Change 1997-2007



Tax Year	Irrigated Land				Dryland				Grassland			
	Value	Value Chg	Ann%chg	Cmltv%chg	Value	Value Chg	Ann%chg	Cmltv%chg	Value	Value Chg	Ann%chg	Cmltv%chg
1997	137,040,520	--	--	--	71,162,570	--	--	--	31,530,900	--	--	--
1998	154,547,260	17,506,740	12.77%	12.77%	75,059,295	3,896,725	5.48%	5.48%	32,550,430	1,019,530	3.23%	3.23%
1999	175,248,825	20,701,565	13.39%	27.88%	76,621,705	1,562,410	2.08%	7.67%	42,581,245	10,030,815	30.82%	35.05%
2000	176,824,760	1,575,935	0.90%	29.03%	75,028,940	-1,592,765	-2.08%	5.43%	44,593,530	2,012,285	4.73%	41.43%
2001	186,473,685	9,648,925	5.46%	36.07%	76,206,550	1,177,610	1.57%	7.09%	48,337,815	3,744,285	8.40%	53.30%
2002	219,950,470	33,476,785	17.95%	60.50%	82,139,850	5,933,300	7.79%	15.43%	46,236,695	-2,101,120	-4.35%	46.64%
2003	245,527,275	25,576,805	11.63%	79.16%	89,749,065	7,609,215	9.26%	26.12%	52,167,990	5,931,295	12.83%	65.45%
2004	264,846,280	19,319,005	7.87%	93.26%	91,042,725	1,293,660	1.44%	27.94%	56,405,440	4,237,450	8.12%	78.89%
2005	323,294,790	58,448,510	22.07%	135.91%	106,048,400	15,005,675	16.48%	49.02%	69,757,865	13,352,425	23.67%	121.24%
2006	386,637,295	63,342,505	19.59%	182.13%	98,154,930	-7,893,470	-7.44%	37.93%	74,019,855	4,261,990	6.11%	134.75%
2007	384,450,005	-2,187,290	-0.57%	180.54%	99,532,795	1,377,865	1.40%	39.87%	79,856,855	5,837,000	7.89%	153.27%

Rate Ann.%chg: Irrigated **10.87%** Dryland **3.41%** Grassland **9.74%**

Tax Year	Waste Land ⁽¹⁾				Other Agland ⁽¹⁾				Total Agricultural			
	Value	Value Chg	Ann%chg	Cmltv%chg	Value	Value Chg	Ann%chg	Cmltv%chg	Value	Value Chg	Ann%chg	Cmltv%chg
1997		--	--	--	300,275	--	--	--	240,034,265	--	--	--
1998		--	--	--	299,260	-1,015	-0.34%	-0.34%	262,456,245	22,421,980	9.34%	9.34%
1999		--	--	--	300,200	940	0.31%	-0.02%	294,751,975	32,295,730	12.31%	22.80%
2000		--	--	--	294,720	-5,480	-1.83%	-1.85%	296,741,950	1,989,975	0.68%	23.62%
2001		--	--	--	302,145	7,425	2.52%	0.62%	311,320,195	14,578,245	4.91%	29.70%
2002		--	--	--	1,066,025	763,880	252.82%	255.02%	349,393,040	38,072,845	12.23%	45.56%
2003	131,670	n/a	n/a	n/a	940,005	n/a	n/a	n/a	388,516,005	39,122,965	11.20%	61.86%
2004	253,650	121,980	92.64%	92.64%	1,413,215	473,210	50.34%	50.34%	413,961,310	25,445,305	6.55%	72.46%
2005	337,625	83,975	33.11%	156.42%	2,915,575	1,502,360	106.31%	210.17%	502,354,255	88,392,945	21.35%	109.28%
2006	2,064,620	1,726,995	511.51%	1468.03%	3,490,230	574,655	19.71%	271.30%	564,366,930	62,012,675	12.34%	135.12%
2007	1,608,415	-456,205	-22.10%	1121.55%	4,312,575	822,345	23.56%	358.78%	569,760,645	5,393,715	0.96%	137.37%

Cnty# **2** Rate Ann.%chg: Total Agric Land **9.03%**
 County **ANTELOPE** FL area **6**

(1) Prior to 2003, waste land data was reported with other agland due to CTL reporting form structure; Beginning 2003 waste land isolated from other agland.

AGRICULTURAL LAND - AVERAGE VALUE PER ACRE - Cumulative % Change 1997-2007 (from Abstracts)⁽¹⁾

Tax Year	IRRIGATED LAND					DRYLAND					GRASSLAND				
	Value	Acres	Avg Value per Acre	Ann%chg AvgVal/acre	Cmltv%chg AvgVal/Acre	Value	Acres	Avg Value per Acre	Ann%chg AvgVal/acre	Cmltv%chg AvgVal/Acre	Value	Acres	Avg Value per Acre	Ann%chg AvgVal/acre	Cmltv%chg AvgVal/Acre
1997	136,947,130	201,711	679	--	--	71,384,760	148,355	481	--	--	31,519,490	149,559	211	--	--
1998	154,631,330	207,428	745	9.72%	9.72%	75,253,960	143,515	524	8.94%	8.94%	32,433,740	148,569	218	3.32%	3.32%
1999	175,856,085	212,234	829	11.28%	22.09%	76,659,045	139,544	549	4.77%	14.14%	42,444,170	147,256	288	32.11%	36.49%
2000	176,957,635	212,453	833	0.48%	22.68%	74,927,390	138,125	542	-1.28%	12.68%	44,525,180	146,943	303	5.21%	43.60%
2001	186,499,145	216,533	861	3.36%	26.80%	76,240,470	130,891	582	7.38%	21.00%	48,226,745	160,789	300	-0.99%	42.18%
2002	219,872,510	218,269	1,007	16.96%	48.31%	82,276,405	128,987	638	9.62%	32.64%	46,181,235	161,145	287	-4.33%	36.02%
2003	245,534,080	219,774	1,117	10.92%	64.51%	89,802,625	127,706	703	10.19%	46.15%	52,153,105	161,114	324	12.89%	53.55%
2004	264,920,000	222,115	1,193	6.78%	75.66%	91,152,375	125,424	727	3.38%	51.09%	56,622,340	160,684	352	8.76%	67.01%
2005	323,267,125	226,841	1,425	19.48%	109.88%	106,133,290	121,040	877	20.65%	82.30%	69,734,845	159,275	438	24.25%	107.50%
2006	386,008,570	246,779	1,564	9.76%	130.37%	98,472,555	105,853	930	6.09%	93.41%	74,254,560	154,149	482	10.02%	128.30%
2007	384,751,485	250,284	1,537	-1.72%	126.40%	99,365,290	102,733	967	3.97%	101.09%	79,894,200	153,217	521	8.25%	147.13%

Rate Ann.%chg AvgVal/Acre:

8.51%

7.24%

9.47%

Tax Year	WASTE LAND ⁽²⁾					OTHER AGLAND ⁽²⁾					TOTAL AGRICULTURAL LAND ⁽¹⁾				
	Value	Acres	Avg Value per Acre	Ann%chg AvgVal/acre	Cmltv%chg AvgVal/Acre	Value	Acres	Avg Value per Acre	Ann%chg AvgVal/acre	Cmltv%chg AvgVal/Acre	Value	Acres	Avg Value per Acre	Ann%chg AvgVal/acre	Cmltv%chg AvgVal/Acre
1997						299,230	13,580	22	--		240,150,610	513,204	468	--	--
1998						298,010	13,545	22	0.00%		262,617,040	513,057	512	9.40%	9.40%
1999						295,020	13,481	22	0.00%		295,254,320	512,515	576	12.50%	23.08%
2000						294,570	14,008	21	-4.55%		296,704,775	511,530	580	0.69%	23.93%
2001						300,785	14,099	21	0.00%		311,267,145	522,311	596	2.76%	27.35%
2002						1,066,755	14,238	75	257.14%		349,396,905	522,638	669	12.25%	42.95%
2003	131,670	2,632	50	n/a	n/a	939,455	9,407	100	n/a	n/a	388,560,935	520,633	746	11.51%	59.40%
2004	246,565	2,584	95	90.87%	n/a	1,412,265	9,422	150	49.90%	n/a	414,353,545	520,228	796	6.77%	70.19%
2005	341,670	2,646	129	35.32%	n/a	2,900,210	9,671	300	100.07%	n/a	502,377,140	519,472	967	21.42%	106.64%
2006	2,647,130	2,490	1,063	723.29%	n/a	3,340,430	9,685	345	15.00%	n/a	564,723,245	518,956	1,088	12.52%	132.52%
2007	1,608,815	2,483	648	-39.05%	n/a	3,734,630	9,923	376	9.12%	n/a	569,354,420	518,640	1,098	0.88%	134.57%

2
ANTELOPE

FL area **6**

Rate Ann.%chg AvgVal/Acre:

8.90%

(1) Valuations on Abstracts vs CTL will vary due to different reporting dates (2) Prior to 2003, waste land data was reported with other agland; Beginning 2003 waste land isolated from other agland
source: 1997 - 2007 Abstracts Agland Assessment Level 80% for 1997-2006; 75% for 2007 NE Dept. of Revenue Property Assessment Division Prepared as of 03/01/2008

