

NEBRASKA DEPARTMENT OF

*2007 Reports & Opinions
of the
Property Tax Administrator*

PROPERTY ASSESSMENT AND TAXATION

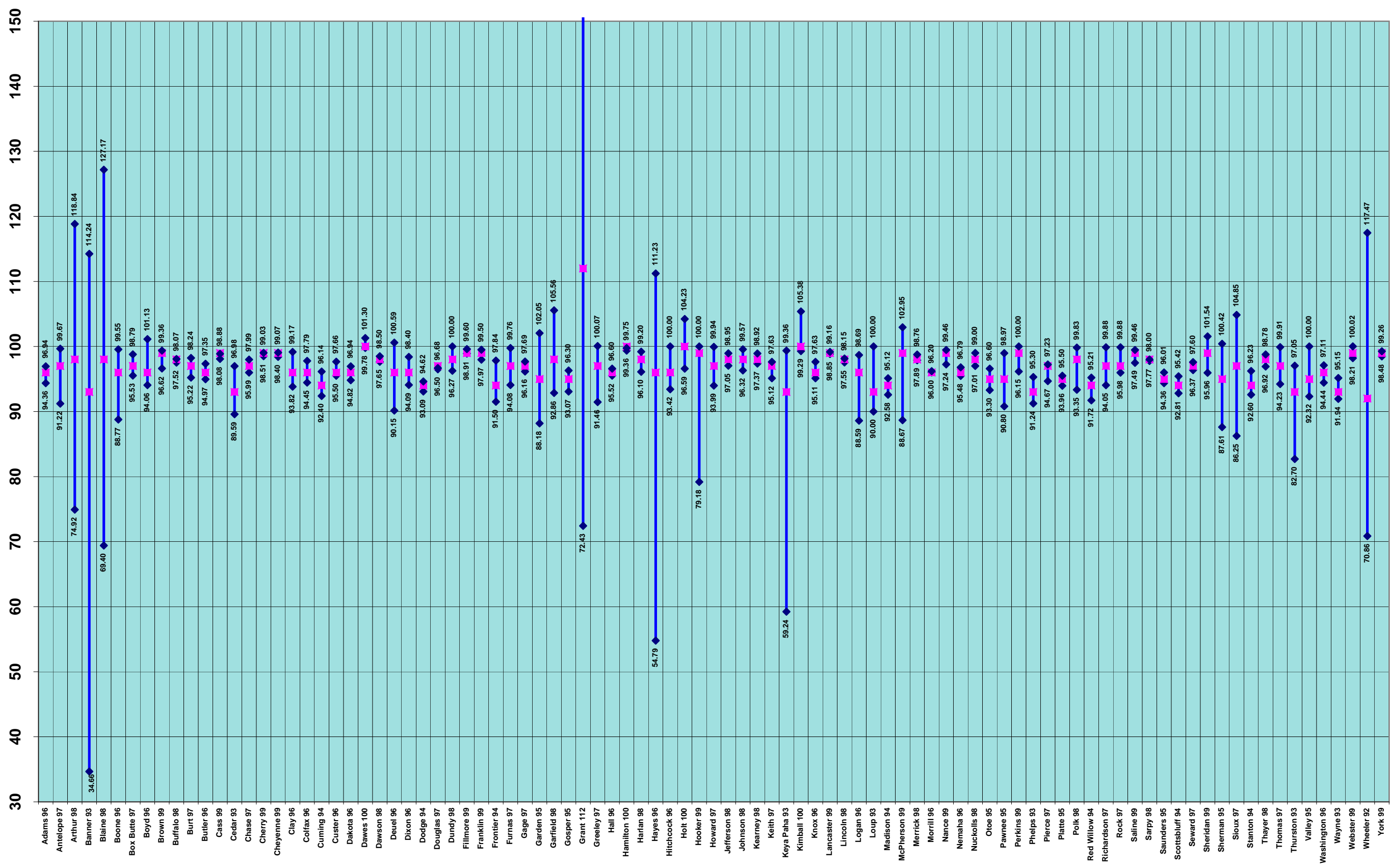
for

**95 % and 70 %
Confidence Intervals**

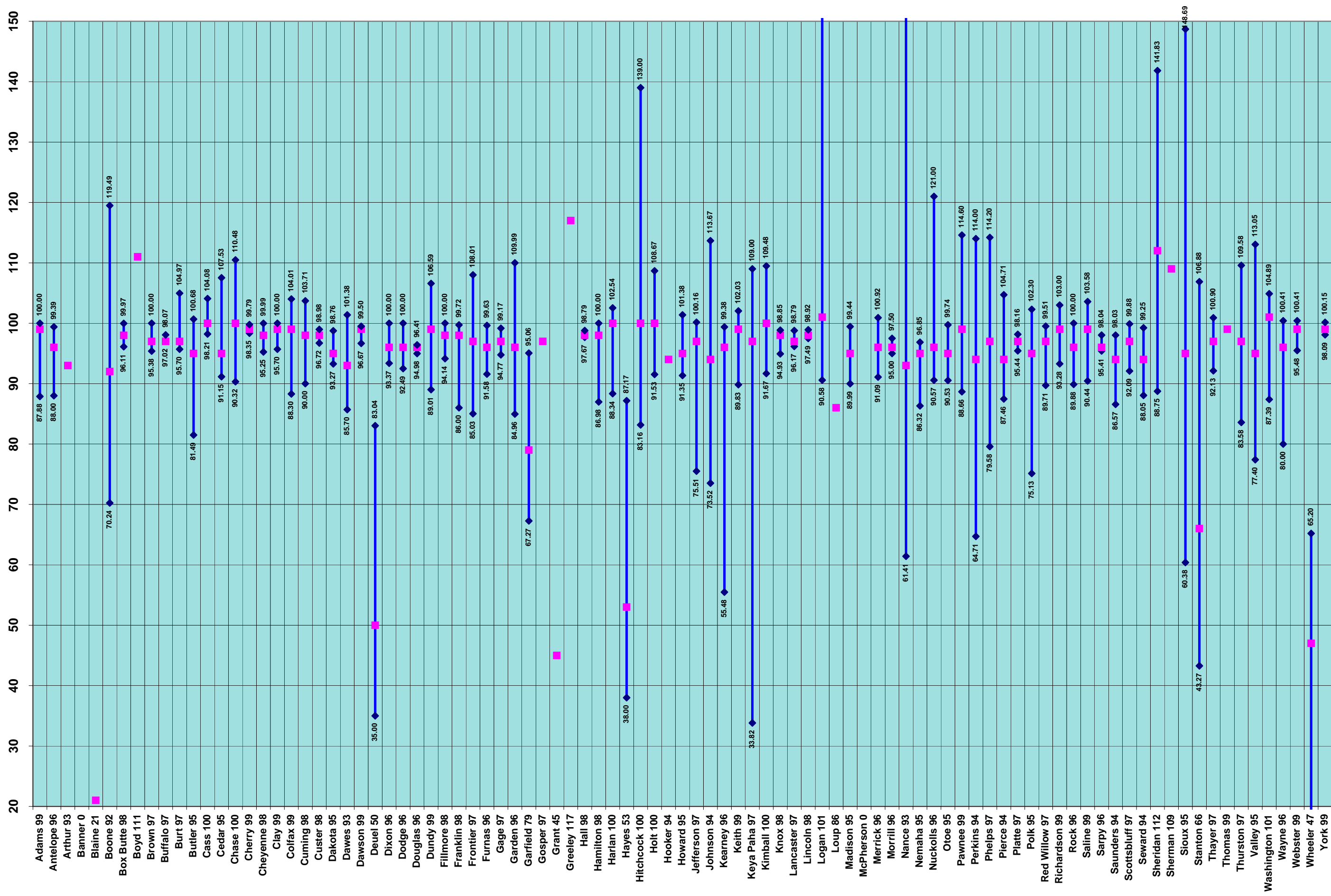
2007 Equalization Proceedings
before the
Tax Equalization and Review Commission

April 2007

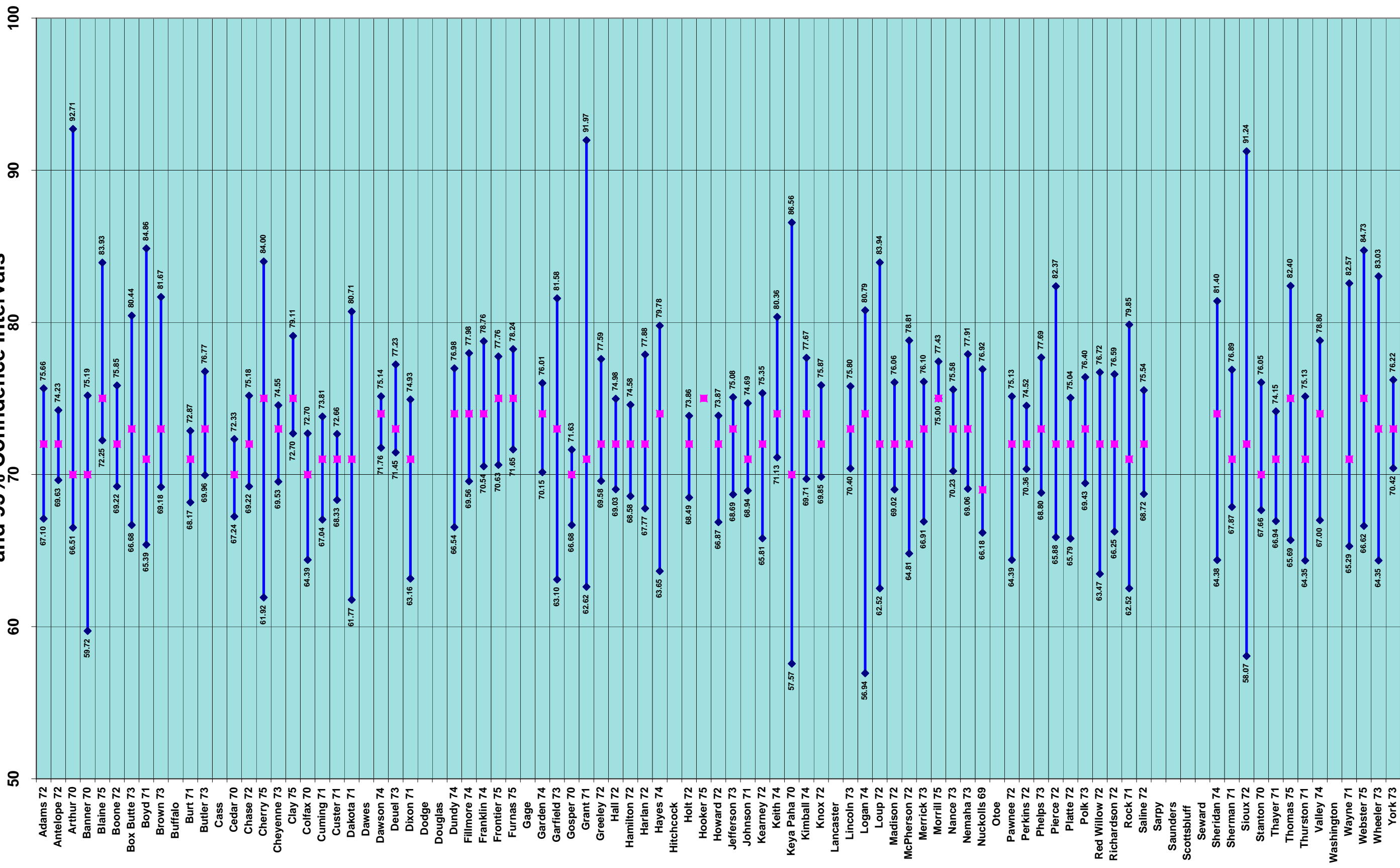
2007 Reports and Opinions Qualified Residential Medians and 95% Confidence Intervals



2007 Reports and Opinions Qualified Commercial Medians and 95% Confidence Intervals

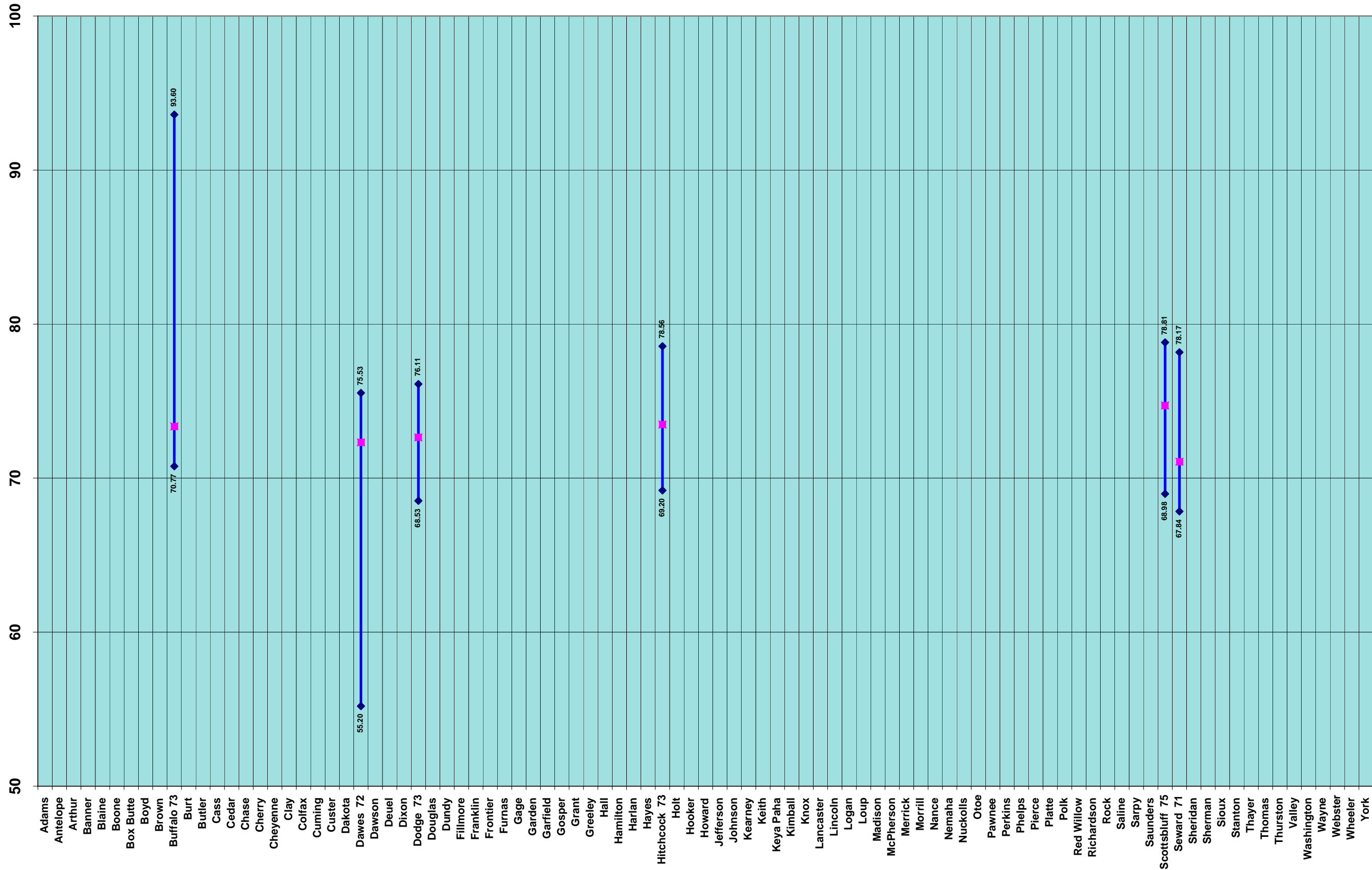


2007 Reports and Opinions Qualified Unimproved Agricultural Medians and 95% Confidence Intervals



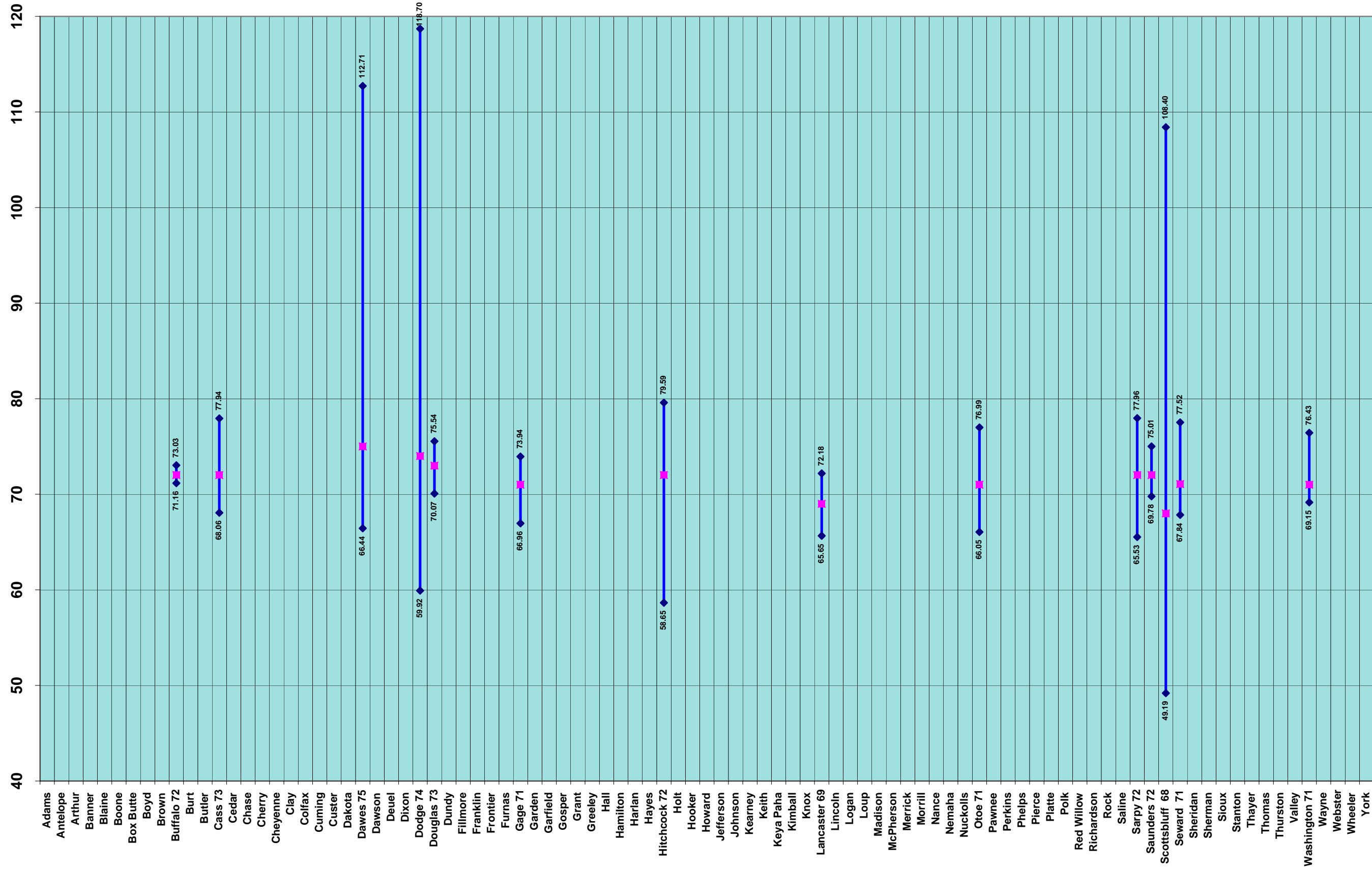
2007 Reports and Opinions Uninfluenced Qualified Unimproved Agricultural Medians

and 95% Confidence Intervals

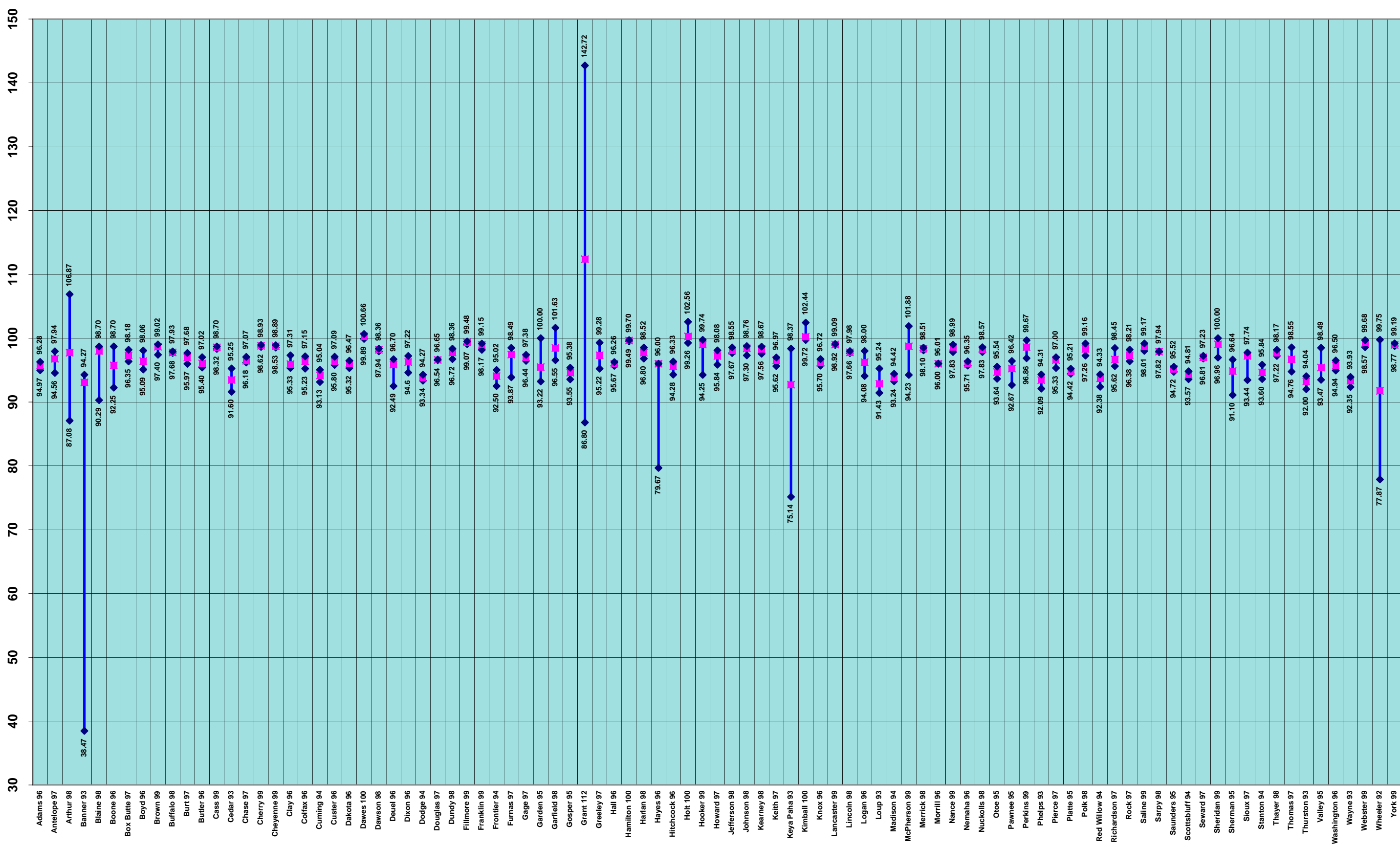


2007 Reports and Opinions Influenced Qualified Unimproved Agricultural Medians

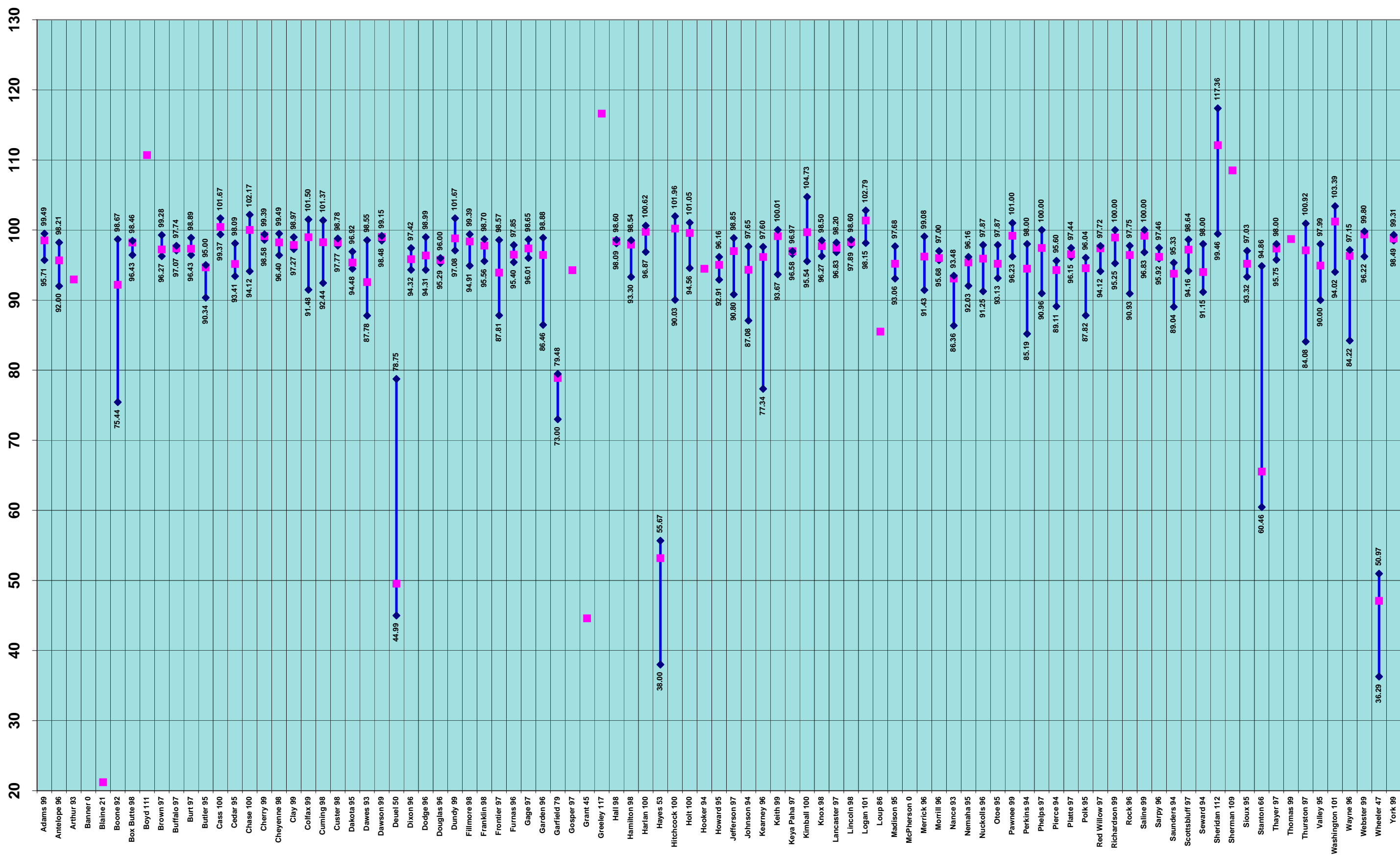
and 95% Confidence Intervals



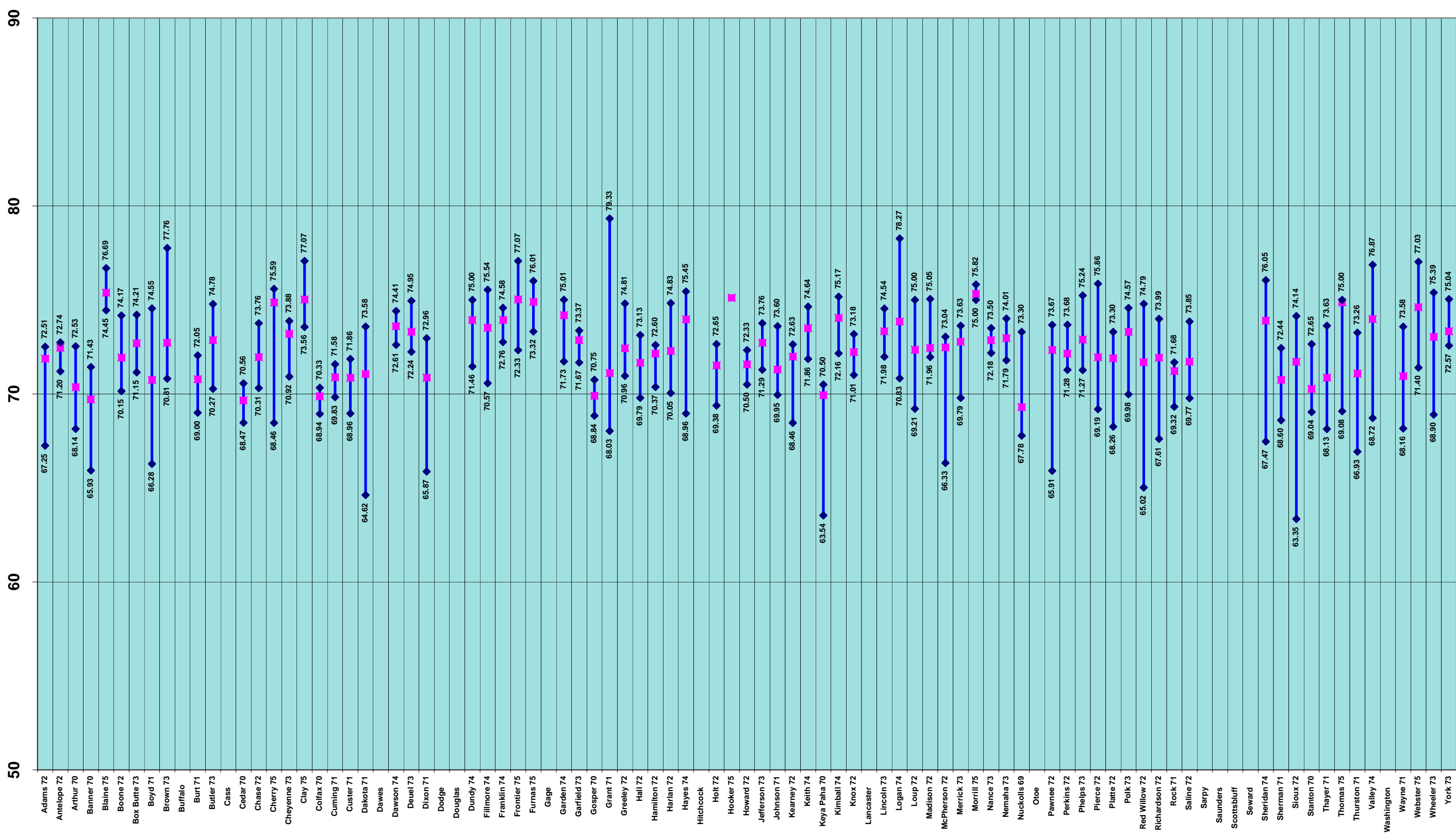
2007 Reports and Opinions Qualified Residential Medians and 70% Confidence Intervals



2007 Reports and Opinions Qualified Commercial Medians and 70% Confidence Intervals

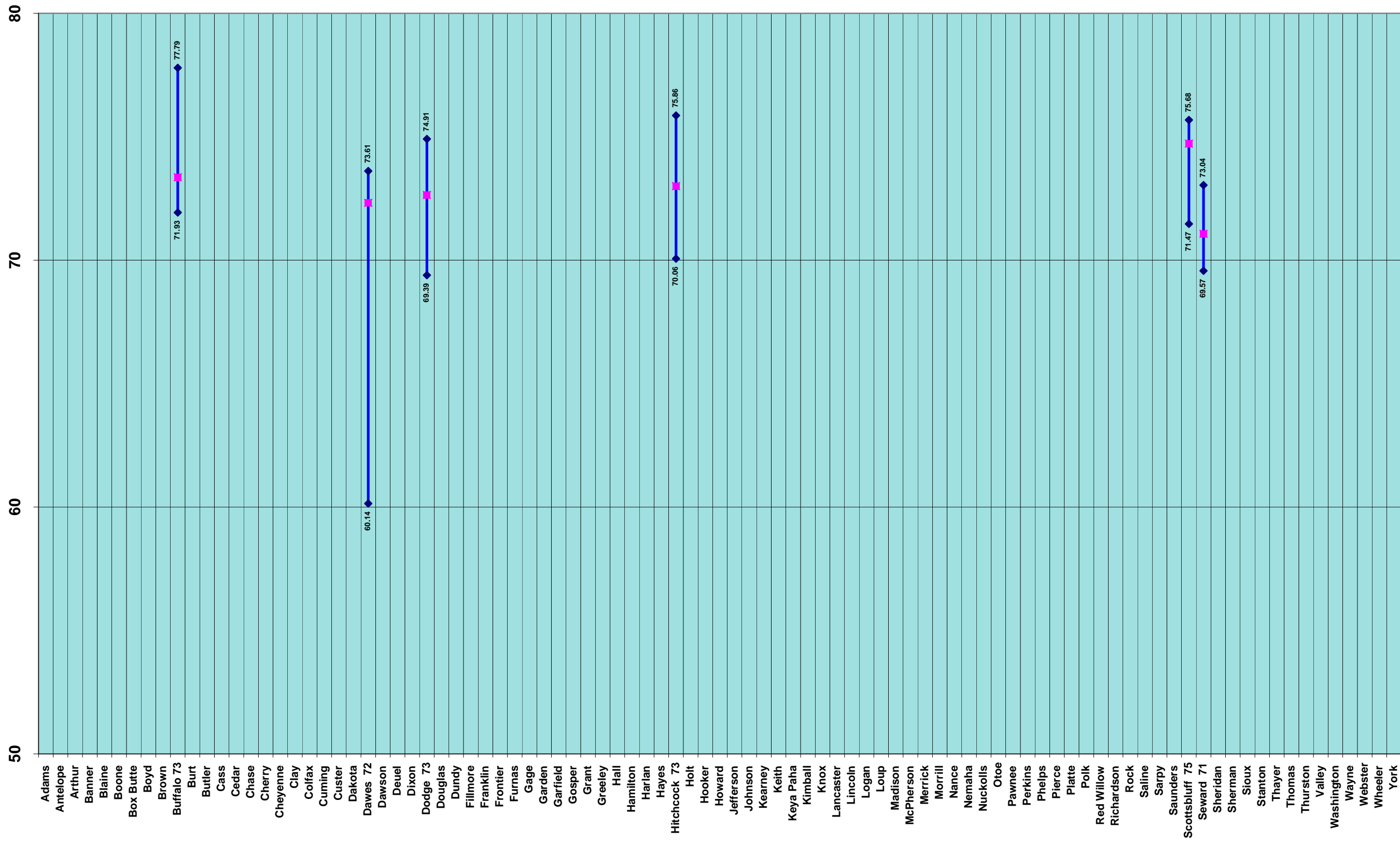


2007 Reports and Opinions Qualified Unimproved Agricultural Medians and 70% Confidence Intervals



2007 Reports and Opinions Uninfluenced Qualified Unimproved Agricultural Medians

and 70% Confidence Intervals



2007 Reports and Opinions Influenced Qualified Unimproved Agricultural Medians and 70% Confidence Intervals

